



**9 Gordon Road, Windsor, SL4 3RG**  
**£595,000**

 **HORLER**

## 9 Gordon Road, Windsor, SL4 3RG

Located in the charming Gordon Road, Windsor, this delightful four-bedroom period property offers a perfect blend of character and modern living. Ideally situated close to local amenities, schools, and excellent transport links, this home is perfect for families and professionals alike. With a beautiful south facing rear garden, this property is a rare find. combining period charm with modern convenience in a sought after location.

Do not miss the opportunity to make this wonderful house your new home - call today on 01753 621234 to arrange a viewing.



## Property Summary

Located in the charming Gordon Road, Windsor, this delightful four-bedroom period property offers a perfect blend of character and modern living. Ideally situated close to local amenities, schools, and excellent transport links, this home is perfect for families and professionals alike.

Upon entering, you are welcomed into a spacious open-plan living and dining room, featuring a striking fireplace and elegant wood flooring that adds warmth and charm. The well-appointed kitchen with skylight windows boasts a range of eye and base level units, complemented by stunning marble worktops and integral SMEG appliances, making it a joy for any culinary enthusiast. French doors lead you to a beautifully manicured south-facing rear garden, where you can enjoy the outdoors in a serene setting. A convenient washroom completes the ground floor.

The first floor comprises a comfortable double bedroom, a single bedroom currently utilised as an office, and a family bathroom, providing ample space for relaxation and privacy. Ascending to the top floor, you will find another double bedroom with useful under-eave storage, a shower room, and a single bedroom that serves as a dressing room, offering flexibility for your lifestyle needs.

The south-facing rear garden is a true highlight, featuring a lovely patio area, mature shrubs, astro turf lawn and an outbuilding for additional storage, making it an ideal space for entertaining or simply unwinding in the sun.

This property is a rare find, combining period charm with modern conveniences in a sought-after location. Do not miss the opportunity to make this wonderful house your new home.

## General Information

Council Tax Band 'D'

## Legal Note

\*\*\*Although these particulars are thought to be materially correct their accuracy cannot be guaranteed and they do not form part of any contract\*\*\*





# Gordon Road SL4

Approximate Gross Internal Floor Area = 104.2 sq m / 1122 sq ft

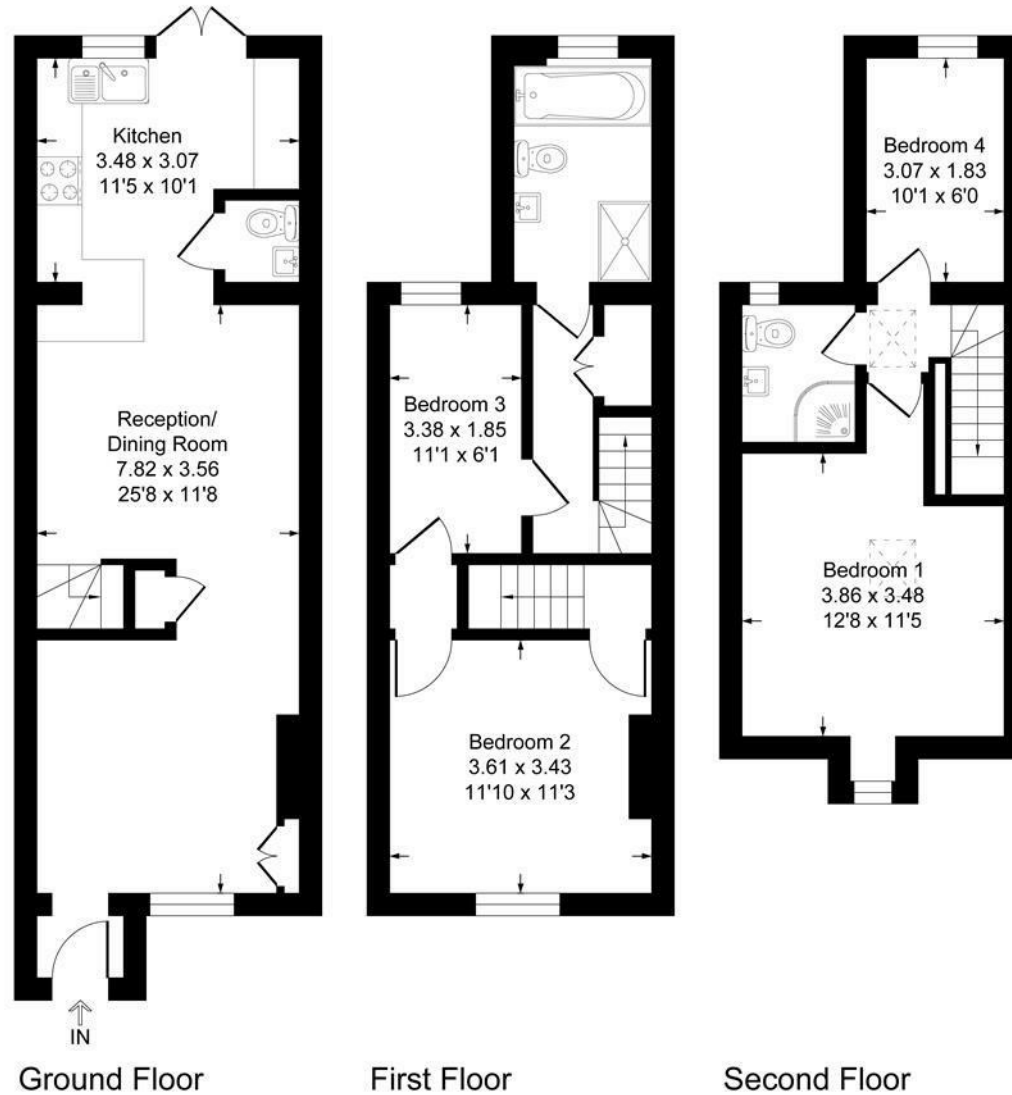


Illustration for identification purposes only, measurements are approximate, not to scale.  
Produced By Esjay Property Marketing