



I End Farm Water Lane

Sherington MK16 9NT

FINE & COUNTRY

I End Farm Water Lane

Sherington MK16 9NT

Located in an idyllic rural location and having half an acre of garden, this stone built barn conversion is surrounded by open countryside though in close proximity to the village amenities. The conversion works have been carried out tastefully and sympathetically to produce an exceptional home with a feeling of character and exuding a warm comforting ambience.

A distinct benefit is the availability of parking which can accommodate up to four cars immediately adjacent to the property. The accommodation comprises: Entrance hall, Cloakroom, Sitting room, Family room converted from a former garage Kitchen/dining room, Master bedroom with an en suite bathroom, Three further bedrooms, Family bathroom. The property has underfloor heating throughout and approximately half an acre of garden.

Property walk through

At the end of a country lane where farmers fields border the verges, a walled entrance opens to a brick paviour driveway where parking is available for 4 vehicles. A glazed doorway opens into a spacious hallway with exposed stonework and beams. The hallway flooring is tiled and the staircase rises from this area to the first floor. A cloakroom is accessed from the hallway, again with exposed stonework to the walls and contains a wash basin in a tile surround and WC. From the hallway double doors open to a generously proportioned sitting room with a vaulted ceiling and gaining a welcoming flow of natural light from three aspects. Exposed stonework, visible roof trusses and a wood burning stove create a rustic feel to this lovely room.

The kitchen/dining room is the ideal place for families to congregate or for entertaining friends. Extremely spacious, with a shaker style kitchen to emphasise the cottage like feel of the property. There is an excellent range of kitchen cabinets at base and high levels with a central island unit providing additional storage under beech work surfaces with pendant lighting over. The island unit is also designed for use as a breakfast bar. Housings are available for a "Range" cooker and American style fridge freezer. The dining area offers more than ample space for a large table and chairs. Adjacent to the kitchen is a family room. This is a room of multiple use which can be used as a snug space to enjoy peace and quiet, children's playroom or hobby room.

On the first floor the master bedroom has fitted wardrobes and a bathroom en suite. A great delight is its' French balcony with its never ending vista over green fields and rolling countryside. There are three further bedrooms on this floor and the family bathroom. The family bathroom has a four piece suite with panelled bath, glazed shower cubicle, wash basin and WC.





External description

Located at the end of a private no through road the property has off street parking for several vehicles. Immediately adjacent to the property is a wrap around paved courtyard protected and secluded by attractive stone walling. Garden land approaching 0.5 acres is accessed over a gravelled driveway with fenced and enclosed boundaries. Power and water is fed to this area of garden.

Agents notes

Primarily Underfloor heating on the ground floor.

Oil fired boiler

Mains water and electricity

No gas available

Septic tank

Local authority Milton Keynes Council

Council tax band "F"

Disclaimer

Whilst we endeavour to make our sales particulars accurate and reliable, if there is any point which is of particular importance to you please contact the office and we will be pleased to verify the information for you. Do so, particularly if contemplating travelling some distance to view the property. The mention of any appliance and/or services to this property does not imply that they are in full and efficient working order, and their condition is unknown to us. Unless fixtures and fittings are specifically mentioned in these details, they are not included in the asking price. Some items may be available subject to negotiation with the Vendor.

Notice to purchasers

In order that we meet legal obligations, should a purchaser have an offer accepted on any property marketed by us they will be required to undertake a digital identification check. We use a specialist third party service to do this. There will be a non refundable charge of £18 (£15+VAT) per person, per purchase, for this service.

Buyers will also be asked to provide full proof off, and source of, funds - full details of acceptable proof need to be provided upon receipt of your offer.

We may recommend services to clients, to include financial services and solicitor recommendations, for which we may receive a referral fee, typically between £0 and £200.









Approximate Gross Internal Area
 Ground Floor = 112.1 sq m / 1,207 sq ft
 First Floor = 63.6 sq m / 684 sq ft
 Total = 175.7 sq m / 1,891 sq ft

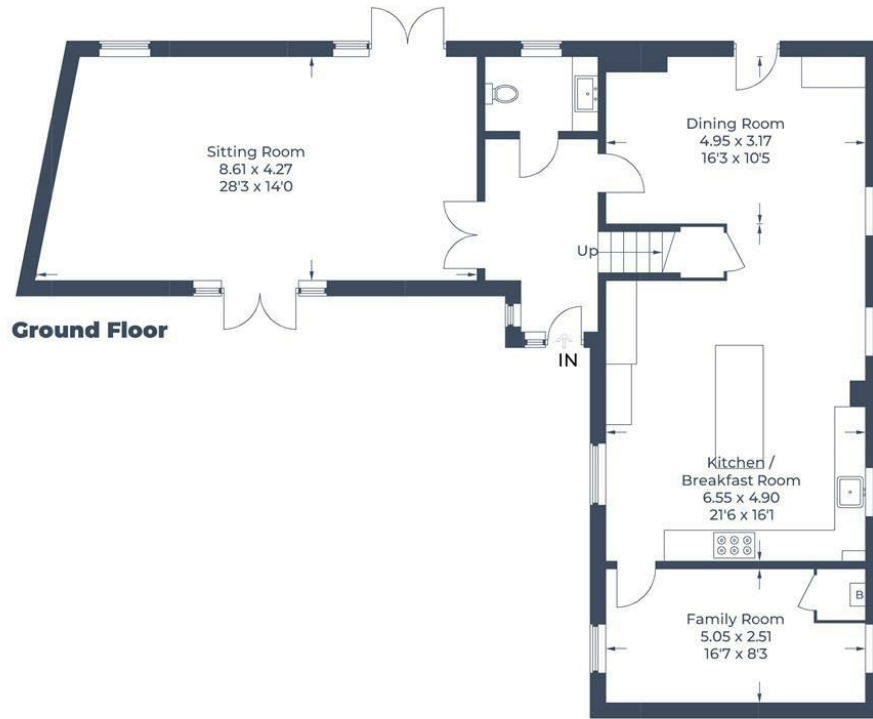


Illustration for identification purposes only,
 measurements are approximate, not to scale.
 © CJ Property Marketing Produced for Fine Country

Energy Efficiency Rating		Environmental Impact (CO ₂) Rating			
Very energy efficient - lower running costs	Current	Potential	Very environmentally friendly - lower CO ₂ emissions	Current	Potential
(92 plus) A			(92 plus) A		
(81-91) B			(81-91) B		
(69-80) C			(69-80) C		
(55-68) D			(55-68) D		
(39-54) E			(39-54) E		
(21-38) F			(21-38) F		
(1-20) G			(1-20) G		
Not energy efficient - higher running costs		Not environmentally friendly - higher CO ₂ emissions			
England & Wales		EU Directive 2002/91/EC	England & Wales		EU Directive 2002/91/EC



1 Silver End, Olney,
 Bucks MK46 4AL
 01234 975999 olney@fineandcountry.com
 www.fineandcountry.co.uk

These particulars, whilst believed to be accurate are set out as a general outline only for guidance and do not constitute any part of an offer or contract. Intending purchasers should not rely on them as statements or representation of fact, but must satisfy themselves by inspection or otherwise as to their accuracy. We have not carried out a detailed survey nor tested the services, appliances and specific fittings. Room sizes should not be relied upon for carpets and furnishings. The measurements given are approximate. No person in this firm's employment has the authority to make or give any representation or warranty in respect of the property.