



6 Bath Terrace

ST4 7QN

By Auction £135,000



3



1



1

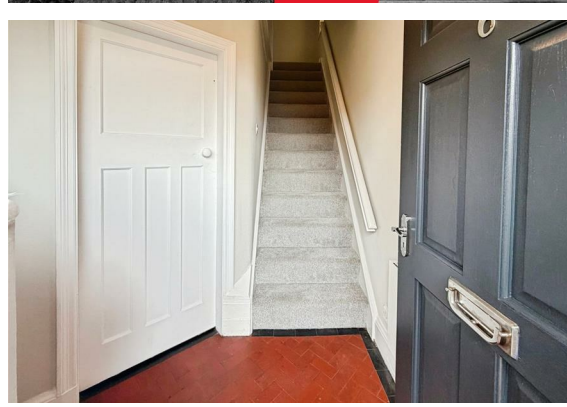
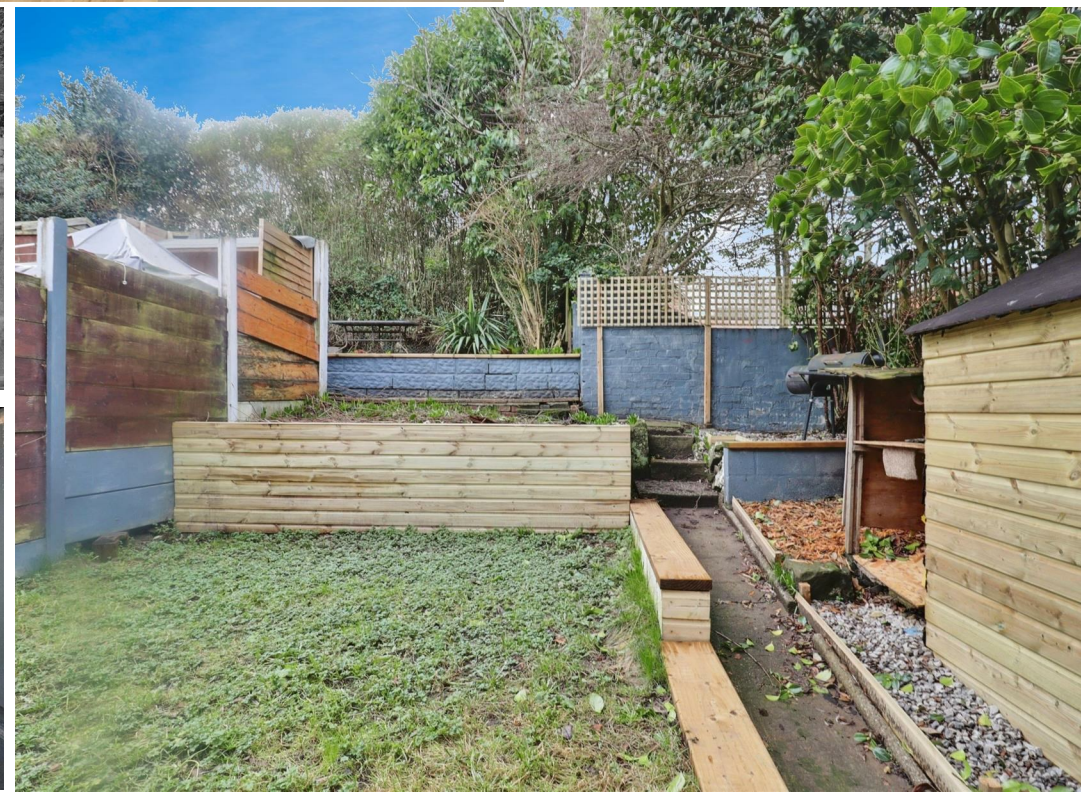


E



STEPHENSON BROWNE

Auction Property – Chain Free! This beautifully refurbished three-bedroom semi-detached home on the borders of Penkhull is offered chain free and ready to move straight into. Retaining character features including original Minton tiled flooring, the property boasts a bright bay-fronted living room with feature fireplace, a modern fitted kitchen with integrated appliances, utility room, pantry storage and ground-floor W.C. Upstairs are two generous double bedrooms, a versatile third bedroom/study, and a contemporary family bathroom. Externally, the landscaped tiered rear garden offers a private, non-overlooked outdoor space with side access, while permit on-street parking is available to the front. Ideally located close to Stoke-on-Trent railway station, Royal Stoke University Hospital and the M6, the property provides excellent commuter links. Offered via the Modern Method of Auction, with completion within a 56-day Reservation Period. Buyers must review the Buyer Information Pack prior to bidding and will be required to pay a non-refundable Reservation Fee of 4.5% of the purchase price (including VAT), subject to a minimum of £6,600 (including VAT), in addition to the purchase price. Optional services may be recommended by the Agent/Auctioneer, who may receive a commission of up to £960 (including VAT) if these services are used.



Ground Floor

Entrance Hall

Living Room

13'8" x 13'9"

Kitchen

10'5" x 13'8"

W.C.

2'8" x 4'4"

Pantry/ Utility Room

2'11" x 6'8"

Utility Room

2'8" x 5'11"

First Floor

Bedroom One

10'6" x 10'9"

Bedroom Two

10'9" x 11'4"

Bathroom

6'2" x 5'10"

Bedroom Three

5'11" x 7'5"

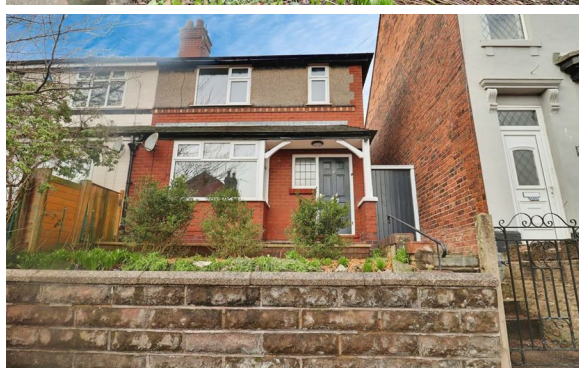
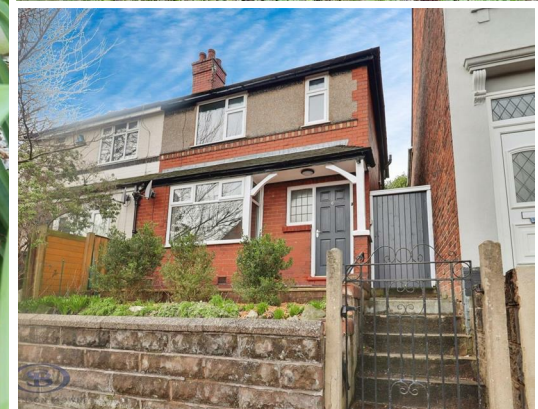
Stephenson Browne AML Disclosure

Agents are required by law to conduct Anti-Money Laundering checks on all those buying a property. Stephenson Browne charge £49.99 plus VAT for an AML check per purchase transaction. This is a non-refundable fee. The charges cover the cost of obtaining relevant data, any manual checks that are required, and ongoing monitoring. This fee is payable in advance prior to the issuing of a memorandum of sale on the property you are seeking to buy.



- FULL RENNOVATED AND READY TO MOVE INTO WITH NO CHAIN!
- Close to schools and local amenities
- Modern fitted kitchen with integrated appliances and ample storage
- Entrance hall with original Minton tiled flooring
- Bright bay-fronted living room with feature fireplace
- Close to commuter links
- Ground floor W.C., pantry/understairs storage, and utility room
- Generous tiered rear garden with side-gate access, private and versatile
- Modern family bathroom with shower over the bath
- On-street parking, new carpets and flooring, sought-after location

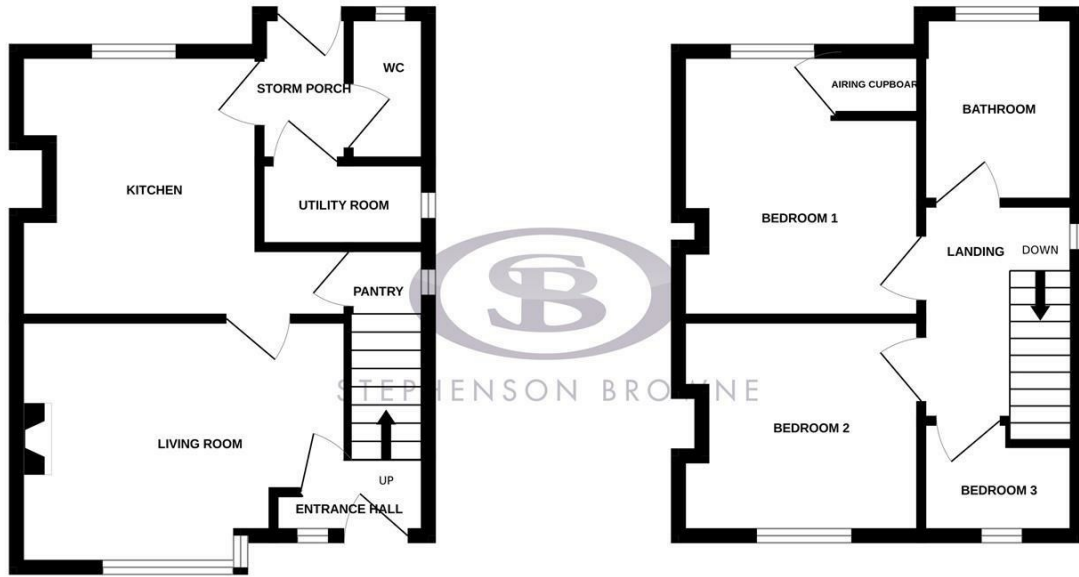




Floor Plan

GROUND FLOOR

1ST FLOOR



Whilst every attempt has been made to ensure the accuracy of the floorplan contained here, measurements of doors, windows, rooms and any other items are approximate and no responsibility is taken for any error, omission or mis-statement. This plan is for illustrative purposes only and should be used as such by any prospective purchaser. The services, systems and appliances shown have not been tested and no guarantee as to their operability or efficiency can be given.
Made with Metropix ©2026

Area Map



Energy Efficiency Rating		Current	Potential
Very energy efficient - lower running costs			
(92 plus) A			
(81-91) B			
(69-80) C			
(55-68) D			
(39-54) E			
(21-38) F			
(1-20) G			
Not energy efficient - higher running costs			
England & Wales		EU Directive 2002/91/EC	83

Environmental Impact (CO ₂) Rating		Current	Potential
Very environmentally friendly - lower CO ₂ emissions			
(92 plus) A			
(81-91) B			
(69-80) C			
(55-68) D			
(39-54) E			
(21-38) F			
(1-20) G			
Not environmentally friendly - higher CO ₂ emissions			
England & Wales		EU Directive 2002/91/EC	

Viewing

Please contact our Newcastle-Under-Lyme Office on 01782 625734 if you would like to arrange a viewing appointment or require any further information.

NOTICE: Stephenson Browne for themselves and for the vendors or lessors of this property whose agents they are give note that: (1) the particulars are set out as a general guideline only for the guidance of intending purchasers or lessees. and do not constitute, nor constitute part of, an offer or contract; (2) all descriptions, dimensions, references to condition and necessary permissions for use and occupation, and other details are given in good faith and are believed to be correct but any intending purchasers or tenants should not rely on them as statements or representations of fact but must satisfy themselves by inspection or otherwise as to be the correctness of each theme; (3) no person in the employment of Stephenson Browne has any authority to make representation or warranty in relation to this property; (4) fixtures and fittings are subject to a formal list supplied by the vendors solicitor. Referring to: Move with Us Ltd Average fee: £123.64

56 Merial Street, Newcastle Under Lyme, Staffordshire, ST5 2AW
Telephone: 01782 625734 Email: newcastle@stephensonbrowne.co.uk Website: www.stephensonbrowne.co.uk