



10 Salisbury Avenue Leeds



4 Bedroom House - Mid Terrace £129,995

69 Lower Wortley Road
Wortley
Leeds
West Yorkshire
LS12 4SL
Tel: 0113 231 1033
Fax: 0113 203 8333

Web Site
www.kathwells.com

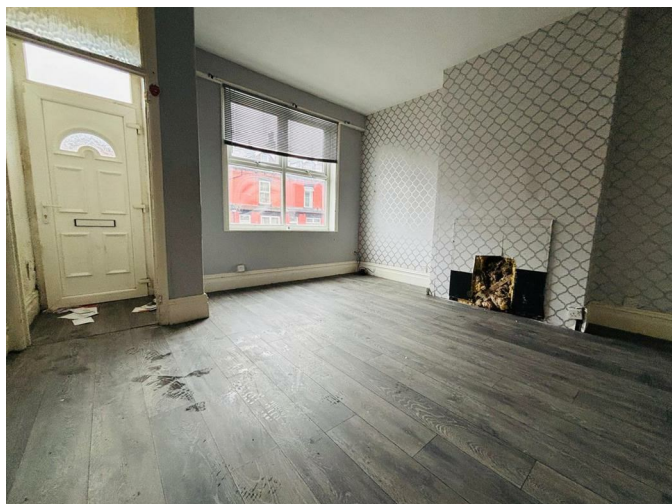
email
sales@kathwells.com

10 Salisbury Avenue, Leeds, LS12 2AR

Dining Kitchen:

GROUND FLOOR:

Living Room:



Access via a part glazed front entrance door, double glazed window, central heating radiator, television point, ample space for living room furniture

Inner Hallway:

Stairs rising to the first floor



Part glazed rear door giving access to the rear garden, double glazed window, wall drawer & base units, work surfaces, electric and gas point, inset sink & drainer, ample space for a fridge / freezer, plumbing for an automatic washing machine, access to the cellar, ample space for a dining table & chairs

Cellars:

There are two dry keeping cellars providing a useful storage space and has a door giving access to the front of the property

FIRST FLOOR:

Landing:

Access to first floor accommodation, stairs rising to the second floor

Bedroom One:



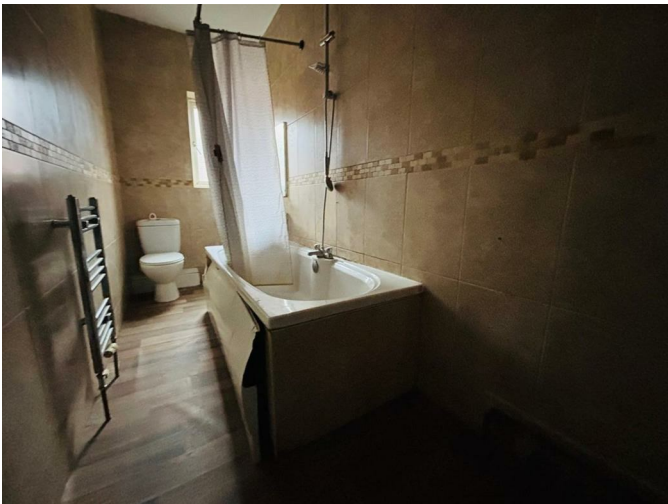
Double glazed window, central heating radiator, ample space for bedroom furniture

Bedroom Two:



Double glazed window, central heating radiator

Bathroom / WC:



Double glazed window, a panelled bath with a plumbed shower above, low flush WC, wash basin, ladder style central heating radiator

SECOND FLOOR:

Landing:
Access to second floor accommodation

Bedroom Three:

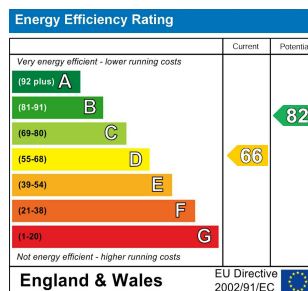


Double glazed window, central heating radiator

Bedroom Four:



Velux window, central heating radiator



Floor Plan