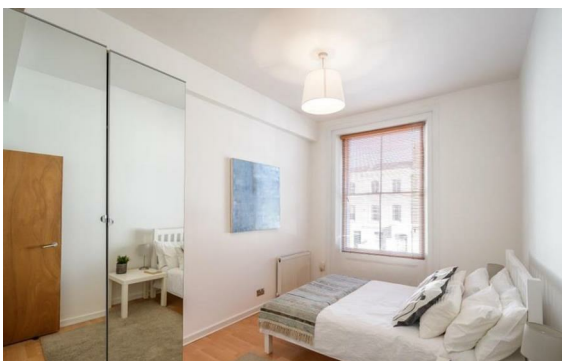


Allsop Place, Marylebone, London, NW1

Rent £850 PCM

2 Bed | 2 Bath | 1 Reception

*Please call us on 020 7724 2233 or email us [info@newingtonstates.com](mailto:info@newingtonstates.com) to book a viewing.*



A spacious and fully furnished two-bedroom apartment set within a highly sought-after building above Baker Street Station. The property features a bright reception room with a fully fitted open-plan kitchen, two generous double bedrooms with ample storage, and two modern bathrooms, including one en-suite.

Residents benefit from a 24-hour concierge service, lift access, and a secure video entry system. Ideally located, the apartment is within walking distance of Regent's Park, Oxford Street, and the charming boutiques, cafés, and restaurants of Marylebone Village.

EPC rating: D

## Energy Efficiency Rating: D

Agents Note: Whilst every care has been taken to prepare these particulars, they are for guidance purposes only. All measurements are approximate and are for general guidance purposes only and whilst every care has been taken to ensure their accuracy, they should not be relied upon and potential buyers/tenants are advised to recheck the measurements.

**NEWINGTON**  
— ESTATES —

60 Upper Montagu Street

London

W1H 1SN

020 7724 2233

[info@newingtonestates.com](mailto:info@newingtonestates.com)

<http://www.newingtonestates.com>