



**Princes Road, SW19**

**£1,800,000**

**Dexters**



## Princes Road, SW19

An opportunity to purchase this substantial five bedroom, bay-fronted, Victorian family home, located in an enviable road in the heart of Wimbledon.

The entrance hallway provides access to a double reception room on the ground floor, leading through to an expansive open plan kitchen/dining/reception room with bi-folding doors to the rear garden. There is also a ground floor w/c and shower room. The first floor provides four good sized bedrooms, one with en-suite bathroom, and a separate family bathroom. The second floor is a converted loft space acting as a further double bedroom with potential for further expansion.

The property has an abundance of character having retained many original features and has high ceilings, original cornice, beech flooring and bay-fronted windows to the front. The rear of the property opens on to a low-maintenance garden laid to wooden decking and artificial grass with shrub borders, complete with olive trees and a playhouse. The front providing off street parking. There is great potential for further development in the rear attic, subject to relevant planning.

Princes Road is a quiet street located just off The Broadway with Wimbledon district line tube, overground station and its huge range of high street brand shops, delicious restaurants and vibrant bars

### Features

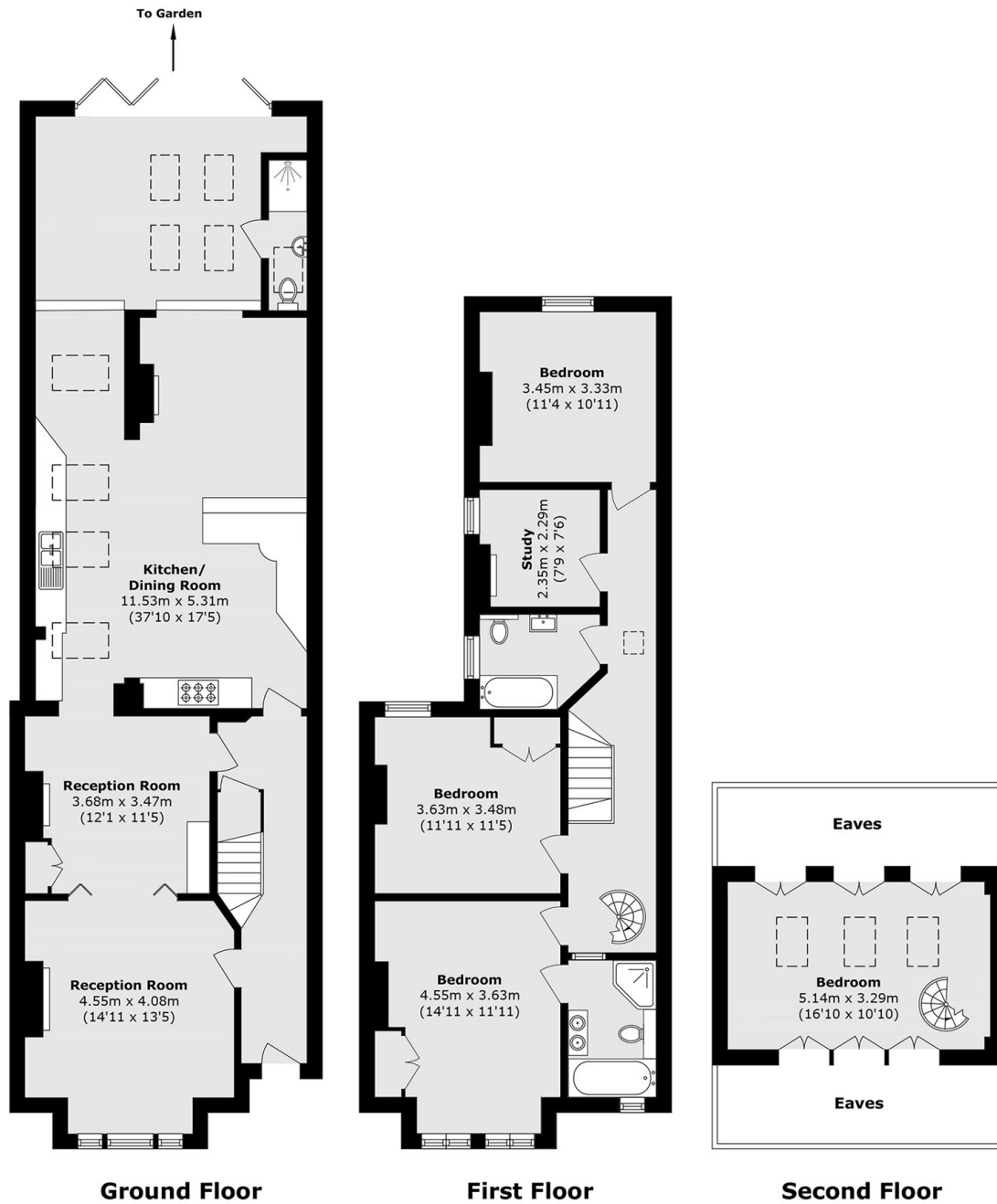
- Victorian Family Home
- Five Bedrooms
- South Facing Garden
- Off-Street Parking
- Potential to Extend S.T.P.P
- No Forward Chain







# Princes Road, London, SW19



Total area (approx.): 191.7 sq. m (2063.4 sq. ft)  
(Excluding Eaves)