



Hurford's

Lonsdale Road, Stamford Freehold Guide Price £310,000

Key Features



- Sale by Modern Auction (T&Cs apply)
- Subject to an undisclosed Reserve Price
- Buyers fees apply
- Well proportioned detached family home
- Sought after Stamford location near Rugby Club

Lonsdale Road is a solidly constructed, well maintained detached home occupying a generous plot within one of Stamford's most established and popular residential areas. Set back from the road, the property is approached via a private driveway providing off road parking and access to a single garage, with a lawned front garden and mature planting enhancing kerb appeal.

Internally, the accommodation is arranged over two floors and offers balanced, practical living space, now ready for a new owner to modernise and personalise. The ground floor comprises a spacious front facing living room, enjoying plenty of natural light through a large window and offering ample space for family seating. Glazed double



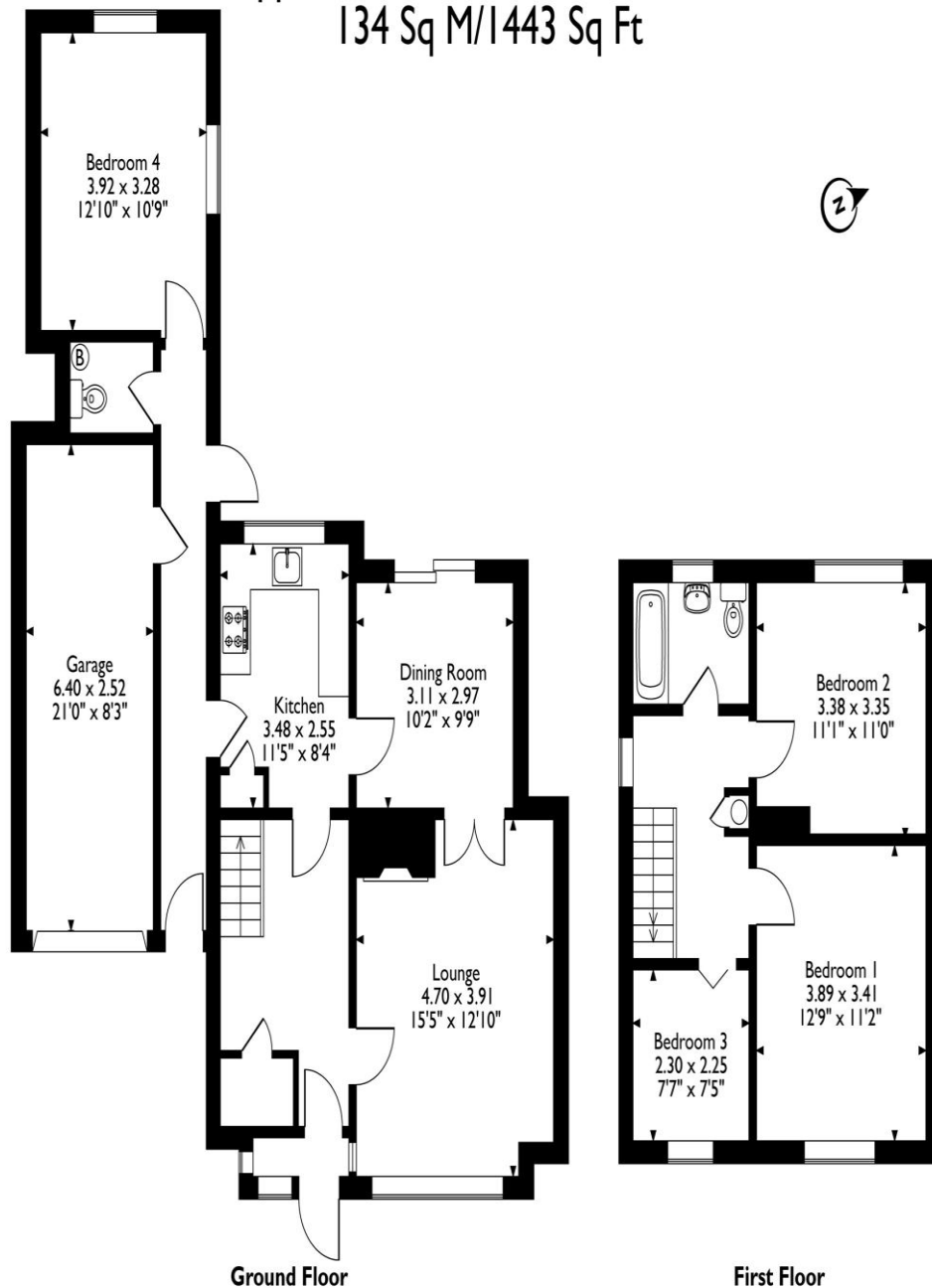
doors lead through to a separate dining room positioned at the rear of the property, which enjoys views over the garden and provides an excellent space for entertaining and family meals.

The kitchen is fitted with a range of units and work surfaces, with space for appliances and access to both the dining room and an inner corridor leading to the garage and a useful office/storage area. The layout offers clear potential for reconfiguration to create a more open plan kitchen dining family space if desired. A ground floor WC completes the downstairs accommodation.

To the first floor, there are three well proportioned bedrooms, two of which are comfortable doubles, with the third making an ideal child's bedroom, guest room, or home office. The family bathroom is fitted with a three piece suite with shower over the bath. Externally, the rear garden is a standout feature, offering a good degree of privacy and a pleasant westerly aspect. Laid mainly to lawn with established borders and mature planting, the garden also benefits from a paved patio area directly behind the house, ideal for outdoor seating and entertaining.



107, Lonsdale Road, Stamford, Lincolnshire
Approximate Gross Internal Area
134 Sq M/1443 Sq Ft




Please note that the location of doors, windows and other items are approximate and this floorplan is to be used for illustrative purposes only. Unauthorized reproduction is prohibited.

Lonsdale Road is a highly regarded location, well placed for Stamford Rugby Club, excellent local schools, neighbourhood shops, and Stamford's historic town centre. The A1 is also easily accessible, making the property particularly appealing for commuters.

This is a superb opportunity for buyers seeking a detached home with space, potential, and a prime Stamford position. Early viewing is highly recommended.

Selling your property?

Contact us to arrange a FREE home valuation.

 01780 752136

 38 St. Marys Street, STAMFORD, Lincolnshire, PE9 2DS

 stamford@hurfords.co.uk

 www.hurfords.co.uk



 SCAN ME



Hurfords is a trading name of Sharman Quinney Holdings Limited which is registered in England and Wales under company number 4174227, Registered Office is Cumbria House, 16-20 Hockliffe Street, Leighton Buzzard, Bedfordshire, LU7 1GN. VAT Registration Number is 500 2481 05.

1: These particulars do not constitute part or all of an offer or contract. 2: The measurements indicated are supplied for guidance only and as such must be considered incorrect. 3: Potential buyers are advised to recheck the measurements before committing to any expense. 4: Hurfords has not tested any apparatus, equipment, fixtures, fittings or services and it is the buyers interests to check the working condition of any appliances. 5: Hurfords has not sought to verify the legal title of the property and buyers must obtain verification from their legal representative. 6: Intending purchasers will be asked to produce identification documentation at a later stage and we would ask your co-operation in order that there will be no delay in agreeing the sale. Ref: SFD204261 - 0003

