



WETHERELL
MAYFAIR'S FINEST PROPERTIES



Hertford Street, W1J

£4,008 PCM

A two bedroom apartment on the fifth floor of this popular art-deco building with porter and lift. With two similar sized double bedrooms, this apartment is suitable for a couple looking for a spare bedroom or two sharing professionals.

Situated on the fifth floor, this two double bedroom apartment comprises of floor to ceiling wardrobes and large windows with light through the property.

The large reception room is perfect for entertaining guests with a separate kitchen with fitted appliances and two bathrooms ideal for guests or for two sharing professionals.

The property has added benefits of a 24 hour porter, lift access and heating and hot water included within the rental price.

Within the vibrant area of Shepherds Market this building is to the east side of Hertford Street, close to Green Park underground station.

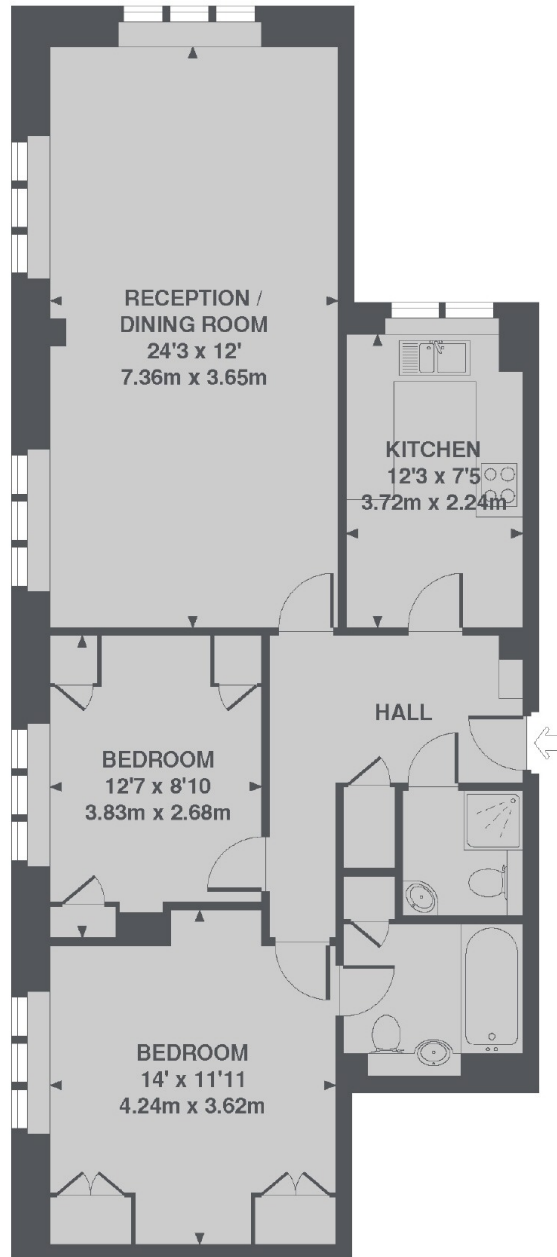


FEATURES

- Two Double Bedrooms • Two Bathrooms • Separate Kitchen • Lift Access • Porter • Excellent Location •



Hertford Street,
London, W1J



5TH FLOOR

TOTAL APPROX. FLOOR AREA 833 SQ. FT. (77.4 SQ. M.)