



Oakleigh Park North, Oakleigh Park, N20 9AQ
£559,995 Leasehold - Share of Freehold Council Tax Band G

REAL ESTATES
Est.1981

Estate Agents · Residential Sales · Investments · Lettings

Real Estates are delighted to present this spacious and well-maintained two-bedroom, second-floor apartment measuring 1115 sq ft situated within a desirable development, complete with lift access and gated allocated parking. The property is offered chain free and includes a share of the freehold.

The accommodation comprises a large entrance hall, a bright reception room with Juliet balcony, and a eat-in kitchen. The principal bedroom benefits from an en-suite shower room, while the second bedroom is served by a modern three-piece family bathroom. Ample storage cupboards can be found throughout the property.

Ideally located, this apartment is well placed for Oakleigh Park mainline station, Totteridge & Whetstone Underground Station, and the excellent amenities of Whetstone High Road, including Waitrose, M&S, Boots, and a selection of popular cafés and bars.

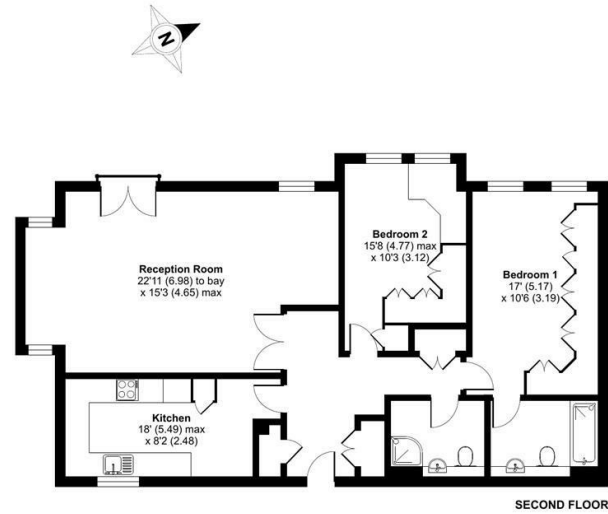
For further information or to arrange a viewing, please contact our Totteridge office.





Oakleigh Park North, London, N20

Approximate Area = 1115 sq ft / 103.6 sq m
For identification only - Not to scale



Floor plan produced in accordance with RICS Property Measurement 2nd Edition, incorporating International Property Measurement Standards (IPMS2 Residential). © richcom 2025. Produced for Real Estates. REF: 1374000

Energy Efficiency Rating		
Very energy efficient - lower running costs	Current	Potential
A (91-100)		
B (81-90)		
C (69-80)	74	80
D (55-68)		
E (39-54)		
F (21-38)		
G (1-20)		
Not energy efficient - higher running costs		
EU Directive		



Real EstatesTotteridge Office:
32 Totteridge Lane
Totteridge N20 9QJ

ll : 0208 445 3132
e : info@realestates-wsp.co.uk
w : www.realestates-wsp.co.uk