



Southmead Terrace, Crewkerne TA18 8DN

welcome to

Southmead Terrace, Crewkerne

A great opportunity to purchase this mid terraced house, offered for sale with the benefit of NO ONWARD CHAIN! The accommodation briefly comprises entrance hall, cloakroom, living room, dining room, kitchen, three bedrooms and bathroom. Outside there is a garden with useful storage shed.



Ground Floor

Entrance Hall

Double glazed door to front. Door to WC. Doors to kitchen and living room. Stairs rising to first floor. Fitted carpet. Telephone point.

Cloakroom

Front aspect double glazed window. Fitted with a WC. Part tiled.

Living Room

13' 5" x 11' 8" (4.09m x 3.56m)
Front aspect double glazed window. Fitted carpet. Plug-in electric fire. Open to dining room. TV point.

Dining Room

10' 8" x 7' 11" (3.25m x 2.41m)
Rear aspect double glazed window. Fitted carpet.

Kitchen

11' 5" x 9' 11" (3.48m x 3.02m)
Rear aspect double glazed window. Double glazed door to rear. Fitted base and wall units. Work surfaces incorporating a stainless steel sink and drainer. Tiled splashbacks. Space for electric cooker. Space for freestanding fridge/freezer. Space for washing machine. Open to dining room. Door to hallway.

First Floor

Landing

Stairs from entrance hall. Access to loft. Fitted carpet.

Bedroom One

13' 5" x 9' 6" (4.09m x 2.90m)
Front aspect double glazed windows. Fitted carpet.

Bedroom Two

11' 7" x 10' 7" (3.53m x 3.23m)
Rear aspect double glazed windows. Fitted carpet. TV point.

Bedroom Three

9' 7" x 8' 5" (2.92m x 2.57m)
Front aspect double glazed window. Fitted carpet. Cupboard housing water tank.

Bathroom

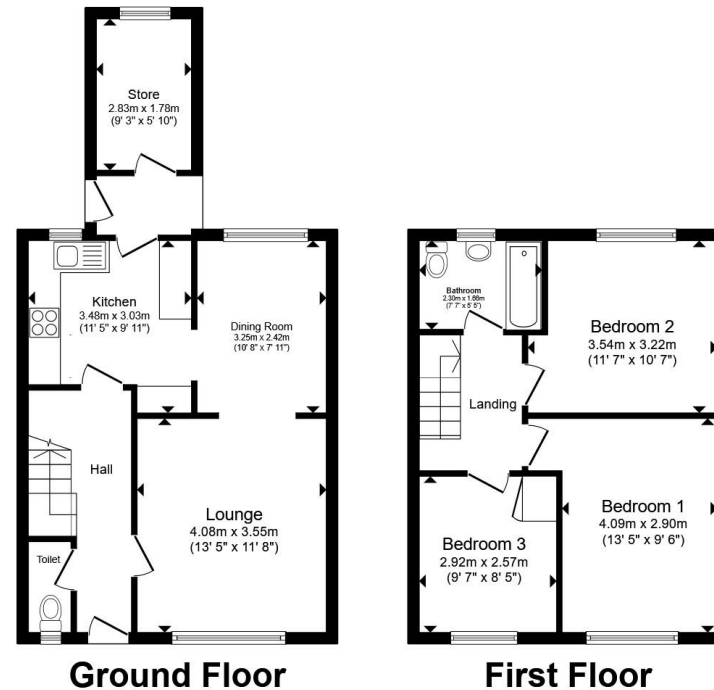
7' 7" x 5' 5" (2.31m x 1.65m)
Front aspect single glazed window. Rear aspect double glazed window. Fitted with a suite comprising a panelled bath with mixer taps and shower over, wash hand basin and WC. Part tiled.

Outside

At the front of the house the garden is planted with beds of mature shrubs. The rear garden is laid to patio with a raised flower bed.

Outbuilding

9' 3" x 5' 10" (2.82m x 1.78m)
Single glazed window to rear.



Total floor area 88.9 m² (957 sq.ft.) approx

This floor plan is for illustrative purposes only. It is not drawn to scale. Any measurements, floor areas (including any total floor area), openings and orientation are approximate. No details are guaranteed, they cannot be relied upon for any purpose and they do not form part of any agreement. No liability is taken for any error, omission or misstatement. A party must rely upon its own inspection(s). Powered by www.propertybox.io


fox & sons



view this property online fox-and-sons.co.uk/Property/CRK106416



welcome to

Southmead Terrace, Crewkerne

- Mid Terrace House
- Three Bedrooms
- Living Room and Dining Room
- Rear Garden
- NO ONWARD CHAIN!

Tenure: Freehold EPC Rating: E
Council Tax Band: B

£180,000



Please note the marker reflects the
postcode not the actual property

view this property online fox-and-sons.co.uk/Property/CRK106416



Property Ref:
CRK106416 - 0003

1. MONEY LAUNDERING REGULATIONS Intending purchasers will be asked to produce identification documentation at a later stage and we would ask for your co-operation in order that there is no delay in agreeing the sale. 2. These particulars do not constitute part or all of an offer or contract. 3. The measurements indicated are supplied for guidance only and as such must be considered incorrect. Potential buyers are advised to recheck measurements before committing to any expense. 4. We have not tested any apparatus, equipment, fixtures or services and it is in the buyers interest to check the working condition of any appliances. 5. Where an EPC, or a Home Report (Scotland only) is held for this property, it is available for inspection at the branch by appointment. If you require a printed version of a Home Report, you will need to pay a reasonable production charge reflecting printing and other costs. 6. We are not able to offer an opinion either written or verbal on the content of these reports and this must be obtained from your legal representative. 7. Whilst we take care in preparing these reports, a buyer should ensure that his/her legal representative confirms as soon as possible all matters relating to title including the extent and boundaries of the property and other important matters before exchange of contracts.

Fox & Sons is a trading name of Sequence (UK) Limited which is registered in England and Wales under company number 4268443, Registered Office is Cumbria House, 16-20 Hockliffe Street, Leighton Buzzard, Bedfordshire, LU7 1GN. VAT Registration Number is 500 2481 05.


fox & sons



01460 73421



Crewkerne@fox-and-sons.co.uk



1-3 Market Square, CREWKERNE, Somerset,
TA18 7LE



fox-and-sons.co.uk