



183 Park Avenue, Bushey, WD23 2DQ

This immaculately presented one and half bedroom house is brand new and located in a sought after location in Bushey. The property has been completed to a very high standard and is available now for professional tenants only. This property benefits from having its own private garden and allocated parking.

Located in North Bushey, with Watford Junction Station within easy reach as well as major road links of the M1, M25 & A41. This immaculate property will impress as soon as you walk through the front door. The current owners have done an impressive refurbishment throughout to a high specification.

Unique properties like this one will be in very high demand and we strongly recommend an internal inspection to avoid disappointment.

£1,550

183 Park Avenue

, Bushey, WD23 2DQ

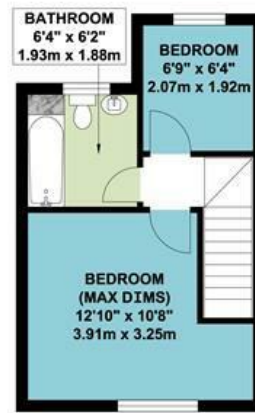


[Directions](#)



Floor Plan

PARK AVENUE BUSHEY WD23



APPROX. GROSS INTERNAL FLOOR AREA 496.10 SQ. FT / 46.09 SQ. M

WHILST EVERY ATTEMPT HAS BEEN MADE TO ENSURE THE ACCURACY OF THE FLOOR PLAN CONTAINED HERE, MEASUREMENTS OF DOORS, WINDOWS, ROOMS AND ANY OTHER ITEMS ARE APPROXIMATE AND NO RESPONSIBILITY IS TAKEN FOR ANY ERROR, OMISSION, OR MIS-STATEMENT. THIS PLAN IS FOR ILLUSTRATIVE PURPOSES ONLY AND SHOULD BE USED AS SUCH, BY ANY PROSPECTIVE PURCHASER. FLOOR PLANS ARE NOT DONE TO "SCALE".

These particulars, whilst believed to be accurate are set out as a general outline only for guidance and do not constitute any part of an offer or contract. Intending purchasers should not rely on them as statements of representation of fact, but must satisfy themselves by inspection or otherwise as to their accuracy. No person in this firm's employment has the authority to make or give any representation or warranty in respect of the property.

