

OVER 60?

Secure this property
for up to **59% less!**



Guide Price

£700,000

Freehold

5x  3x  1x 

Poplar Road, Wittersham, Tenterden, Kent,

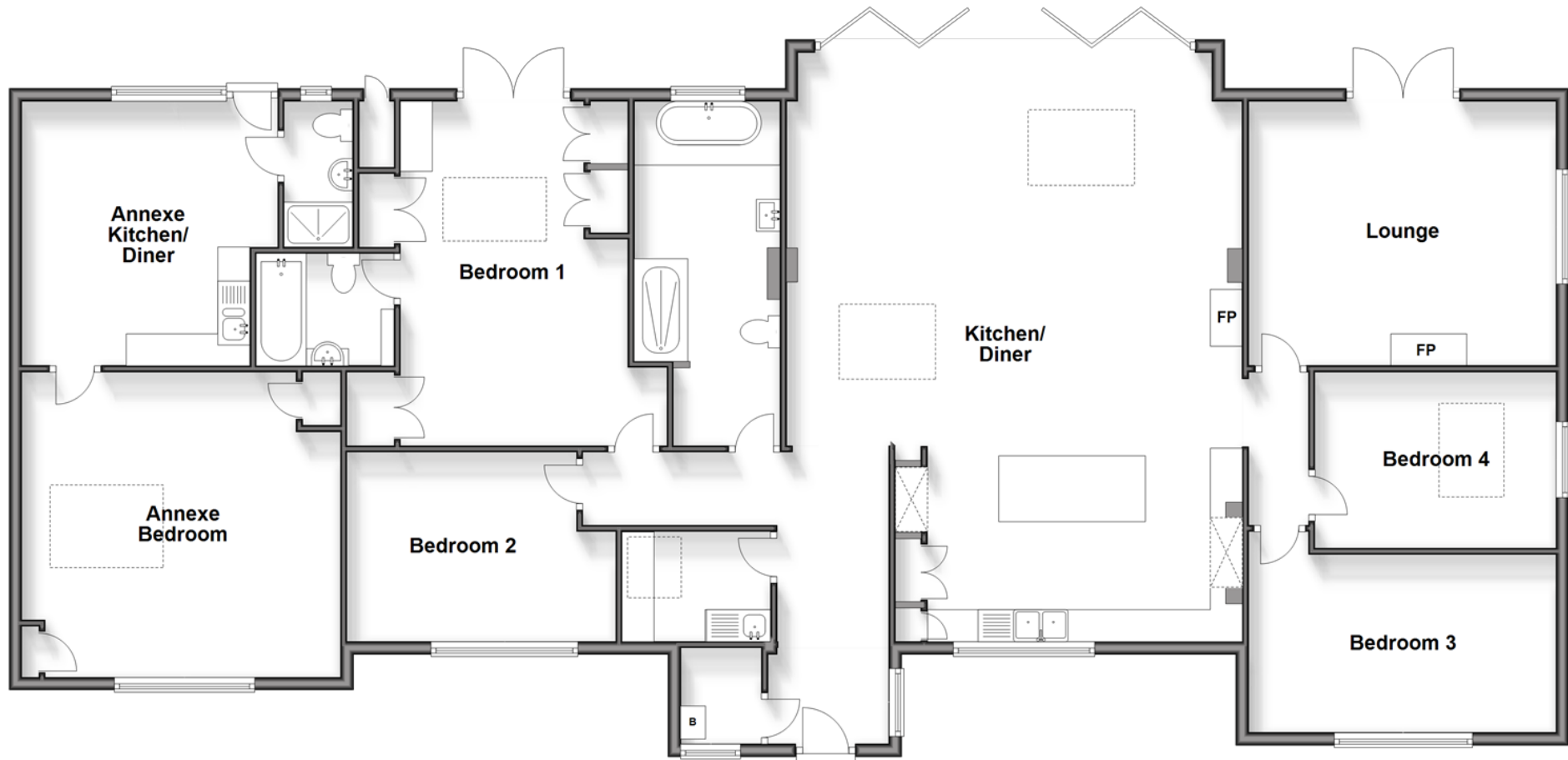
TN30

Wards

Helping you move forwards

Ground Floor

Approx. 222.1 sq. metres (2390.3 sq. feet)



Accommodation

GROUND FLOOR

Entrance Hall

Lounge: 15'9 x 13'7 (4.80m x 4.14m)

Kitchen/Diner: 30'3 x 23'9 (9.23m x 7.24m)

Bedroom 4: 12'7 x 8'6 (3.84m x 2.59m)

Bedroom 3: 15'11 x 10'5 (4.85m x 3.18m)

Hallway

Utility Room

Cloakroom

Bathroom

Bedroom 1: 17'5 x 11'9 (5.31m x 3.58m)

En-suite Shower Room: 7'2 x 5'4 (2.19m x 1.63m)

Bedroom 2: 14'2 x 9'9 (4.32m x 2.97m)

ANNEX

Bedroom Area: 16'3 x 15'7 (4.96m x 4.75m)

Kitchen/Diner

Shower Room

OUTSIDE

Front and Rear Gardens

Driveway



Main features

- Huge open plan kitchen/diner/day area
- Self contained Annexe
- Beautifully landscaped rear garden with rural back drop
- Off road parking for multiple cars
- Desirable village/semi-rural location
- Solar panels



Nearest Schools

Primary Schools: Wittersham C of E Primary 0.9 miles, Tenterden C of E Junior School 3.0 miles, Rolvenden Primary 3.3 miles

Secondary Schools: Homewood School and Sixth Form



Transport Information

Train Stations: Appledore 5.2 miles, Ham Street 7.6 miles, Pluckley 9.6 miles



Address

Poplar Road, Wittersham, Tenterden, Kent, TN30



Directions

For directions to this property please contact us.



Wards
Helping you move forwards

Call Tenterden Branch 01580 766002 ■ wardsofkent.co.uk



- Legal advice should be taken to verify fixtures/fittings, planning, alterations and/or lease details
- Appliances & services are untested, dimensions are approximate and floor plans are not to scale
- Through a Homewise Home For Life Plan people aged 60+ can secure this property for up to 59% less, by purchasing a Lifetime Lease

EPC RATING

CURRENT:	POTENTIAL:
C(75)	B(88)

14007881/20260102/DS/AQ