



**Stoneacre**  
Properties



**Parlington Meadow, Leeds, LS15 4PB**  
**Offers Over £350,000**

**\*\*\*EXTENDED DETACHED BUNGALOW\*\*\***

Offered to the market is the stunning two bedroom detached bungalow located on Parlington Meadow, Barwick in Elmet, Leeds. This property is situated in a popular village location with local amenities easily accessible.

The property briefly comprises of: kitchen, hall way, dining room, lounge, two bedrooms, bathroom and sun room. Externally the property benefits from a low maintenance rear garden with grass laid to lawn. To the side elevation is a large driveway providing off street parking for multiple cars along with a garage with power and lights. This beautiful bungalow is not one to be missed to arrange your viewing please contact the office today.

## KITCHEN



Range of wall and base units. Integrated oven with gas hob and extractor fan above. Integrated fridge/freezer. Integrated dishwasher. Integrated washing machine. Sink and drainer Double glazed window to the side elevation. Door to the side elevation.

## HALL WAY



Central heating radiator.

## DINING ROOM



Double glazed windows to the front and side elevation. Central heating radiator.

## LOUNGE



Double glazed window to the front elevation. Central heating radiator. Fire with surround.

## BEDROOM ONE



Double glazed window to the rear elevation. Central heating radiator. Fitted wardrobes.

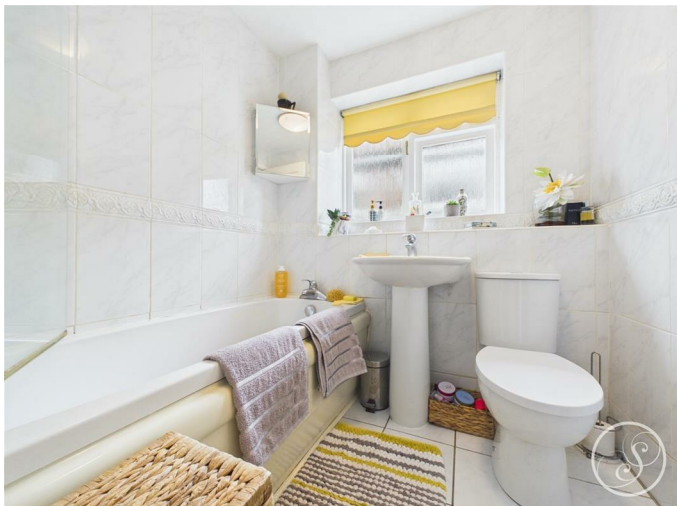
## BEDROOM TWO



Sliding doors leading to sun room. Central heating radiator.

## BATHROOM

Power and lights.



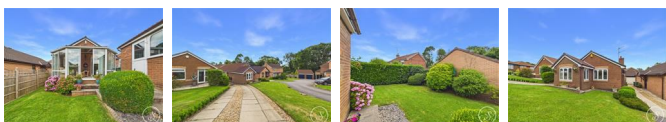
Double glazed frosted window to the size elevation. Low flush w.c. Wash hand basin. Bath with shower above. Heated towel rail.

## SUN ROOM



Double glazed windows. Sliding door leading to rear garden.

## EXTERNAL



Grass laid to lawn to the rear elevation. Driveway to the side elevation providing off street parking for multiple cars.

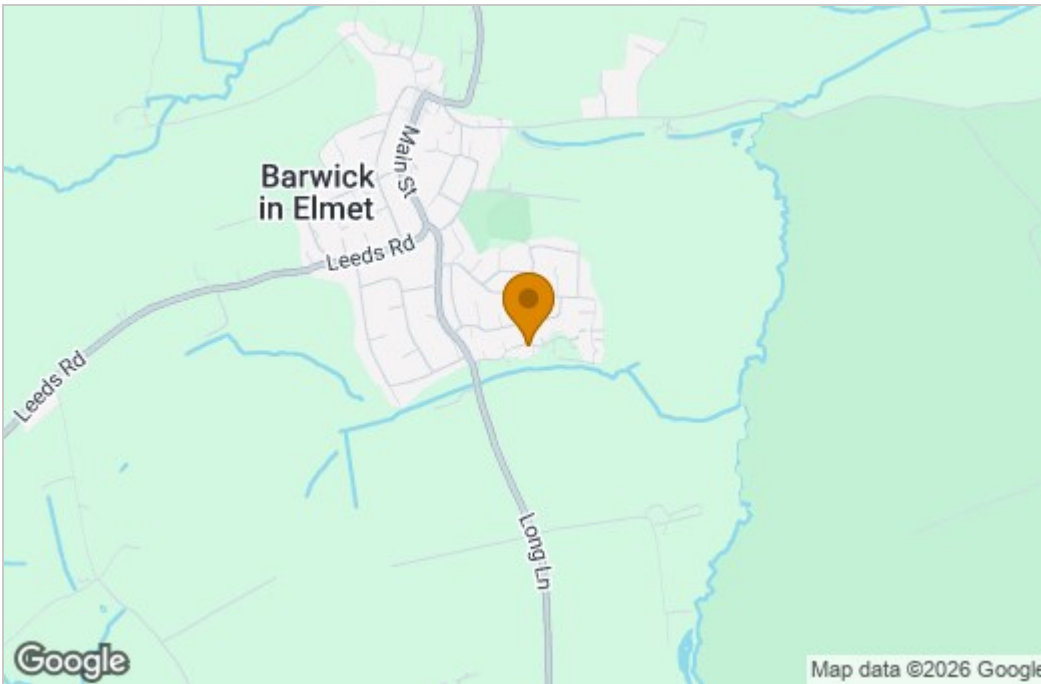
## GARAGE



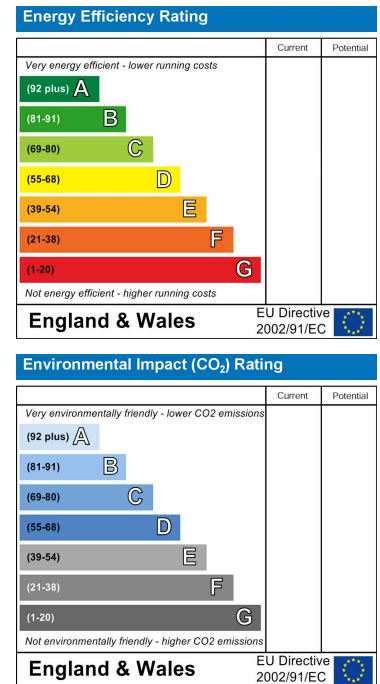
# Floor Plan



# Area Map



# Energy Efficiency Graph



These particulars, whilst believed to be accurate are set out as a general outline only for guidance and do not constitute any part of an offer or contract. Intending purchasers should not rely on them as statements of representation of fact, but must satisfy themselves by inspection or otherwise as to their accuracy. No person in this firm's employment has the authority to make or give any representation or warranty in respect of the property.

