

RIVERHOMES

Captain House
Wandsworth SW18

£2,250 per month
Part furnished



Coptain House Wandsworth SW18

A spacious first floor apartment in the sought after Riverside Quarter development. The space comprises a fully fitted kitchen with integrated appliances and an open plan living room with two balconies offering superb views of the River Thames. The well proportioned bedroom benefits from fitted wardrobes.

Residents of Riverside Quarter benefit from use of two gyms, swimming pool, communal gardens, convenience store and 24-hour security and concierge. The apartment is within walking distance of Wandsworth Town station and bus

links to East Putney(district) underground station. The Thames Clipper River boat service to Westminster and the City leaves directly from Riverside Quarter pier. The pretty green spaces of Wandsworth Park are also moments away.

KEY FEATURES

One double bedroom apartment

Open plan living room

Private balcony

24 hour concierge service

Access to swimming pool and fitness centre

Access to local shops and restaurants





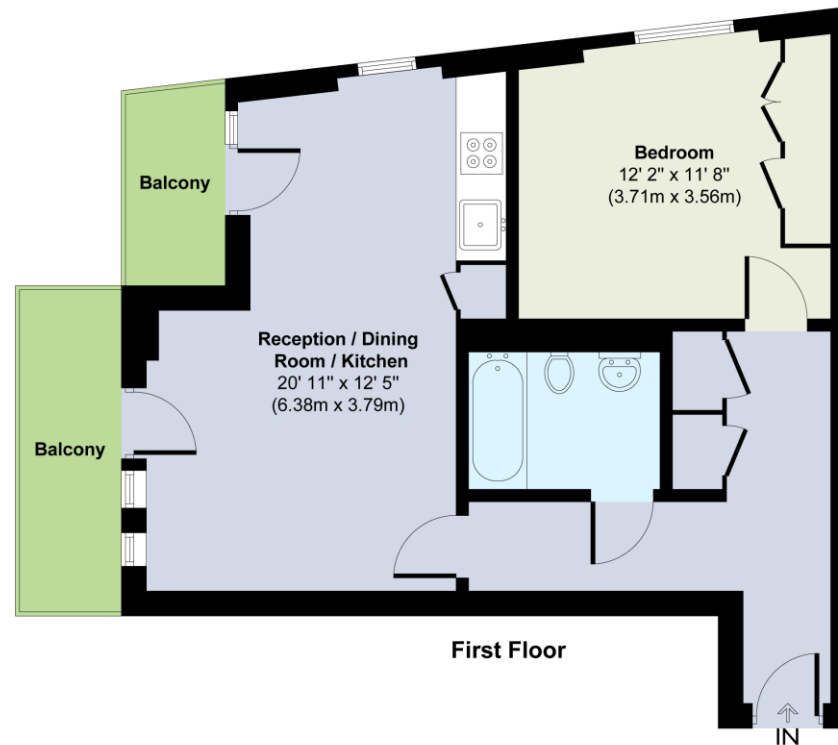
ENERGY PERFORMANCE CERTIFICATE

Score	Energy rating	Current	Potential
92+	A		
81-91	B		
69-80	C	74 c	76 c
55-68	D		
39-54	E		
21-38	F		
1-20	G		

KEY INFORMATION

Local authority:	Wandsworth
Internal area:	561 sq. ft. / 52.1 sq. m.
Garden area:	Balcony
No. of bedrooms:	1
Council tax:	Band E

Captain House



Approximate Gross Internal Area = 52.1 sq.m / 561 sq.ft

This plan is not to scale and must be used as layout guidance only. All measurements and areas are approximate and should not be relied upon to provide accurate information. This plan must not be relied upon when making property valuations, design considerations or any other such relevant decisions. We accept no responsibility or liability (whether in contract, tort or otherwise) in relation to any loss whatsoever arising from or in connection with any use of this plan or the adequacy, accuracy or completeness of it or any information within it.