

## Cherry Crescent, TW8

£692 Per week

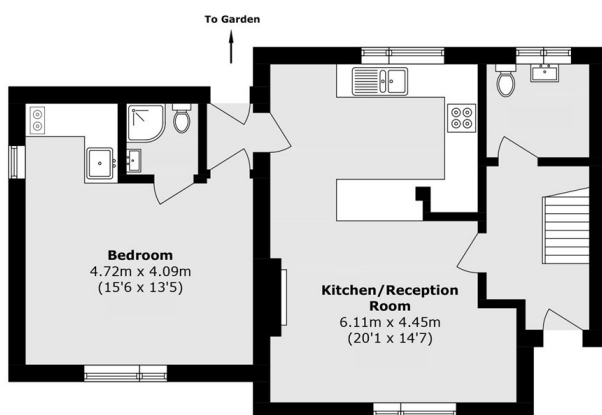
Located in a popular residential location close to transport links, is this modern five bedroom semi detached family home, that is finished to an excellent standard throughout and benefits from a beautiful rear garden and off street parking for multiple cars.

Cherry Crescent is well-served by various transport links with direct connections to Central London. For drivers, the property is well-connected to major roads, providing quick routes in and out of London, including convenient access to Heathrow Airport.

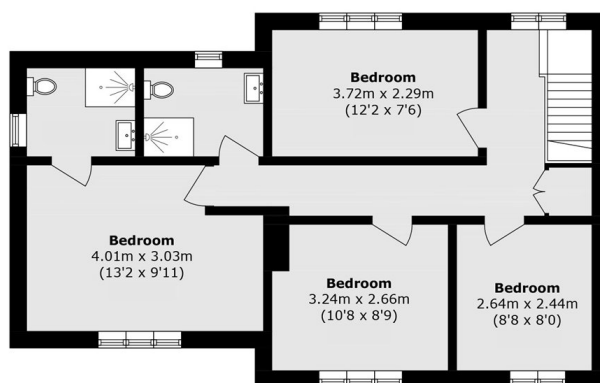
### Features

- Five Bedrooms
- Three Bathrooms
- Semi-Detached
- Private Garden
- Off-Street Parking
- Modern Throughout

# Cherry Crescent, Brentford, TW8



**Ground Floor**



**First Floor**

Total area (approx.): 110.7 sq. m (1191.5 sq. ft)