



SEYMOUR ROAD, SW19

£11,500 per month

Six bedrooms
Four bathrooms
Stunning landscaped garden
Four storeys
Gated off-street parking
Energy rating: c

@marshandparsons
marshandparsons.co.uk

MARSH &
PARSONS

ABOUT THE PROPERTY

A stunning contemporary six bedroom home to let in a sought after Wimbledon Village location. This spacious house has over 3700 sq ft of living space, with open plan reception/kitchen, four luxury bathrooms, immaculate landscaped private garden and gym room.

Seymour Road is located just around the corner from Wimbledon Common and All England Lawn Tennis Club. All of the local boutique village shops, restaurants and pubs are also just a short distance away.

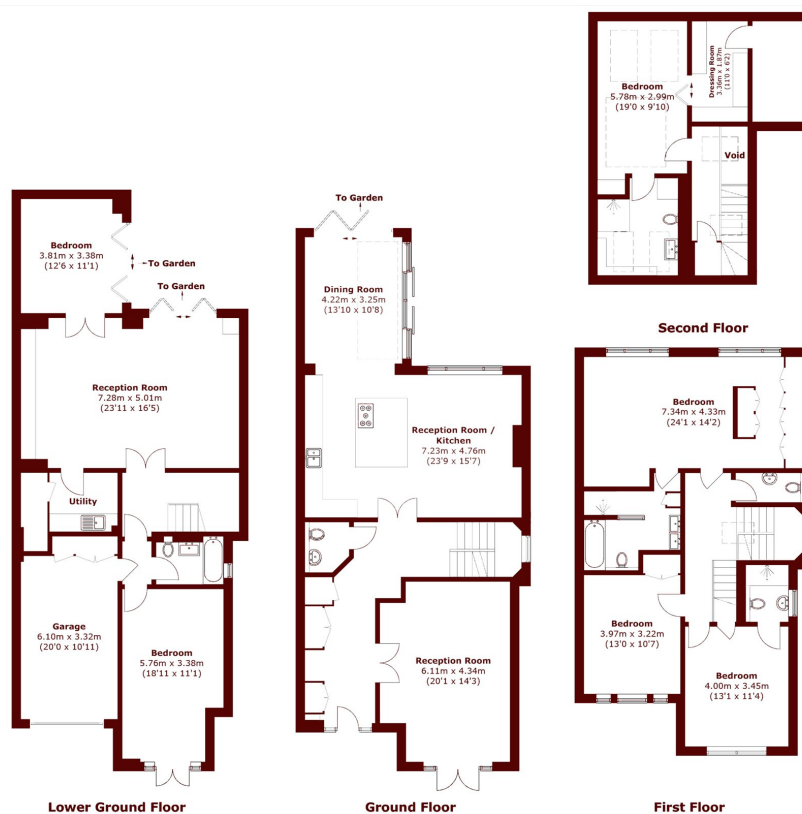








STEP INSIDE SEYMOUR ROAD



Total area (approx.): 347.4 sq. m (3,739.3 sq. ft)
(Excluding Void)

Wimbledon
020 8879 6661

Energy Rating: C We aim to make our particulars both accurate and reliable. However, they are not guaranteed; nor do they form part of an offer or contract. If you require clarification on any points then please contact us, especially if you're traveling some distance to view. Please note that appliances and heating systems have not been tested and therefore no warranties can be given as to their good working order

MARSH &
PARSONS