



## NELSONS YARD, NW1

£1,195,000

Three bedrooms  
Two bathrooms  
Two terraces  
Garage  
Study  
No onward chain

@marshandparsons  
marshandparsons.co.uk

MARSH &  
PARSONS



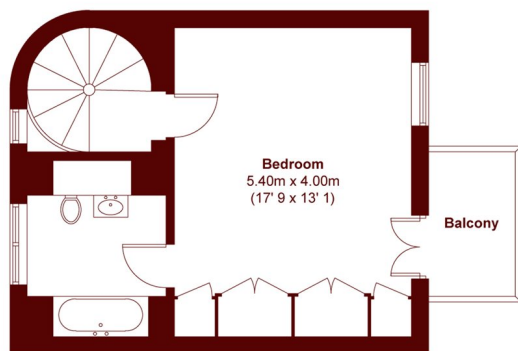
# ABOUT THE PROPERTY

A three bedroom terraced home situated within a small gated development near to Camden Town centre. The property comes complete with a reception room, study, two terraces, garage, two bathrooms and is offered to the market with no onward chain.

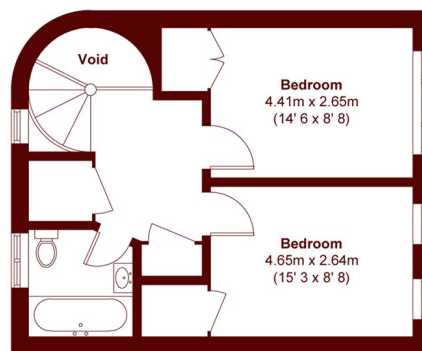
This idyllic location is just minutes from Mornington Crescent Underground Station (Northern Line) in Camden. Camden is renowned for its vibrant mix of culture, music, and art, offering a dynamic lifestyle rich in character and history.



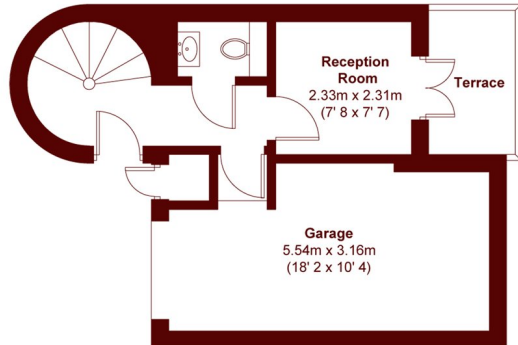
# STEP INSIDE NELSONS YARD



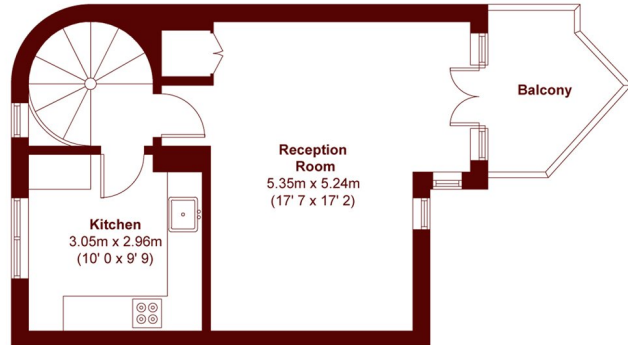
Second Floor



Third Floor



Ground Floor



First Floor

APPROX. GROSS INTERNAL FLOOR AREA = 1478 SQFT / 137.3 SQM  
(EXCLUDING VOID)  
APPROX. GROSS EXTERNAL TERRACE AREA = 40 SQFT / 3.7 SQM  
APPROX. GROSS EXTERNAL BALCONY AREA = 78 SQFT / 7.3 SQM

Camden  
020 7244 2200

Energy Rating: TBC We aim to make our particulars both accurate and reliable. However, they are not guaranteed; nor do they form part of an offer or contract. If you require clarification on any points then please contact us, especially if you're traveling some distance to view. Please note that appliances and heating systems have not been tested and therefore no warranties can be given as to their good working order

MARSH &  
PARSONS