

**33 Castlehaven Close, Chippenham, SN15 3TG**

**£219,950**

Located on the popular development of Pewsham within a cul de sac position, a modern two bedroom terrace house. The accommodation briefly comprises: Hall, kitchen, living room, two bedrooms and bathroom. The property benefits from double glazing and gas central heating. To the rear there is an enclosed garden, there is also allocated parking.

**Living Room 13'11" x 11'05" (4.24m x 3.48m)**



Double glazed window, radiator.

**Kitchen / Breakfast 13'11" x 8'10" (4.24m x 2.69m)**



Double glazed window, work tops with a range of cupboards and drawers, inset sink unit, inset gas hob with cooker hood, electric oven, plumbing and space for washing machine, space for fridge/freezer, radiator, door to garden.

**Landing**

Doors to both bedrooms and bathroom.

**Bedroom One 11'07" x 10'09" (3.53m x 3.28m)**



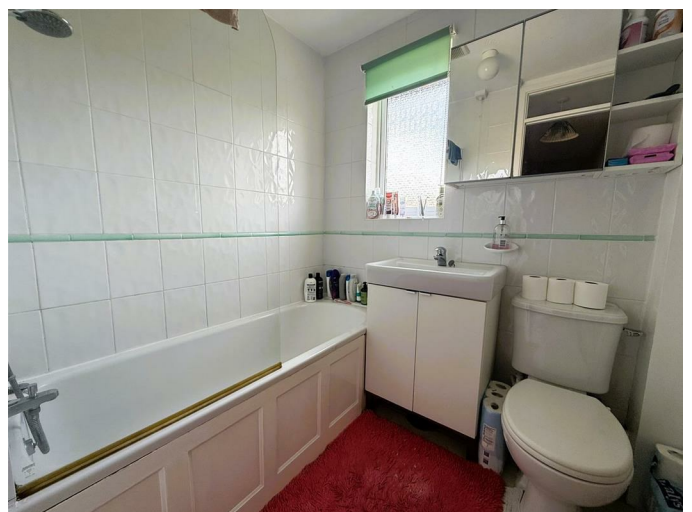
Double glazed window, two radiators.

**Bedroom Two 9'0" x 7'01" (2.74m x 2.16m)**



Double glazed window, radiator.

**Bathroom**



Double glazed window, bath with mixer/spray shower, hand basin, W.C.

**Outside**

## Rear



Enclosed garden with lawn and gated rear access.

## Front

Path to front door.

## Parking

There is allocated parking.

## Tenure

GOV.UK advise Freehold.

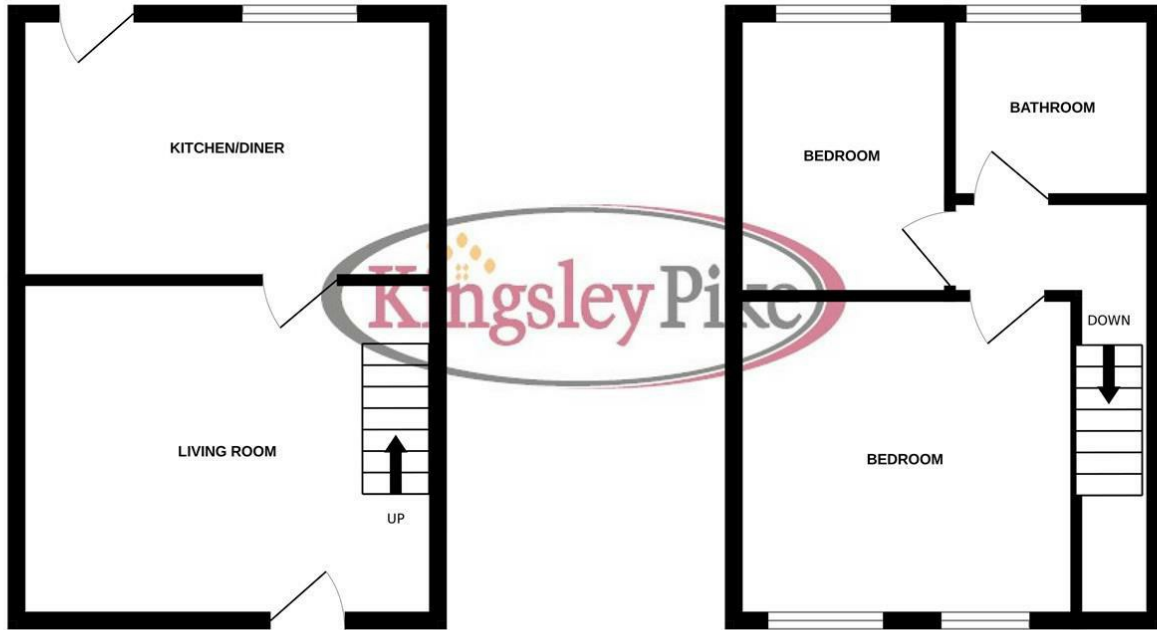
## Council Tax Band

GOV.UK advise Band B.

# Floor Plan

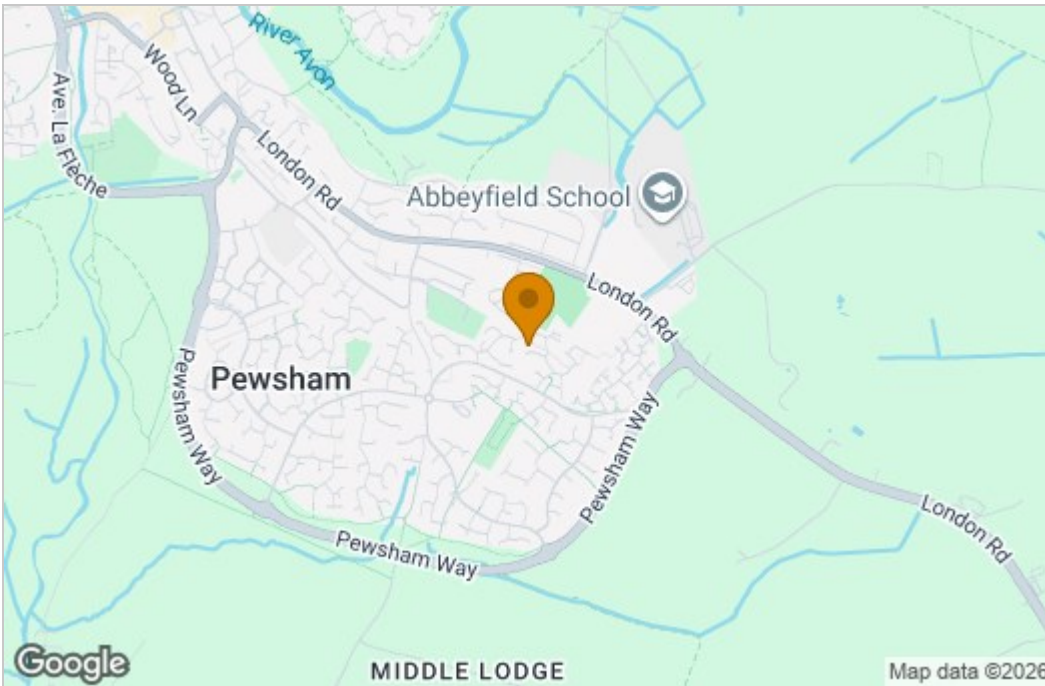
GROUND FLOOR

1ST FLOOR

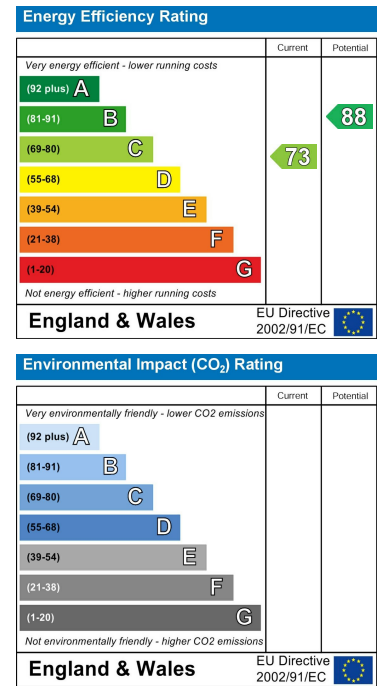


Whilst every attempt has been made to ensure the accuracy of the floorplan contained here, measurements of doors, windows, rooms and any other items are approximate and no responsibility is taken for any error, omission or mis-statement. This plan is for illustrative purposes only and should be used as such by any prospective purchaser. The services, systems and appliances shown have not been tested and no guarantee as to their operability or efficiency can be given.  
Made with Metropix ©2026

# Area Map



# Energy Efficiency Graph



These particulars, whilst believed to be accurate are set out as a general outline only for guidance and do not constitute any part of an offer or contract. Intending purchasers should not rely on them as statements of representation of fact, but must satisfy themselves by inspection or otherwise as to their accuracy. No person in this firm's employment has the authority to make or give any representation or warranty in respect of the property.