



CPR Certificate Not Signed

Price

£385,000

Freehold

3x  2x  1x 

The Carmack,
Wellington Gardens,
Walmer, Kent, CT14

Wards
Helping you move forwards



Main features

- **Open plan kitchen diner with contemporary fitted kitchen with integrated appliances and French doors leading to rear garden**
- **Separate lounge for entertaining**
- **Sumptuous principle bedroom with dressing area and en-suite designed for relaxation**
- **Roca white bathroom suite with chrome fittings**
- **10-year NHBC warranty and 2-years Abbey Homes Customer Care**
- **Garage & off-road parking with EV Charging Point**

Accommodation

GROUND FLOOR

Entrance Hall
 Lounge: 13'7 x 11'7 (4.14m x 3.53m)
 Kitchen/Diner: 15'2 x 10'0 (4.63m x 3.05m)
 Cloakroom

FIRST FLOOR

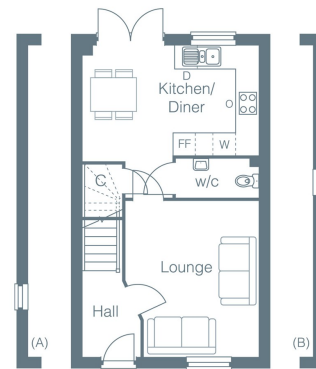
Landing
 Bedroom 2: 15'2 x 10'0 (4.63m x 3.05m)
 Bedroom 3: 15'2 x 9'2 (4.63m x 2.80m)
 Bathroom

SECOND FLOOR

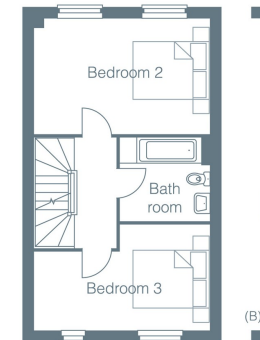
Bedroom 1: 15'2 x 13'4 (4.63m x 4.07m)
 Dressing Area: 8'0 x 6'7 (2.44m x 2.01m)
 En-Suite Shower Room

OUTSIDE

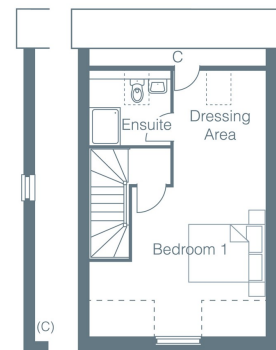
Front & Rear Gardens
 Garage & Off-Road Parking



Ground Floor



First Floor



Second Floor