







Outside

Front

Having a gravel driveway and attractive mature hedged borders

Rear

Having a paved patio area, flower bed, lawn area and an additional paved patio area to the rear

Ground Floor

Hallway

Having a double glazed front entrance door, laminate flooring, radiator, ceiling light point, stairs to first floor and door to lounge

Lounge

Having a double glazed window to the front aspect, radiator, ceiling light point, fireplace, laminate flooring, storage cupboard and door to kitchen

Kitchen

Being a fitted kitchen with a range of wall, base and drawer units with laminate work surfaces over and having a one and a half bowl sink/drainer, integrated oven with electric hob and extractor hood over, tiled splash-backs, space for appliances, radiator, two ceiling light points, tiled flooring, space for dining furniture, double glazed window to the rear aspect and double glazed door for access to the rear garden



First Floor

Landing

Having carpeted flooring, double glazed window to the side aspect, ceiling light point and doors to bedrooms and bathroom

Bedroom 1

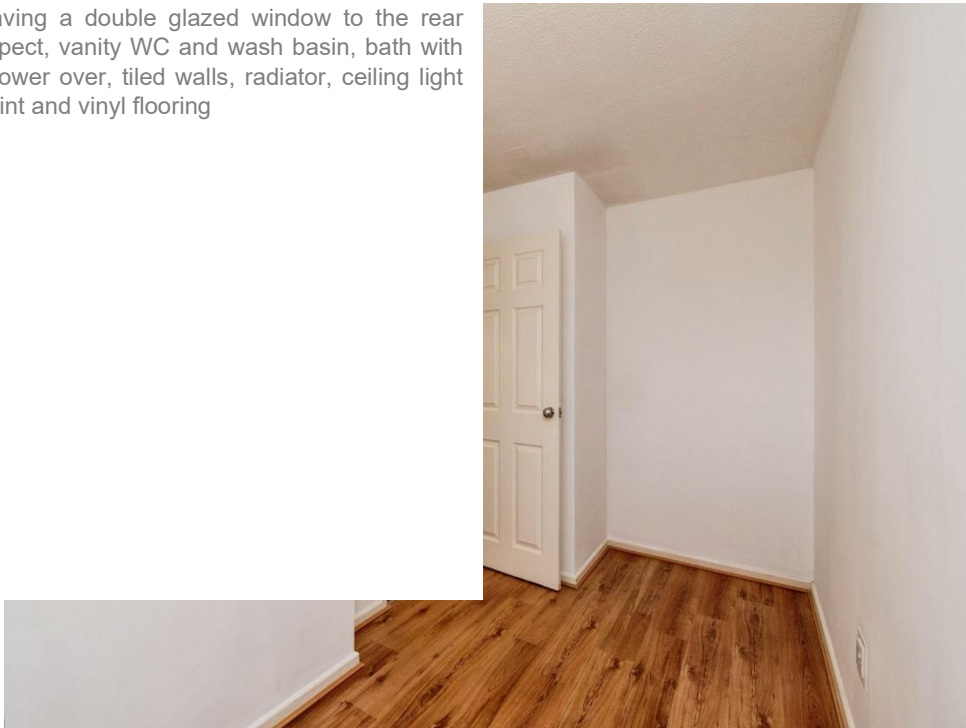
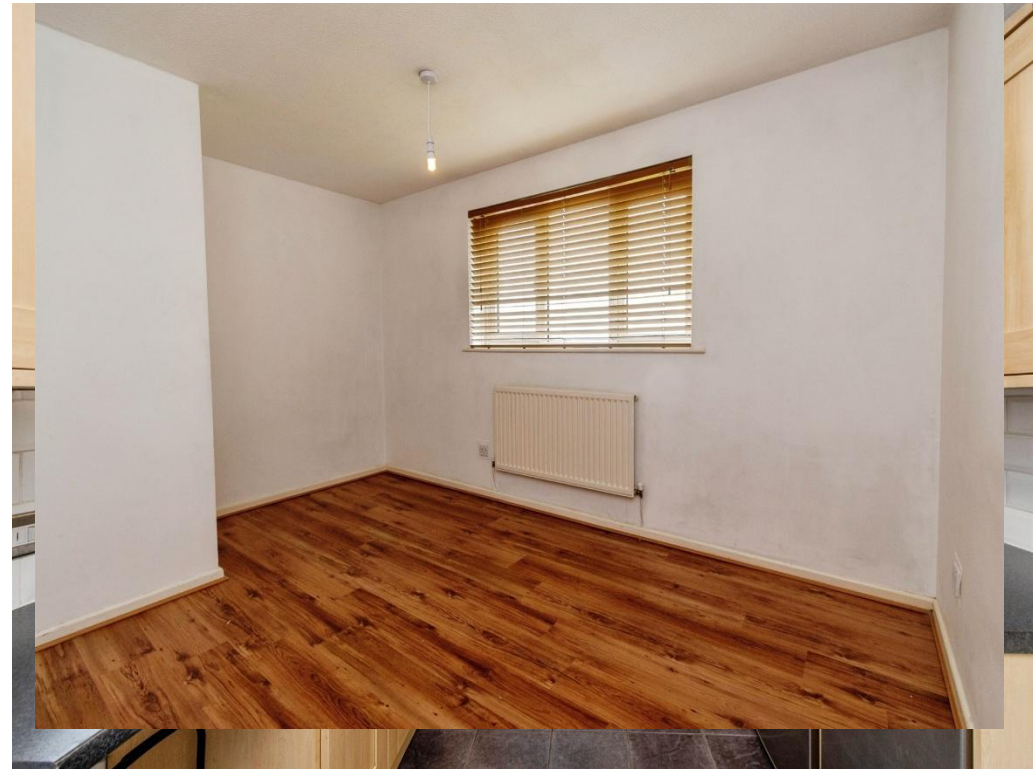
Having a double glazed window to the front aspect, radiator, ceiling light point and laminate flooring

Bedroom 2

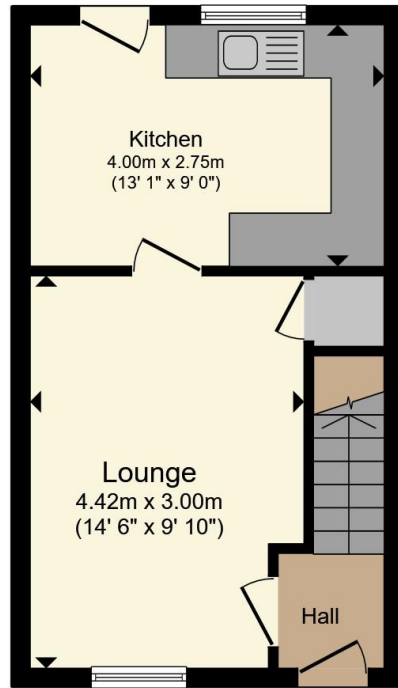
Having a double glazed window to the rear aspect, radiator, ceiling light point and laminate flooring

Bathroom

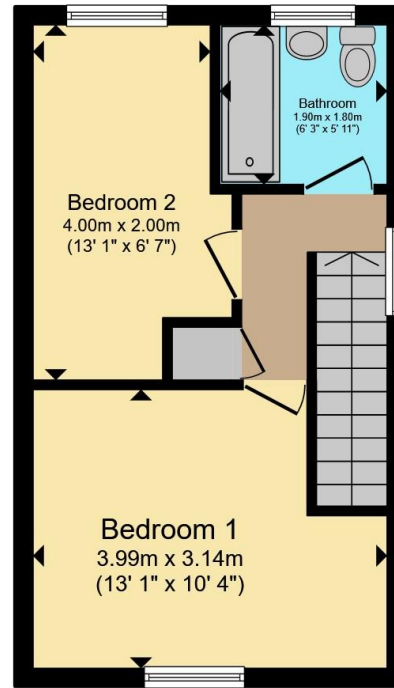
Having a double glazed window to the rear aspect, vanity WC and wash basin, bath with shower over, tiled walls, radiator, ceiling light point and vinyl flooring







Ground Floor



First Floor

Total floor area 57.8 m² (622 sq.ft.) approx

This floor plan is for illustrative purposes only. It is not drawn to scale. Any measurements, floor areas (including any total floor area), openings and orientation are approximate. No details are guaranteed, they cannot be relied upon for any purpose and they do not form part of any agreement. No liability is taken for any error, omission or misstatement. A party must rely upon its own inspection(s). Powered by www.propertybox.io



To view this property please contact Connells on

T 01543 500923
E cannock@connells.co.uk

10-12 Wolverhampton Road
CANNOCK WS11 1AH





[view this property online connells.co.uk/Property/CNK108916](https://connells.co.uk/Property/CNK108916)

EPC Rating: Council Tax
Awaited Band: B

Tenure: Freehold

1. MONEY LAUNDERING REGULATIONS Intending purchasers will be asked to produce identification documentation at a later stage and we would ask for your co-operation in order that there will be no delay in agreeing the sale. 2. These particulars do not constitute part or all of an offer or contract. 3. The measurements indicated are supplied for guidance only and as such must be considered incorrect. Potential buyers are advised to recheck measurements before committing to any expense. 4. We have not tested any apparatus, equipment, fixtures, fittings or services and it is in the buyers interest to check the working condition of any appliances.

Connells Residential is registered in England and Wales under company number 1489613, Registered Office is Cumbria House, 16-20 Hockliffe Street, Leighton Buzzard, Bedfordshire, LU7 1GN. VAT Registration Number is 500 2481 05.

