



ALDERBURY BARN

Hill Farm, Alderminster, Stratford-upon-Avon, Warwickshire



A VERY FINE, NEWLY CONVERTED PROPERTY,
CREATED FROM TRADITIONAL 19TH-CENTURY BRICK
BARNs, PROVIDING A STUNNING FIVE-BEDROOM
HOME IN A LOVELY ELEVATED RURAL LOCATION.

The property provides a blend of attractive modern styling whilst maintaining original features to provide a substantial, unique and architecturally interesting family home in an idyllic setting. The combination of historic features with modern building and energy standards makes this a rare opportunity.

Alderbury Barn 3,683 square feet plus two open-fronted garages • Enclosed courtyard with electric gates and paved terraces

Entrance hall • Cloakroom • Study • Drawing room • Ground floor bedroom 5 with en suite shower room
Kitchen/breakfast room with sliding patio doors opening to the dining room and to the family room with bifold doors to the garden

Galleried landing • Principal bedroom with dressing room and bathroom • Two further bedrooms and family bathroom
Bedroom 2 with en suite shower room

Garden and patio.

SITUATION

Alderbury Barn at Hill Farm is situated a short distance above the popular village of Alderminster, close to Stratford-upon-Avon and within walking distance of an award-winning gastro pub, The Bell. Extensive shopping, restaurant and leisure facilities, including the world-renowned Royal Shakespeare Company, can be found at nearby Stratford-upon-Avon.

The area is well served by state, private and grammar schools, including The Croft Prep School, King Edward's Grammar School for Boys, Shottery School for Girls and Stratford High School. Warwick and Leamington Spa also provide excellent schooling, including Warwick Prep and Public School and King's High School for girls. Bloxham and Sibford near Banbury and Kitebrook near Moreton-in-Marsh.

For the commuter, there is easy access to the M40 (J15) approximately 10 miles away, while there is a regular train service from Warwick Parkway and Banbury to London Marylebone and from Moreton in Marsh to London Paddington. Racing is at Warwick, Stratford-upon-Avon and Cheltenham.

Polo at Cirencester. A popular location for equestrian activities and access to competitions and events. Golf courses are at Brailes, Tadmarton, Stratford-upon-Avon and the Welcombe Hotel.

Distances:

Stratford-upon-Avon 5 miles, Shipston-on-Stour 5.5 miles, M40 (J15) 10 miles, Moreton-in-Marsh 11 miles, Warwick 11 miles, Leamington Spa 11 miles, Warwick Parkway Station 11 miles (intercity trains to London Marylebone from 69 minutes) (distances and time approximate)





THE PROPERTY

In a sought-after rural location, yet close to Stratford-upon-Avon and the Cotswolds, Strathbury Barn and Alderbury Barn offer an exciting opportunity to purchase a very high-quality conversion created from a range of brick barns with timber cladding, slate roofs and high-performance black aluminium windows. The property incorporates traditional features, exposed truss timbers with uplighting and modern levels of thermal efficiency and insulation.

The property has a secure courtyard and terraces to the front and garden to the rear. The property has first-floor views over open countryside. The design was originally produced by renowned Cotswold-based Tyack Architects and enhanced further by Pinnacle Architecture.

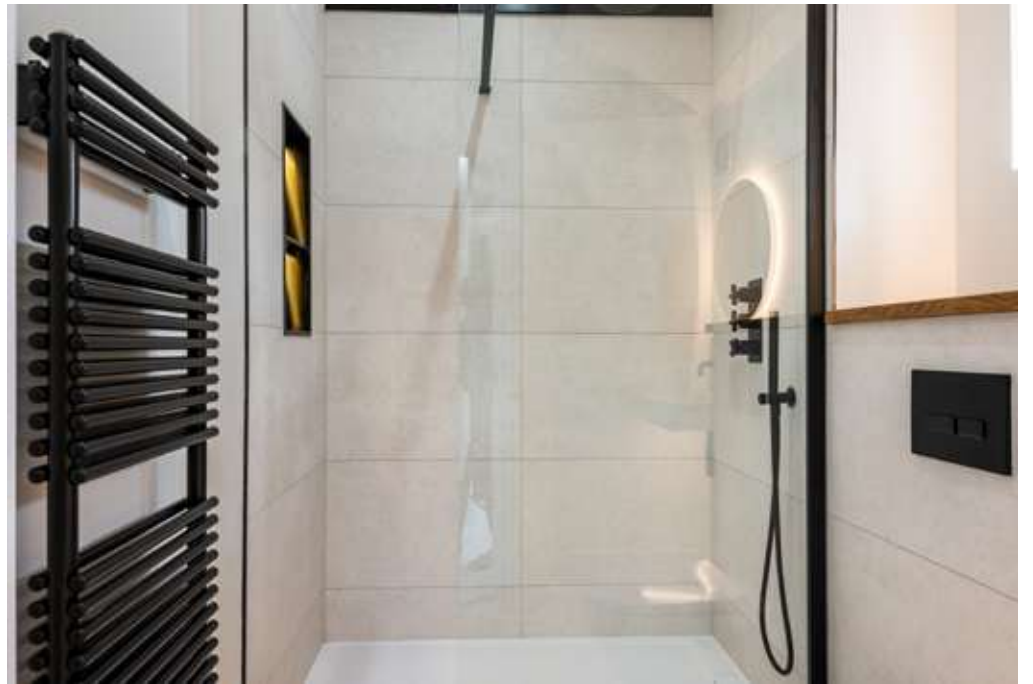
Alderbury Barn has a double-height reception hall. The property has porcelain tiles throughout much of the ground floor, which benefits from underfloor heating. Top-of-the-range solid timber Shaker kitchen and utility units from the award-winning Neptune, which carry a lifetime manufacture guarantee. Quartz worktops run throughout both rooms. Integrated appliances comprise an AGA induction oven and hob, Neff dishwasher, warming drawer, fridge and two freezers, plus a freestanding wine cooler.

First-floor accommodation has vaulted ceilings and exposed timber roof trusses. Sanitary ware includes Lusso wash basins, showers and baths, Porcelanosa tiles, touch-light mirrors and a copper bath in the main bedroom. Oak front door and staircase made of oak with wrought iron bannisters.

The property is sold with the benefit of a 10-year ICW structural defect warranty.





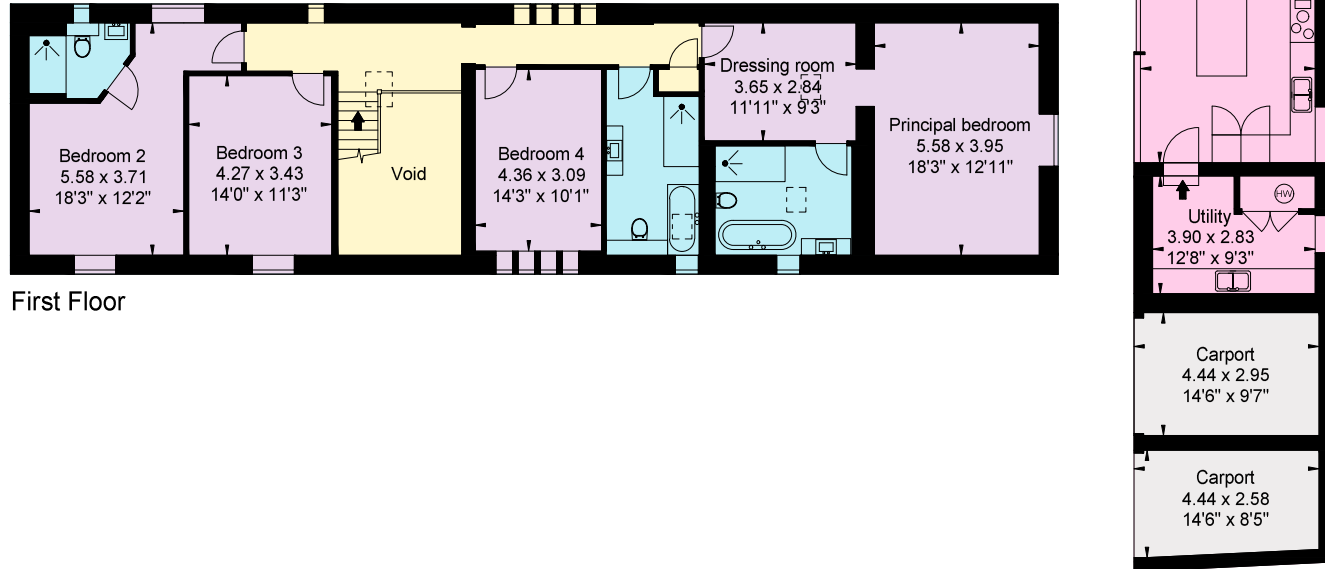
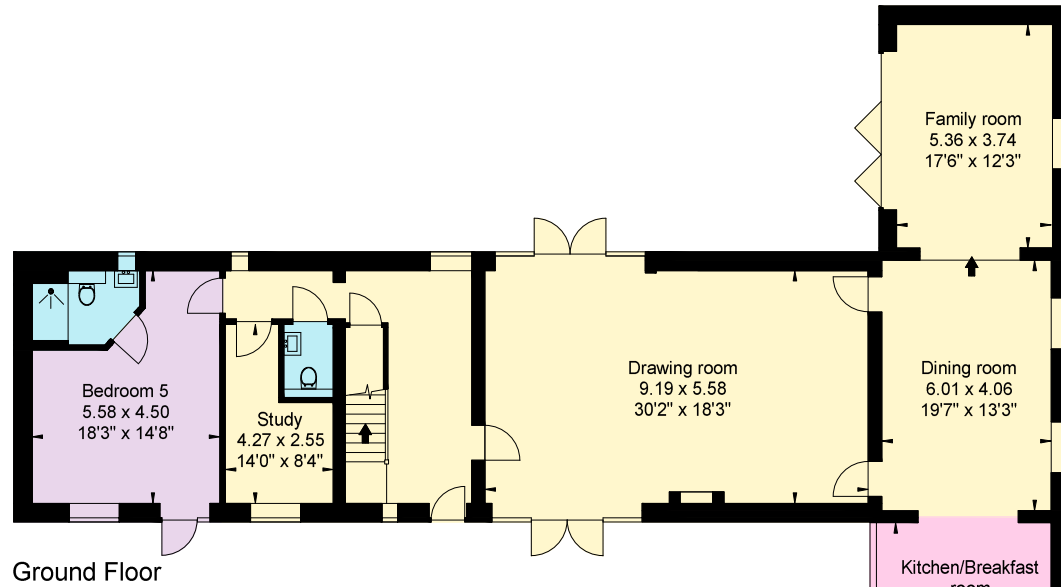
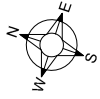




OUTSIDE

Outside the secure courtyard is gravelled in Yorkshire Cream, with electric gates controllable via a wall-mounted screen or App. The property has two open-fronted garages and ample secure parking. Behind are a number of paved patios and secure boundary fencing for privacy.

Please Note - The gravel and grass on the external photographs have been digitally enhanced.



APPROXIMATE GROSS INTERNAL FLOOR AREA:

House: 342 sq m / 3,683 sq ft

Carports: 24 sq m / 259 sq ft

Total: 366 sq m / 3,942 sq ft

This plan is for layout guidance only. Not drawn to scale unless stated. Windows and door openings are approximate. Whilst every care is taken in the preparation of this plan, please check all dimensions, shapes and compass bearings before making any decisions reliant upon them.



PROPERTY INFORMATION

Services

Mains water and electricity are connected to the property. Private, low-maintenance sewerage treatment plant. Air source heat pump heating. Full fibre broadband. Electric vehicle charging points.

Directions (CV37 8PE)

From Stratford-upon-Avon, proceed south on the A3400 towards Shipston-on-Stour. After approximately 4.5 miles, you will arrive at the village of Alderminster. After passing The Bell public house on the right-hand side, take the second left on to New Road. Proceed up the hill out of the village, and Hill Farm will be found on the right-hand side, and the access to the barns is the second entrance past the farmhouse.

What3words

///schematic.booth.paving

Tenure

Freehold

EPC

Alderbury Barn Band C

Local Authority

Stratford-on-Avon District Council. Telephone 01789 267575

Council Tax

TBC

Viewing

By prior appointment only with the agents

We would be delighted
to tell you more.

James Way
01789 206950
james.way@knightfrank.com

Knight Frank Stratford-upon-Avon
Bridgeway House, Bridgeway,
Stratford-upon-Avon, CV37 6YX

William Ward-Jones
01789 206951
william.ward-jones@knightfrank.com

Knight Frank Stratford-upon-Avon
Bridgeway House, Bridgeway,
Stratford-upon-Avon, CV37 6YX

[knightfrank.co.uk](https://www.knightfrank.co.uk)

Your partners in property

1. Particulars: These particulars are not an offer or contract, nor part of one. You should not rely on statements given by Knight Frank in the particulars, by word of mouth or in writing ("information") as being factually accurate about the property, its condition or its value. Neither Knight Frank nor any joint agent has any authority to make any representations about the property, and accordingly any information given is entirely without responsibility on the part of Knight Frank. 2. Material Information: Please note that the material information is provided to Knight Frank by third parties and is provided here as a guide only. While Knight Frank has taken steps to verify this information, we advise you to confirm the details of any such material information prior to any offer being submitted. If we are informed of changes to this information by the seller or another third party, we will use reasonable endeavours to update this as soon as practical. 3. Photos, Videos etc: The photographs, property videos and virtual viewings etc. show only certain parts of the property as they appeared at the time they were taken. Areas, measurements and distances given are approximate only. 4. Regulations etc: Any reference to alterations to, or use of, any part of the property does not mean that any necessary planning, building regulations or other consent has been obtained. A buyer must find out by inspection or in other ways that these matters have been properly dealt with and that all information is correct. 5. Fixtures and fittings: A list of the fitted carpets, curtains, light fittings and other items fixed to the property which are included in the sale (or may be available by separate negotiation) will be provided by the Seller's Solicitors. 6. VAT: The VAT position relating to the property may change without notice. 7. To find out how we process Personal Data, please refer to our Group Privacy Statement and other notices at <https://www.knightfrank.com/legals/privacy-statement>.

Particulars dated June 2026. Photographs and videos dated June 2026. All information is correct at the time of going to print. Knight Frank is the trading name of Knight Frank LLP. Knight Frank LLP is a limited liability partnership registered in England and Wales with registered number OC305934. Our registered office is at 55 Baker Street, London W1U 8AN. We use the term 'partner' to refer to a member of Knight Frank LLP, or an employee or consultant. A list of members names of Knight Frank LLP may be inspected at our registered office. If you do not want us to contact you further about our services then please contact us by either calling 020 3544 0692, email to marketing.help@knightfrank.com or post to our UK Residential Marketing Manager at our registered office (above) providing your name and address.



Date: 18 June 2026
Our reference: STR012625503

Alderbury Barn, New Road, Alderminster, Stratford-upon-Avon, CV37 8PE

We have pleasure in enclosing details of the above property for which we are quoting a guide price of **£1,900,000**.

Please let us know if you need any further information about the property or surrounding area and we will be delighted to provide it.

Full details of all our properties and a wide range of services can be viewed online at knightfrank.co.uk. You can also receive early information on new properties coming on to the market by signing up to [My Knight Frank](#).

For additional information or to make arrangements to view the property, please get in touch.

We'd love to help you.

Yours faithfully

KNIGHT FRANK LLP

Enc:

James Way
Partner, Head of Midlands Sales
+44 1789206950
james.way@knightfrank.com

William Ward-Jones
Partner, Office Head
+44 1789206951
william.ward-jones@knightfrank.com

Knight Frank, Stratford
Bridgeway House, Bridgeway, Stratford upon Avon, CV37 6YX
+44 1789 297 735

knightfrank.co.uk

Knight Frank LLP is a limited liability partnership registered in England and Wales with registered number OC305934. Our registered office is at 55 Baker Street, London W1U 8AN. We use the term 'partner' to refer to a member of Knight Frank LLP, or an employee or consultant. A list of members' names of Knight Frank LLP may be inspected at our registered office.

Regulated by RICS

Your partners in property

V4.3 Sep 24