



Park Road, KT1

£359,950

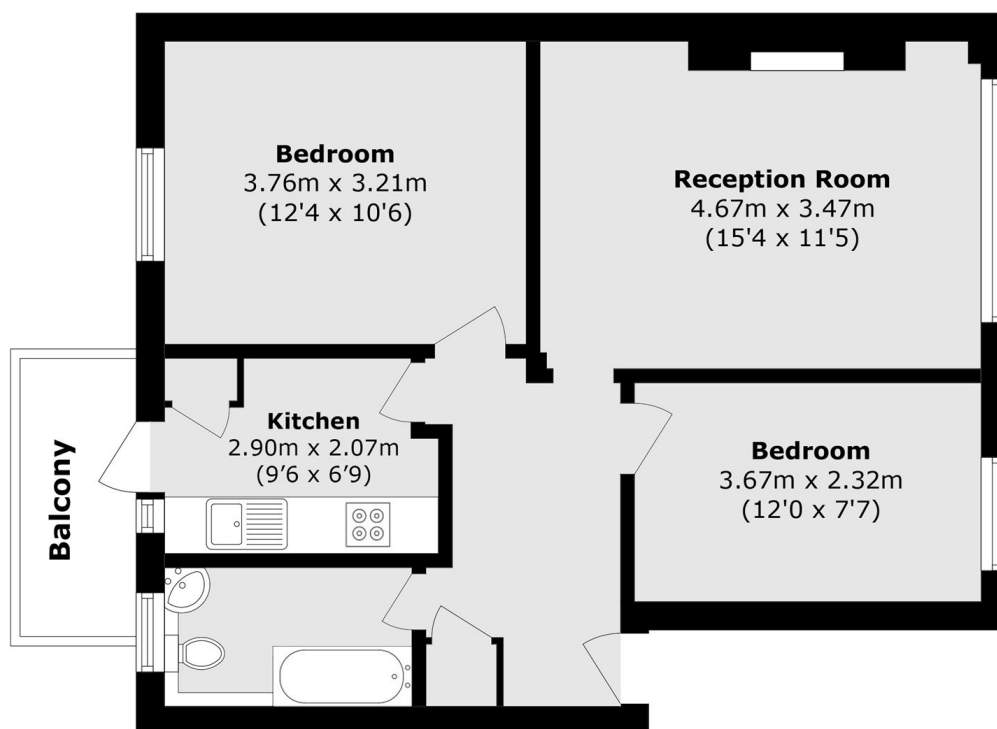
This apartment is located in a very popular development close to Royal Bushy Park. It offers two double bedrooms, a balcony and communal gardens along with unallocated parking, one not to be missed.

Park Court is located off Park Road, with easy access to Hampton Wick mainline station and a quarter of a mile from Kingston town centre and next to Bushy Park.

Features

- Two Double Bedrooms
- Excellent Location
- Communal Gardens
- Parking
- Great Transport Links
- Balcony

Park Road, Hampton Wick, KT1



Total area (approx.): 56.7 sq. m (610.3 sq. ft)

Balcony Total (approx.): 3.6 sq. m (38.7 sq. ft)