



# Indecon Square

London, E14

Asking Price £300,000

A fantastic studio apartment, located in this very popular South Quay portered development, Indecon Square and offered to the market chain-free.

**CHESTERTONS**



# Indecon Square

## London, E14

- Spacious Studio Apartment
- 364sq ft of Internal Living Space
- On-Site Porter/Concierge
- EWS1 - B1 Status
- South Quay DLR Station 0.4km
- Chain-free



A modern studio apartment in the popular South Quay development. The property comprises of an open plan, living-kitchen arrangement, spacious bathroom suite and a separate sleeping area set away from the main living space. Indecon Square benefits from a porter and is located walking distance from all of Canary Wharf's amenities.

Nearby amenities include a 24hr supermarket, a Tian Tian Chinese supermarket, the Canary Wharf Shopping Centre and various local amenities. The property is also within close proximity to Canary Wharf Jubilee Line station & South Quay DLR station, as well as the Elizabeth Line station.

Lease length - 978 years approx.  
 Service Charge - £3,187 pa. approx.  
 Ground Rent - £300 pa.

**Tenure:** Leasehold 978 years approx. remaining.  
**Service Charge:** £3187 pa. approx.  
**Ground Rent:** £300 pa  
**Local Authority:** Tower Hamlets  
**Council Tax Band:** D

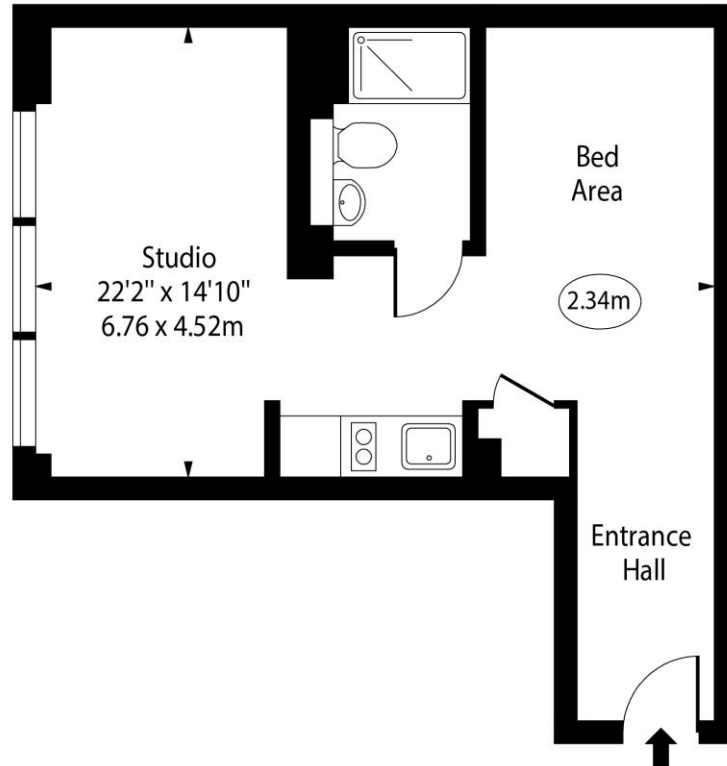
Score	Energy rating	Current	Potential
92+	A		
81-91	B	82 B	82 B
69-80	C		
55-68	D		
39-54	E		
21-38	F		
1-20	G		

### *Chestertons Canary Wharf & Greenwich Sales*

Harbour Island  
 28 Harbour Exchange Square  
 London  
 E14 9GE  
 canarywharf@chestertons.co.uk  
 020 7510 8300  
 chestertons.co.uk

# Indecon Square, E14

○ - Ceiling Height



First Floor

Approx Gross Internal Area      364 Sq Ft - 33.82 Sq M

Every attempt has been made to ensure the accuracy of the floor plan shown. However, all measurements, fixtures, fittings, and data shown are approximate interpretations and for illustrative purposes only. Measured according to the RICS. Not To Scale.

[www.goldlens.co.uk](http://www.goldlens.co.uk)

Ref. No. 031194E

