



Brompton Road, SW3

£923 Per week

An elegant two-bedroom apartment located within a well-maintained residential development. The property comprises two generously proportioned double bedrooms and a contemporary bathroom. Presented fully furnished, it further benefits from lift access and the convenience of a porter service.

The property enjoys a highly convenient location, situated approximately 0.2 miles from South Kensington Underground Station and 0.3 miles from Hyde Park, Knightsbridge, and Sloane Avenue.

Features

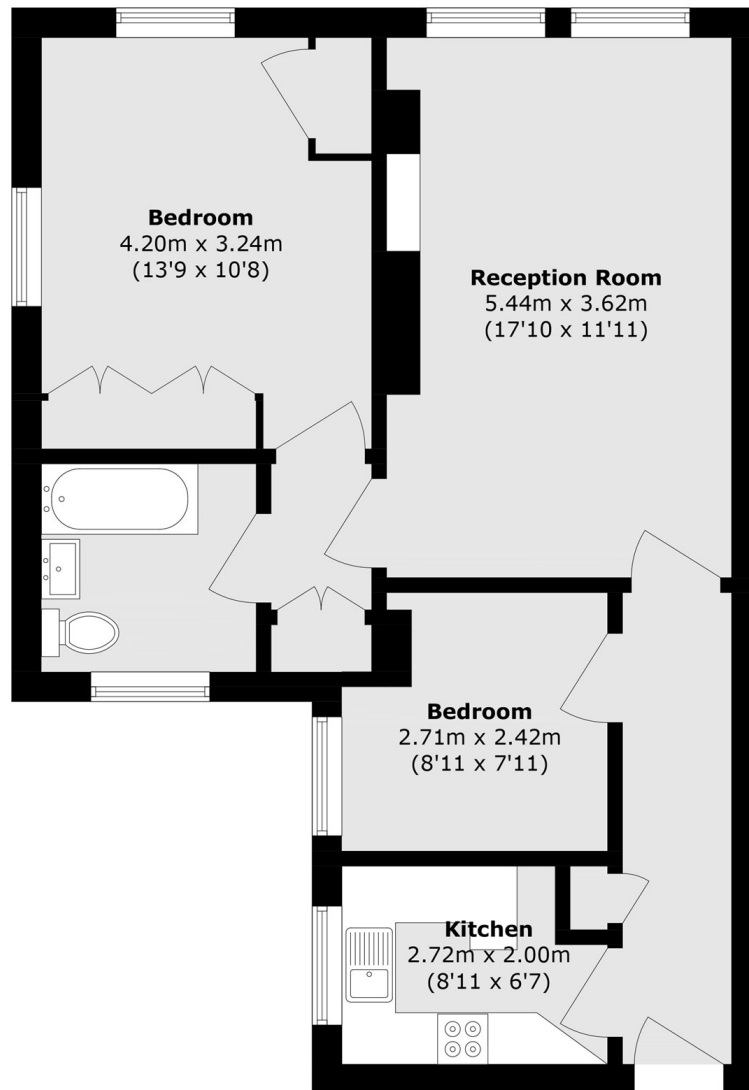
- Two Double Bedrooms
- One Bathroom
- Portered Building
- Excellent Location
- Lift Access
- Large Living Room
- Separate Kitchen



Brompton Road, SW3



Brompton Road, London, SW3



Second Floor

Total area (approx.): 60.1 sq. m (646.9 sq. ft)