



Denbigh Street, SW1V

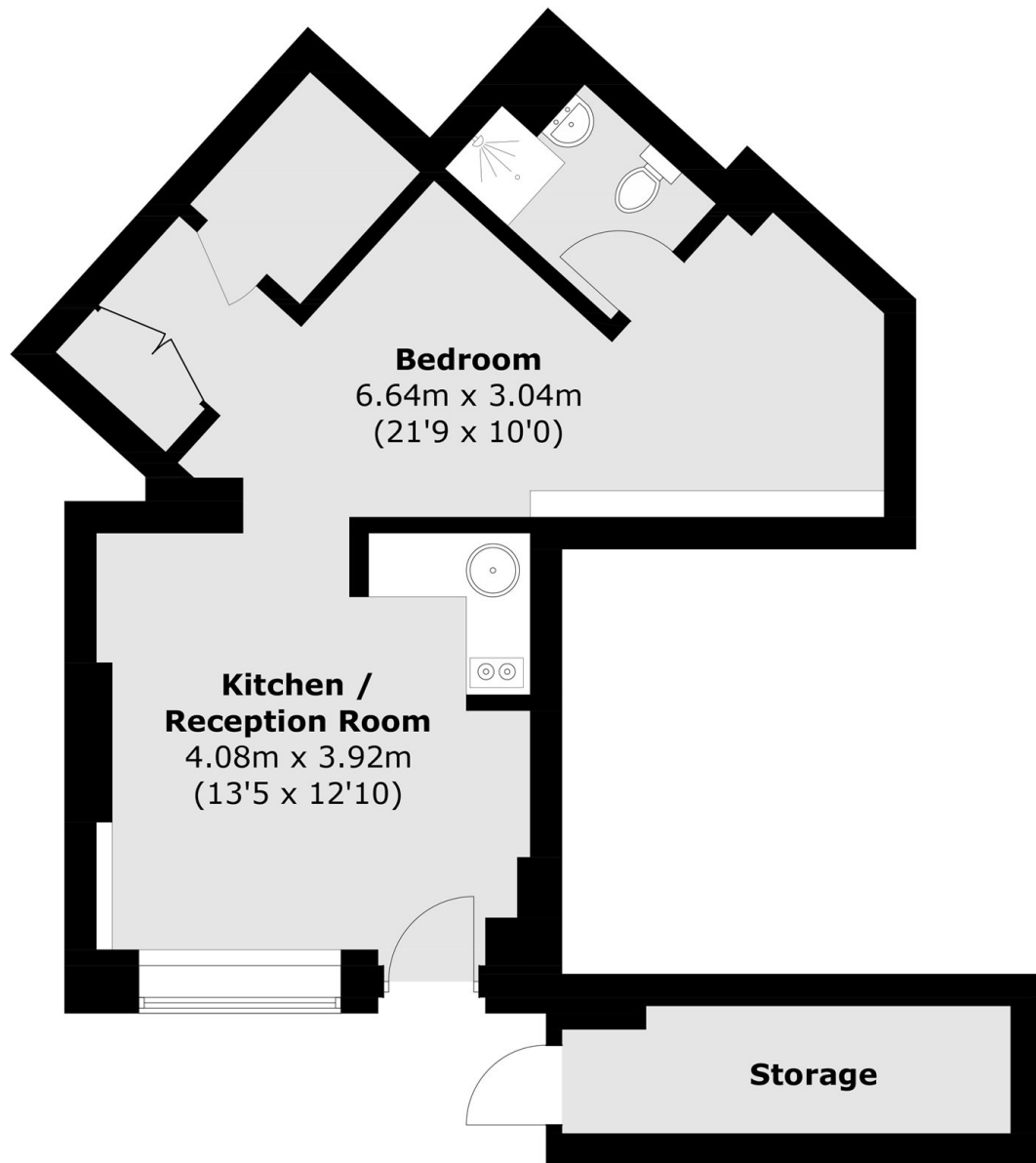
£426 Per week

A well proportioned and beautifully presented studio apartment located on the lower ground level. This apartment benefits from ample external storage and its own private entrance.

Features

Close To Transport Links
Own Private Entrance
Demised Storage
Pimlico Grid

Denbigh Street,
London, SW1V



Total area (approx.): 40.4 sq. m (434.8 sq. ft)
Storage (approx.): 5.1 sq. m (54.9 sq. ft)

Dexters

Pimlico
42 Denbigh Street
London
SW1V 2ER
Lettings
020 7976 5200

Energy Rating: . We aim to make our particulars both accurate and reliable. However they are not guaranteed; nor do they form part of an offer or contract. If you require clarification on any points then please contact us, especially if you're traveling some distance to view. Please note that appliances and heating systems have not been tested and therefore no warranties can be given as to their good working order.

 **RICS** | Regulated
Estate Agent
and Letting Agent

[dexters.co.uk](https://www.dexters.co.uk)