



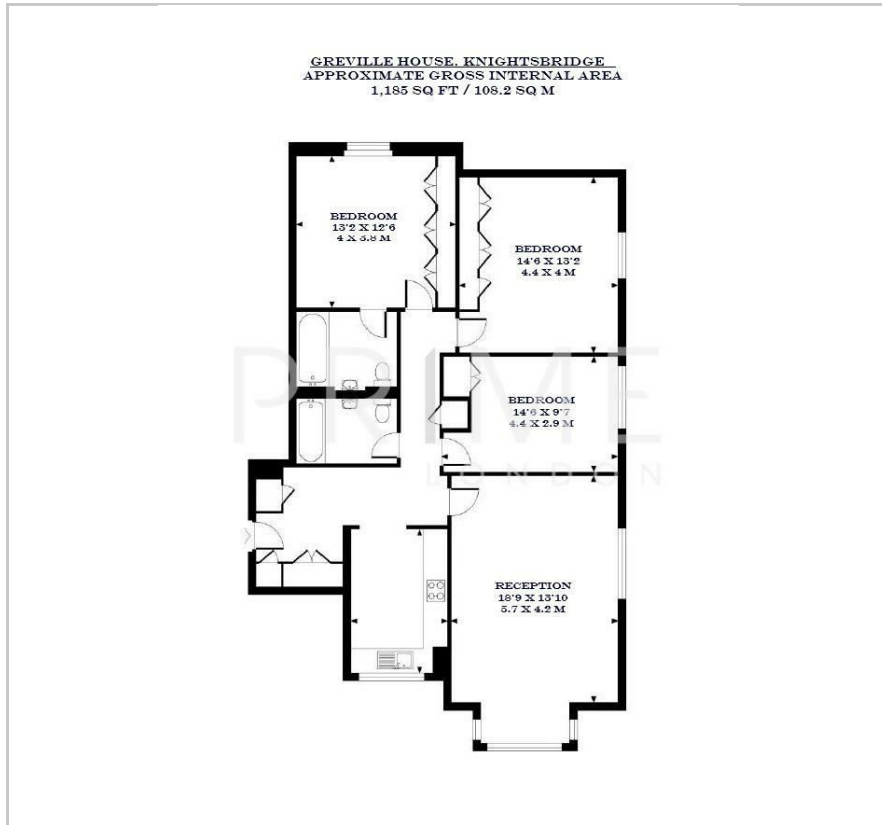
Greville House

Kinnerton Street, Knightsbridge, SW1X 8EY

£1,510 Per Week



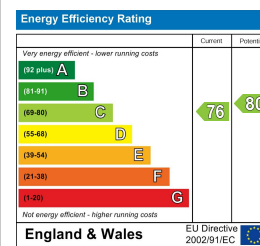
Floor Plan



Area Map



Energy Efficiency Graph



Viewing

By appointment. Contact us on 0207 052 1075 if you wish to arrange a viewing appointment for this property, or require further information.

- Three bedroom apartment ▪ 1,185 sq ft (108.2 sqm)
- Fully furnished to a high standard ▪ Ample storage in all bedrooms
- Located moments away from Hyde Park ▪ Building porter and lift access



This modern three bedroom apartment, perfectly positioned in the prestigious heart of Knightsbridge in Greville House, is available for lease through Prime London.

Offering 1,185 sq ft (108.2 sqm) of thoughtfully designed living space, the property features a generous reception room bathed in natural light, providing a versatile layout. The rest of the accommodation is finished to a good standard, comprising three well-proportioned double bedrooms, all featuring built-in storage, and two stylish bathrooms, including a well-appointed en suite.

Situated within a highly sought-after portered development, Greville House, the property benefits from convenient lift access and a secure, well-managed environment.

Greville House enjoys an enviable location in one of London's most exclusive neighborhoods. Residents are just a short stroll from the picturesque Hyde Park, while the world-renowned shopping and dining experiences of Brompton Road and Harrods are within easy reach.

The property is also conveniently positioned for excellent transport links, with both Knightsbridge and Hyde Park Corner tube stations just a few minutes away, ensuring effortless access across the city.



These particulars, whilst believed to be accurate are set out as a general outline only for guidance and do not constitute any part of an offer or contract. Intending purchasers should not rely on them as statements of representation of fact, but must satisfy themselves by inspection or otherwise as to their accuracy. No person in this firm's employment has the authority to make or give any representation or warranty in respect of the property.