



Mildmay Road, Ipswich,  
£200,000

GRACE ESTATE AGENTS are delighted to present this two-bedroom semi-detached home, situated in the popular IP3 area of Ipswich, ideal for first-time buyers, small families, or investors.

The property features two generously sized double bedrooms, providing ample space for relaxation and storage. On the ground floor, you'll find a conveniently located bathroom and WC.

Externally, the home benefits from off-road parking for two vehicles, a highly desirable feature in this area. To the rear, a spacious garden offers excellent potential for outdoor entertaining, gardening, or simply enjoying the open space.

Combining practicality with a sought-after location, this property presents a fantastic opportunity to secure a home in a well-connected part of Ipswich.

### Entrance Hall

Wood style flooring, access to the lounge and stairs to the first floor.

### Lounge

13'8" x 12'5" (4.18 x 3.81)  
Double glazed window to front aspect, wood style flooring, radiator, access to the entrance hall and kitchen.

### Kitchen

15'6" x 8'3" (4.73 x 2.53)  
Wood style flooring, radiator, double glazed window to rear aspect, matching eye level and base units with work tops over. Access to the bathroom and WC. Space for washing machine, dryer, fridge freezer and single oven.

### Bathroom

5'5" x 5'6" (1.66 x 1.69)  
Panelled bath with shower on riser rail, double glazed window to side aspect, hand wash basin and wood style flooring.





### WC

4'9" x 2'11" (1.47 x 0.90)  
Low level WC, radiator, double glazed window to side aspect and wood style flooring.

### Bedroom One

12'9" x 10'6" (3.89 x 3.22)  
Double glazed to front aspect, storage cupboard and radiator.

### Bedroom Two

13'9" x 8'4" (4.20 x 2.55)  
Double glazed window to rear aspect, radiator and wood style flooring.

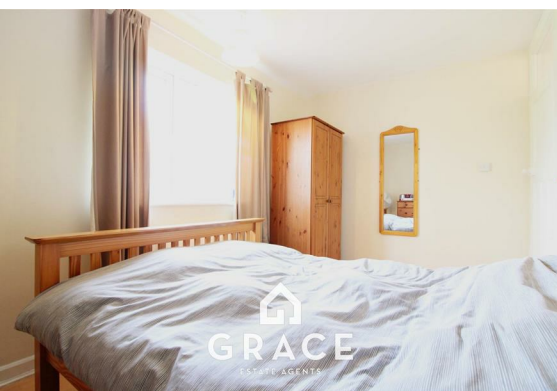
### Outside

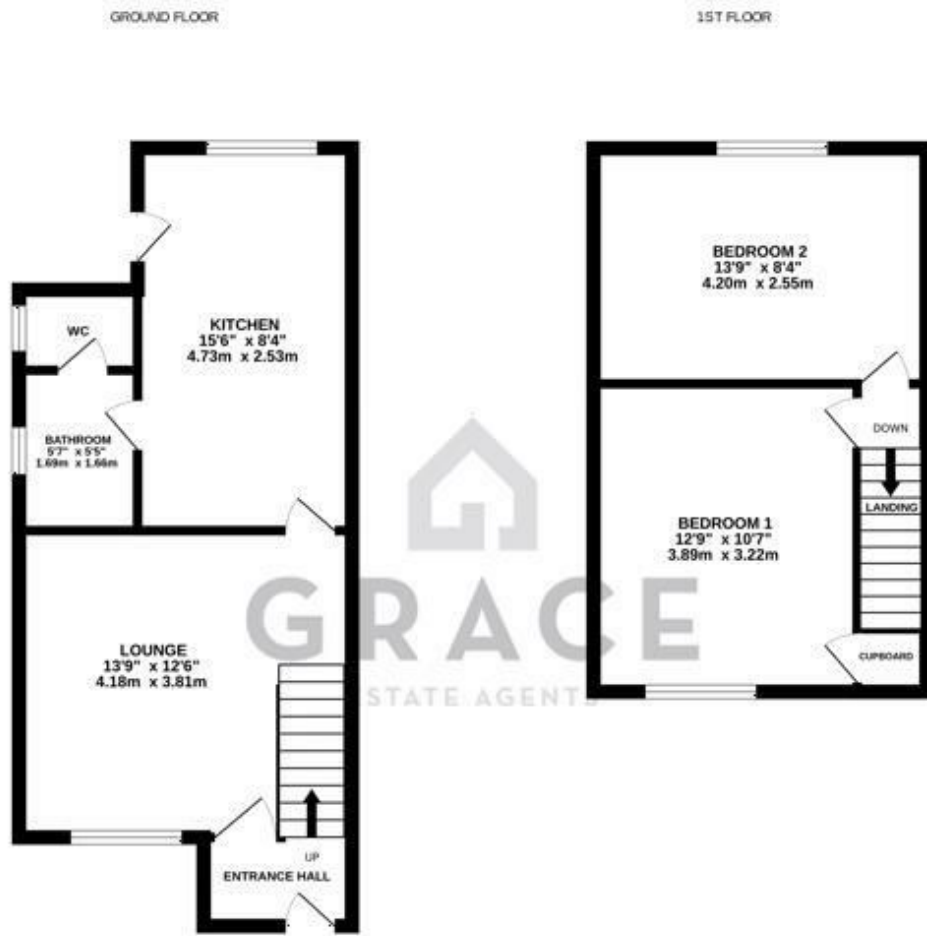
Patio from the rear of the house leading to a lawned area, fenced boundaries and side access to the front of the property.

Front garden - off road parking two cars.

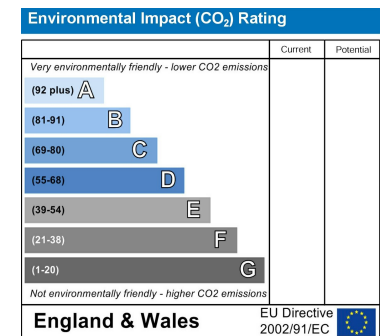
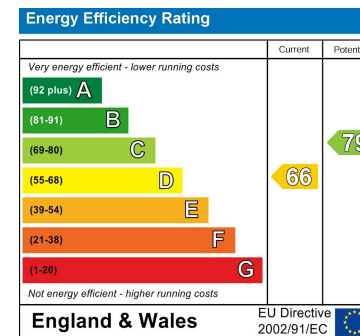
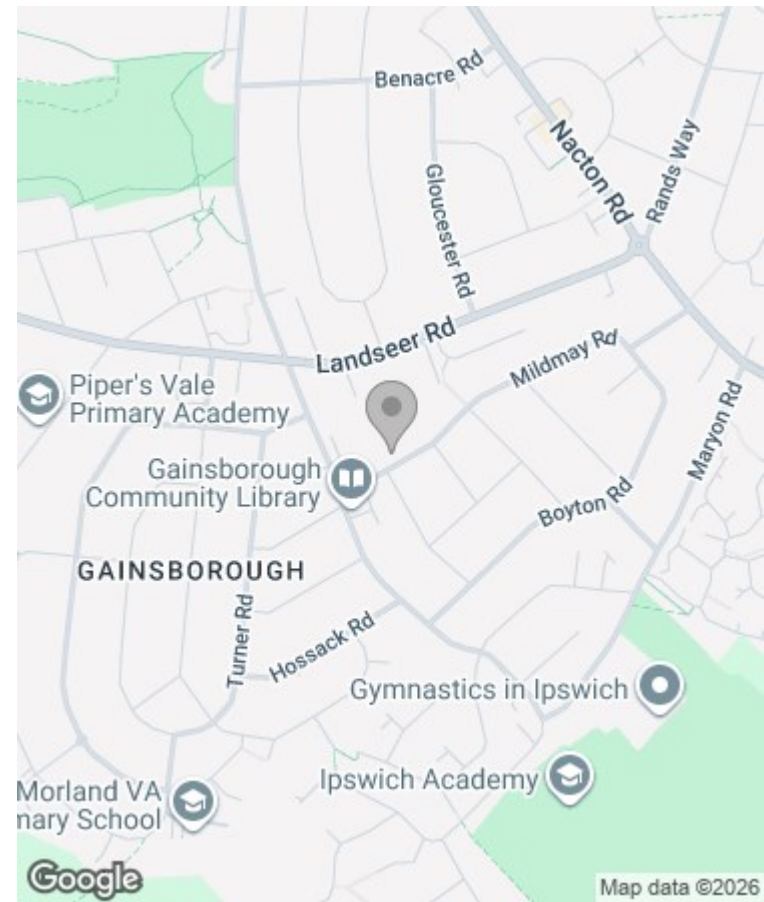
### EPC

Please ask the marketing agent for EPC details.





Whilst every attempt has been made to ensure the accuracy of the floorplan contained here, measurements of areas, volumes, rooms and any other items are approximate and no responsibility is taken for any error, omission or mis-statement. This plan is for illustrative purposes only and should be used as a guide for any proposed purchase. The services, contents and appliances shown here are not shown to scale and no guarantee as to their operability or efficiency can be given. Home 2011 Interiors ©2024



## Viewing

Please contact our Grace Estate Agents Office on 01473 747728 if you wish to arrange a viewing appointment for this property or require further information.

These particulars, whilst believed to be accurate are set out as a general outline only for guidance and do not constitute any part of an offer or contract. Intending purchasers should not rely on them as statements of representation of fact, but must satisfy themselves by inspection or otherwise as to their accuracy. No person in this firm's employment has the authority to make or give any representation or warranty in respect of the property.