

MUNDAY'S

Surrey Road, Nunhead

£599,950



Bright and beautiful two bedroom, two reception, first floor Victorian conversion flat of approximately 790 square feet, with a smart and private garden and its own entrance. Chain free.

Your new home sits in a quaint, quiet Nunhead pocket of smart and almost-exclusively late-Victorian homes, very close to Peckham Rye Park and Common's 113 acres. Both Nunhead and Brockley stations are a pleasant 15 minute stroll away.

Munday's Estate Agents Ltd.
2 Mary Boast Walk
London SE5 8SP
020 3318 8900

www.mundays.com

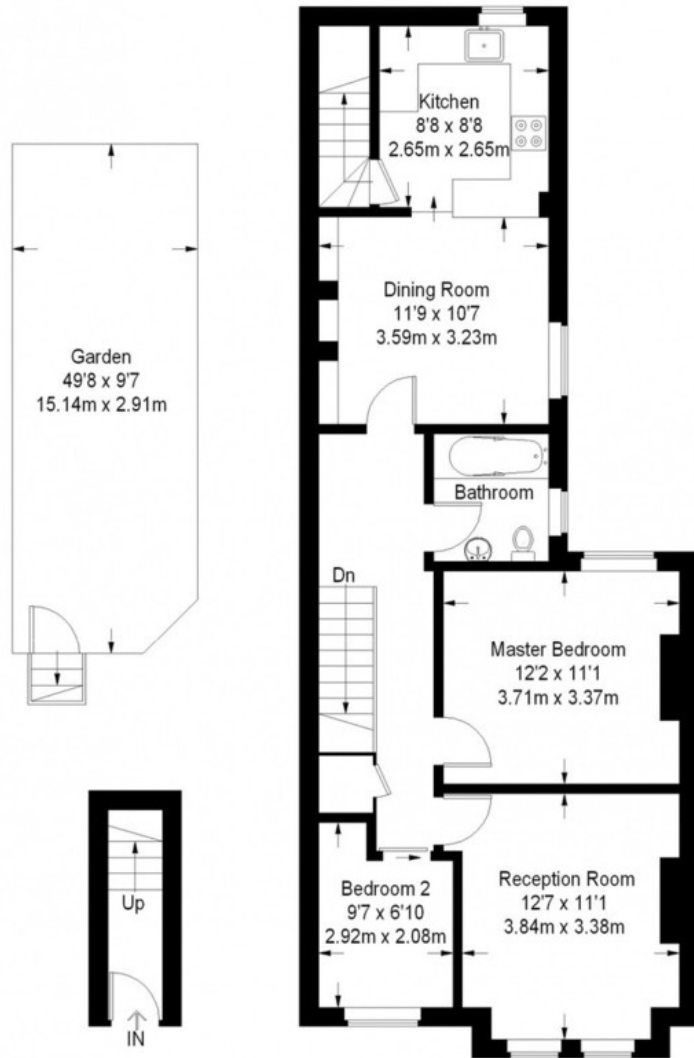
MUNDAY'S



Munday's Estate Agents Ltd.
2 Mary Boast Walk
London SE5 8SP
020 3318 8900

www.mundays.com

Surrey Road



Ground Floor
30 sq ft

First Floor
761 sq ft

Approximate Gross Internal Area
Ground Floor = 30 sq ft / 2.8 sq m
First Floor = 761 sq ft / 70.7 sq m
Total = 791 sq ft / 73.5 sq m

This plan is for layout guidance only. Not drawn to scale unless stated. Windows and door openings are approximate. Whilst every care is taken in the preparation of this plan, please check all dimensions, shapes and compass bearings before making any decisions reliant upon them. (ID305285)