



Silwood Street, SE16

£475,000

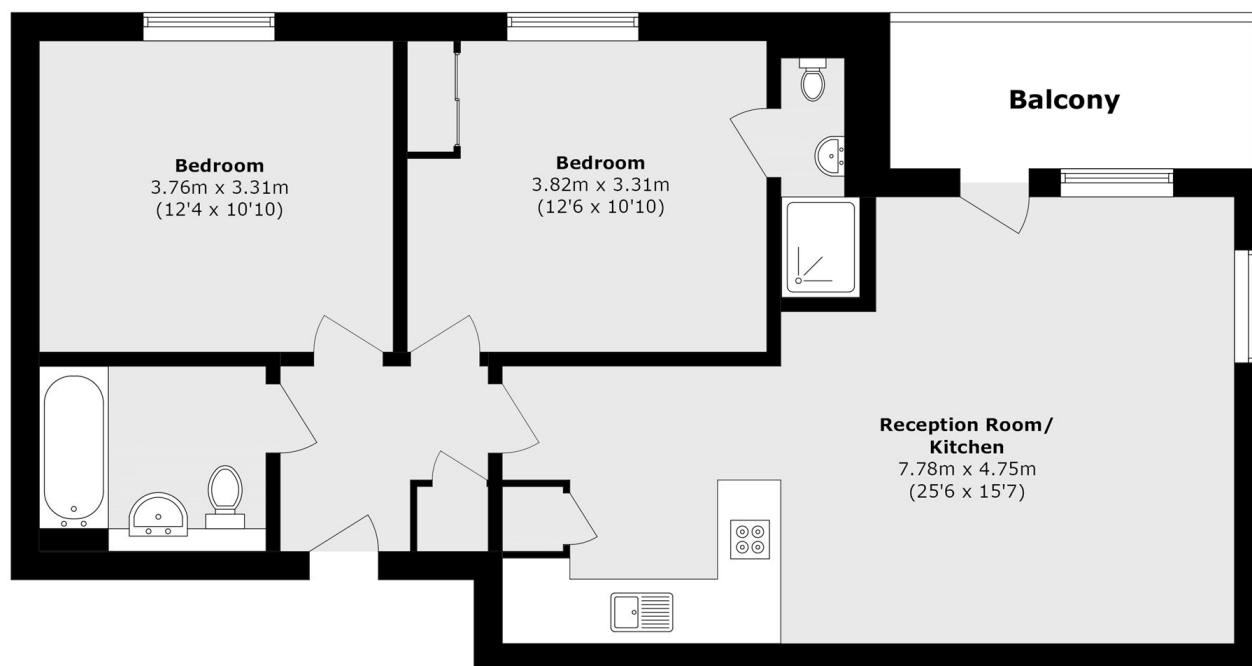
Situated on a quiet leafy street, this bright and airy two double bedroom flat is in excellent condition and boasts a large open plan kitchen living room, two bathrooms, ample storage and a private balcony.

Chamberlain Court is located only 0.4 miles from Surrey Quays station and 0.7 miles from Canada Water station offering excellent transport links to all of London. An abundance of shops cafés and restaurants are also close by.

Features

- Two Double Bedrooms
- Two Bathrooms
- Excellent Condition
- Fantastic Location
- Private Balcony
- Ample Storage

Silwood Street, London, SE16



Total area (approx.): 70.0 sq. m (753.4 sq. ft)

Balcony area (approx.): 6.0 sq. m (64.5 sq. ft)