



4 BEECH ESTATE SHILBOTTLE

£185,000

GUIDE
PRICE

AYRE
PROPERTY
SERVICES

01669 621312

ayrepropertieservices.co.uk

A detached bungalow on a generous plot, situated in an excellent position close to the entrance of Beech Estate. The property is immaculately presented throughout; the Accommodation comprises; Entrance Hall, Sitting Room, Kitchen, Utility, Bathroom and Two Bedrooms. There are wrap around gardens, vehicular access is from Ashfield Terrace, (opposite the First School), and leads to a generous driveway parking and lawned area, with external stores and shed. Situated approximately 2 miles south-west of the market town of Alnwick within easy reach of the A1 and the mainline railway station at Alnmouth. Northumberland's coastline is on the doorstep. Village facilities include local shop/takeaway, Post Office, village First School, Health Club & Spa, Public House and Restaurant.

Shilbottle

With a range of amenities just a short walk away, including a village shop, post office, pharmacy, primary school, leisure complex with swimming pool and gym, pub, café, takeaway, and community centre. The property also has excellent access to Alnwick (around 3 miles away), the A1, regular bus services, and Alnmouth railway station for wider regional and national connections.

Services

Mains electricity, water & drainage.
Gas Central Heating & Fully Double Glazed

Postcode

NE66 2UY

Local Authority

Northumberland County Council
Tel: 01670 627 000

Council Tax

Council Tax Band A - £1,623.22 2025/26

Tenure

Freehold

Title Numbers

ND64542

Viewing

Strictly by appointment with the selling agents.

EPC Rating

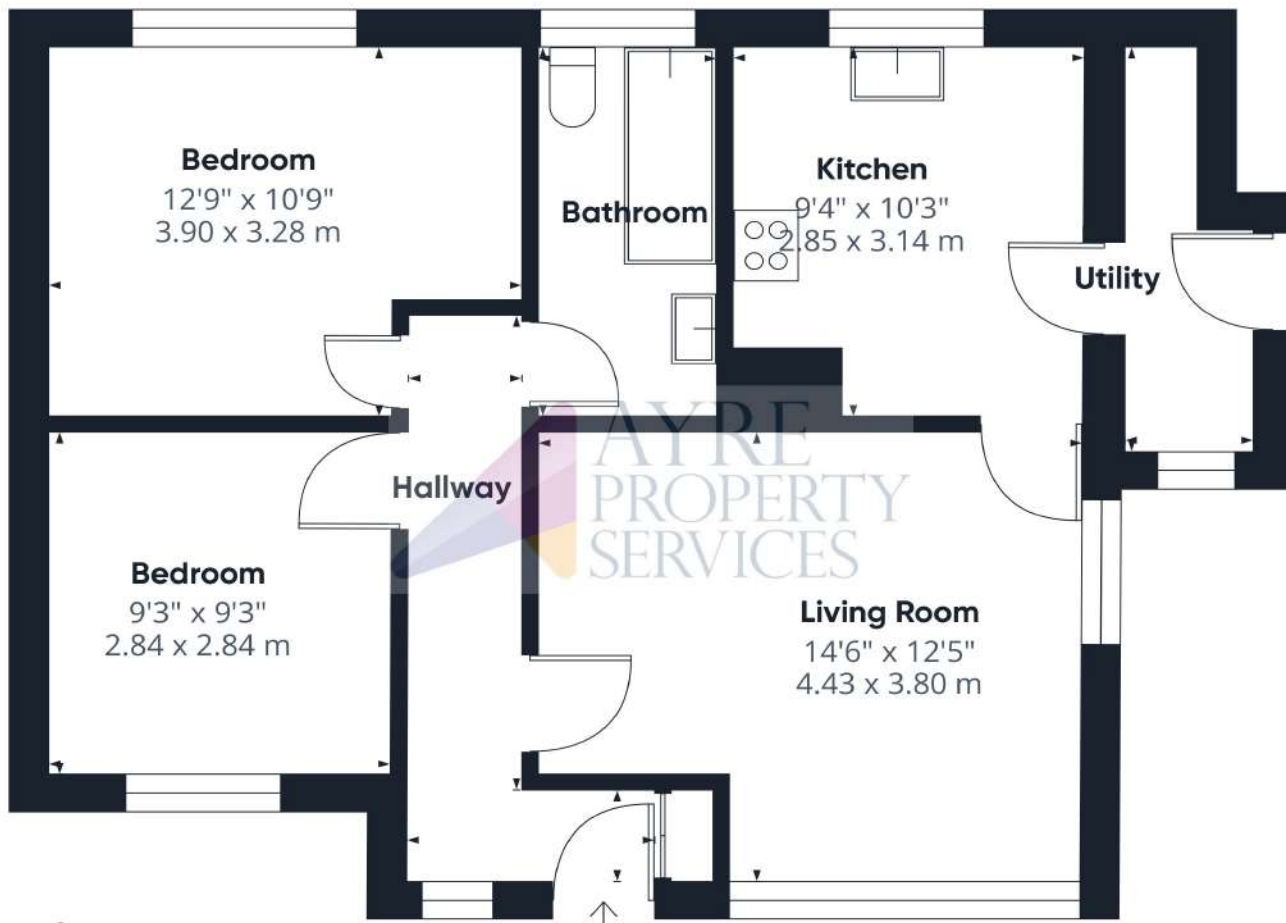
Current Rating - TBC

Full report available upon request.

Location

For detailed directions please contact the selling agent.





Approximate total area⁽¹⁾
623 ft²
57.9 m²

(1) Excluding balconies and terraces

Calculations reference the RICS IPMS 3C standard. Measurements are approximate and not to scale. This floor plan is intended for illustration only.

GIRAFFE360













