



Sidney Square, E1
£1,300,000



Sidney Square, E1

An impressive three bedroom, Grade II listed town house located in the heart of Whitechapel. Spread over four stories, this recently refurbished property, including a new roof, combines contemporary living with sought after period features. The house comprises a double reception room with fireplace, a separate dining room leading through to a contemporary galley kitchen with integrated appliances, two large double bedrooms, a third guest double bedroom and two luxury bathrooms.

Sidney Square is set within a convenient location between Stepney Green and Whitechapel. The area provides access to a wide array of bars, restaurants, boutique cafés and shopping venues as well as being very well connected with easy access to Whitechapel underground station (Elizabeth, District, Hammersmith & City and Overground lines) and Shadwell (Overground and DLR lines) for travel to the City, Canary Wharf, and Shadwell (Overground and DLR lines) for travel to the City, Canary Wharf, and beyond.

Features

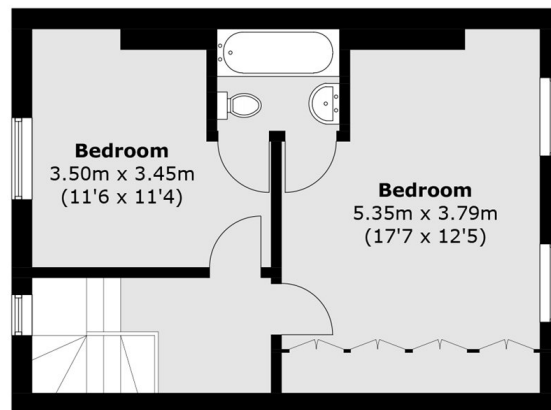
- Three Double Bedrooms
- Two Bathrooms
- Modern
- Period Features
- Private Garden
- Central Location



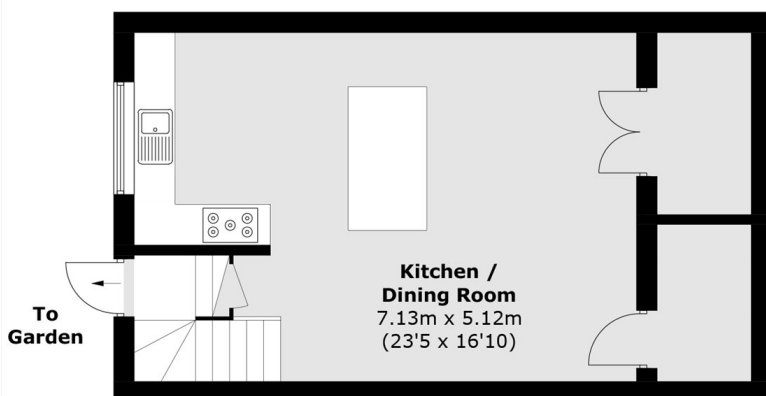
Sidney Square, London, E1



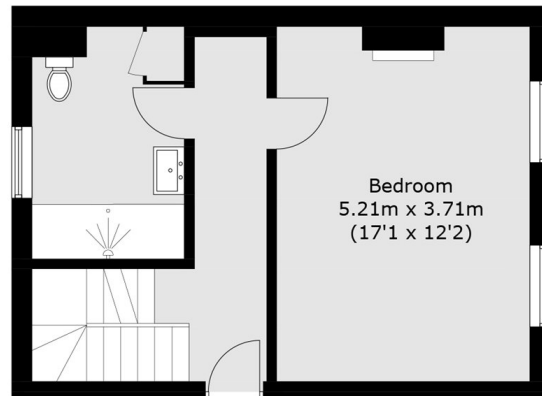
First Floor



Second Floor



Lower Ground Floor



Ground Floor

Total area (approx.): 164.3 sq. m (1768.4 sq. ft)