

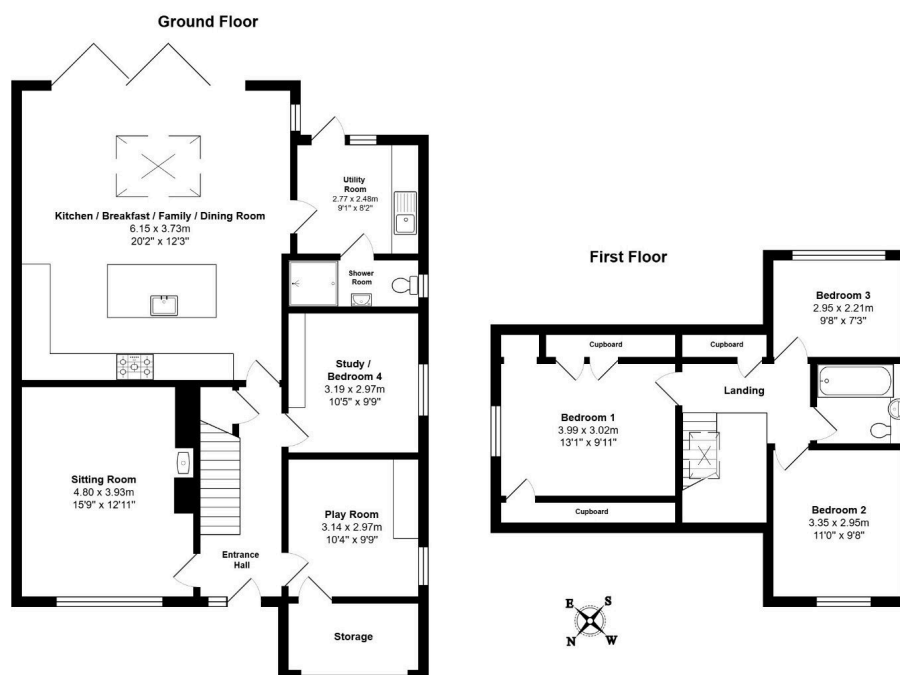
# Stepping Stones, Hemingford Grey, Huntingdon, PE28 9EL

Guide Price £625,000

3 1 4



- Extended And Much Improved Detached Property
- An Extended Refitted Kitchen/Breakfast/Family Room With Bi-fold Doors
- New Boiler and Fuse Board Installed By Current Owners
- Situated In Quiet Residential Area In Hemingford Grey
- Virtual tour available upon request
- Extensive Ground Floor Accommodation with Three Reception Rooms
- Three Additional Bedrooms Upstairs And Refitted Family Bathroom
- South-Easterly Facing Rear Garden With Lawn And Patio Area
- Village South Of St Ives With Easy Access To Guided Bus Way
- EPC Rating: D/61



This much improved detached home showcases what dedicated owners can achieve with vision and investment. The impressive extended kitchen family dining room with bifold doors opening to the south-easterly facing garden creates spectacular living space, whilst comprehensive improvements throughout mean everything's been properly sorted in this sought-after village location.