

£1,845 pcm

Station Road, Sidcup, Kent, DA15 7AH



- LUXURY 2 BEDROOM 3RD FLOOR APARTMENT
- GAS CENTRAL HEATING, DOUBLE GLAZING, LIFT, VIDEO PHONE ENTRY & OSP
- SPACIOUS LOUNGE WHICH IS OPEN PLAN TO THE KITCHEN AREA
- MODERN KITCHEN WITH BUILT IN APPLIANCES
- 2 X GOOD SIZE DOUBLE BEDROOMS (FITTED WARDROBES TO MASTER)
- LUXURY BATHROOM WITH OVERBATH SHOWER
- ALLOCATED PARKING SPACE & COMMUNAL ROOF TERRACE
- CLOSE TO ALL LOCAL AMENITIES

To view all our homes: www.drewery.co.uk





LUXURY 2 BEDROOM 3RD FLOOR APARTMENT: UNFURNISHED

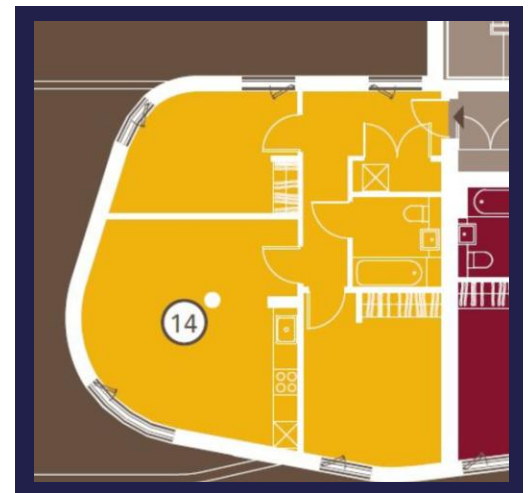
Drewery Property Consultants are pleased to offer for rental this 2 bedroom 3rd floor luxury apartment in 'The Fold' development. Situated close to all local amenities including: schools, shops, high street, bus route and Sidcup mainline train station.

The property benefits from gas central heating, double glazing, lift, video phone entry system, neutral decor and has been finished to a very high standard throughout.

The accommodation comprises: Entrance hall. Storage cupboard with washer / dryer. Spacious lounge with wood laminate flooring and open plan kitchen area. Modern kitchen fitted with a range of modern wall and base units, work surfaces, stainless steel sink, fridge / freezer and dishwasher. 2 x good size double bedrooms (both having fitted wardrobes). Luxury bathroom with hand basin, bath with overbath shower, heated towel rail and W.C. Externally there is 1 x allocated parking space and a communal roof terrace with views of London and Kent.

Available mid August.

Restrictions: no smokers, students or sharers.



Energy Efficiency Rating C.
(76/76) EIR 0/0

If you would like to view please contact Drewery Property Consultants on **020 8269 6600**

These particulars are intended to give a fair description of the property but their accuracy cannot be guaranteed. Intending tenants should not rely on them as statements of representation of fact, but must satisfy themselves by inspection or otherwise as to their accuracy. All measurements quoted are approximate. None of the appliances/services have been tested by ourselves.

*Important - Admin fees apply per applicant. Please visit our website www.drewery.co.uk (information for tenants - Fees & other costs) or contact our staff.