



PCM

**£2,400 PCM**

**Strype Street**

London, E1 7LG

Set on a quiet turning just a few moments walk from the City is this this good size 1st floor 2 double bedroom apartment.

The property features a bright reception room with a modern open planed kitchen, contemporary bathroom and 2 good size double bedrooms.

The property has wooden floors and sash windows as well as a communal garden area. The property is located just a short walk from the City and Spitalfield Market with Liverpool Street and Aldgate East Stations both close by.

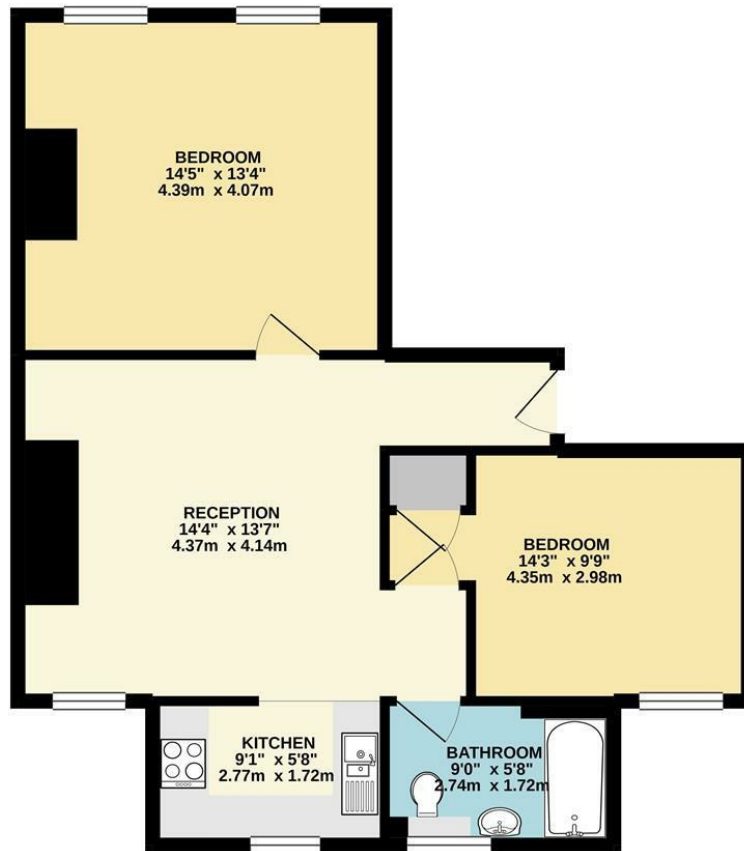
The property is available from the start of August.

Offered part furnished.  
5 weeks deposit: £2,769  
Council tax: Band D





631 sq.ft. (58.6 sq.m.) approx.



TOTAL FLOOR AREA : 631 sq.ft. (58.6 sq.m.) approx.

Whilst every attempt has been made to ensure the accuracy of the floorplan contained here, measurements of doors, windows, rooms and any other items are approximate and no responsibility is taken for any error, omission or mis-statement. This plan is for illustrative purposes only and should be used as such by any prospective purchaser. The services, systems and appliances shown have not been tested and no guarantee as to their operability or efficiency can be given.  
Made with Metropix ©2020

Energy Efficiency Rating		Current	Potential
Very energy efficient - lower running costs			
(92 plus) <b>A</b>			
(81-91) <b>B</b>			
(69-80) <b>C</b>			
(55-68) <b>D</b>			
(39-54) <b>E</b>		49	55
(21-38) <b>F</b>			
(1-20) <b>G</b>			
Not energy efficient - higher running costs			
<b>England &amp; Wales</b>		EU Directive 2002/91/EC	

Agents Note: Whilst every care has been taken to prepare these particulars, they are for guidance purposes only. All measurements are approximate and are for general guidance purposes only and whilst every care has been taken to ensure their accuracy, they should not be relied upon and potential buyers/tenants are advised to recheck the measurements

**OFFICE ADDRESS**  
88 Cheshire Street  
London  
E2 6EH

**OFFICE DETAILS**  
0207 739 6969  
info@peachproperties.com  
www.peachproperties.com