



# Commercial Street, London E1

Price £495 per week - Furnished







## Description

A stunning new studio apartment in the brand new Cityscape development.

This luxury studio apartment is situated on the 1st floor and offers approximately 417 sq ft of living space with a southerly aspect. The spacious studio apartment boasts a well sized open plan living area, sleeping area with fitted wardrobes, fully fitted kitchen with Siemens appliances and engineered stone worktops, contemporary bathroom with porcelain and glass tiling, wood flooring. The apartment benefits from floor to ceiling windows, with a generous sized balcony, maximizing natural light and views.

The development is situated next Aldgate East Station and a short walk from the City of London. Located in Zone 1, the development is close to Aldgate (0.3 miles) and Liverpool Street (0.6 miles) stations. Residents also benefit from 24 hour concierge service and on site gymnasium.

Council tax band: D. Rent is payable on a monthly basis, and you may be required to pay more than a month's rent in advance for tenancies with annual rents exceeding £100,000. You will be required to pay a 1 week holding deposit following a successful offer. Tenancies with annual rents up to £50,000 will require a 5 weeks' security deposit, while those exceeding this threshold will require a 6 weeks' deposit. Utility bills, council tax, telephone line and broadband are not included in the rent. As well as paying the rent, you may also be required to make some additional permitted payments. If your tenancy does not qualify as an APT, additional fees may apply. Please visit [jll.co.uk/fees](http://jll.co.uk/fees) for details of fees that may be payable when renting a property. To check broadband and mobile phone coverage please visit Ofcom here [ofcom.org.uk/phones-telecoms-and-internet/advice-for-consumers/advice/ofcom-checker](http://ofcom.org.uk/phones-telecoms-and-internet/advice-for-consumers/advice/ofcom-checker)

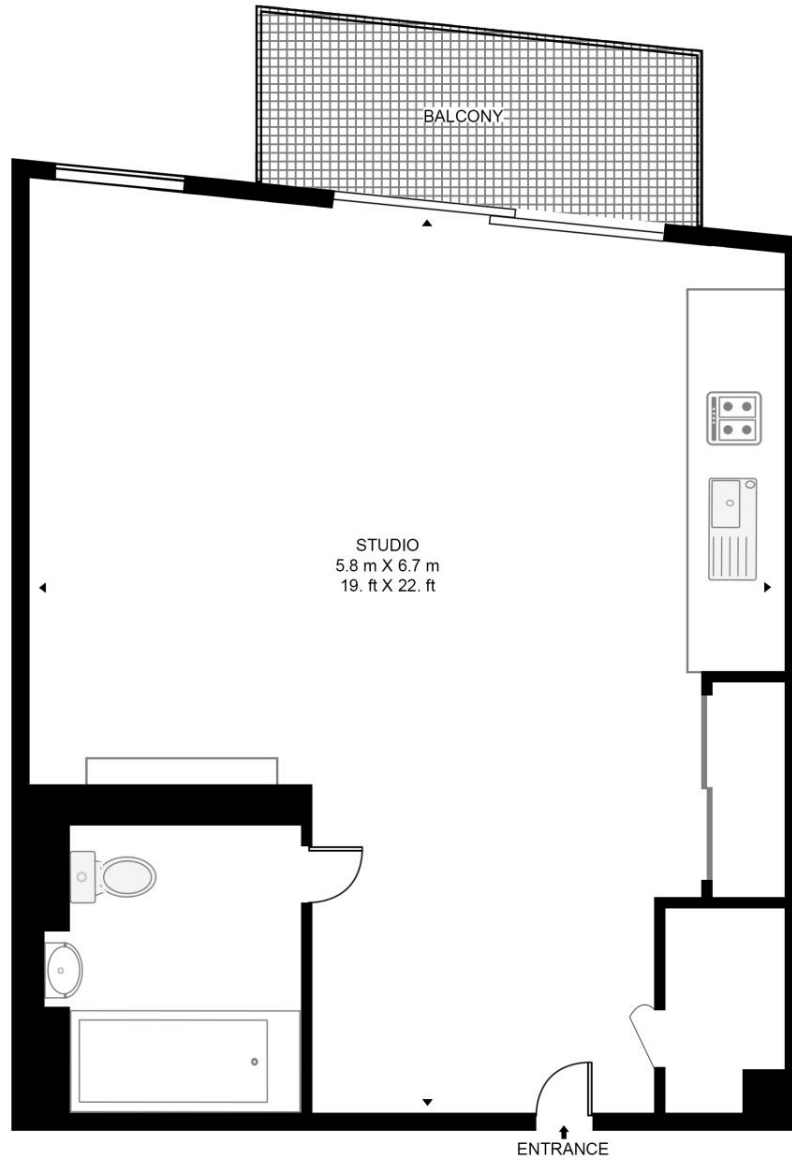
- Studio
- 1 Bathroom
- 1st Floor
- Balcony
- On-site leisure facilities
- 24 hour concierge
- 0.3 miles from Aldgate Station
- Approx. 417 sq ft (38.7 sq m)
- Leasehold
- EPC: B

# Floorplan

417 sq ft | 39 sq m

## KENSINGTON APARTMENTS

APPROXIMATE GROSS INTERNAL FLOOR AREA 414 SQ.FT (38.5 SQ.M)



FIRST FLOOR



This floor plan has been defined by the RICS Code of Measurement. This floor plan and all others are for approximate representative purposes only and upon usage is agreed to as such by the client.  
WWW: [hdvirtualart.com](http://hdvirtualart.com) | TEL: 0203.974.1567 | EMAIL: [info@hdvirtualart.com](mailto:info@hdvirtualart.com)

City  
25 Walbrook The Walbrook  
Building,  
London EC4N 8AF  
+4420 7337 4000

*Urban living, your way.*

[jll.co.uk/residential](http://jll.co.uk/residential)

© 2019 Jones Lang LaSalle IP, Inc. All rights reserved. All information contained herein is from sources deemed reliable; however, no representation or warranty is made to the accuracy thereof.

