





Rose & Crown Court, Stanton, Suffolk

£2,000 Per month

 4
  2
  2
  B

Nestled in the charming area of Stanton, this stunning four-bedroom detached house offers a perfect blend of modern living and comfort. This new build boasts a generous 1,432 square feet of well-designed space, making it an ideal family home.

As you enter, you are greeted by two spacious reception rooms, perfect for entertaining guests or enjoying quiet family evenings. The ground floor features underfloor heating, ensuring a warm and inviting atmosphere throughout the year. The heart of the home is undoubtedly the stylish kitchen, which seamlessly connects to the living areas, creating an open and airy feel.

The property comprises of three double bedrooms and one single bedroom, providing ample space for family members or guests. The master bedroom is a true retreat, complete with an en-suite bathroom for added privacy and convenience.

The driveway has space for up to four vehicles, a rare find in many modern homes. The property benefits from underfloor heating on the ground floor powered by a heat pump system which is not only energy-efficient but also contributes to a comfortable living environment.

With a New Build Warranty in place, you can rest assured this property is built to the highest standards. This delightful home in Stanton is perfect for those seeking a contemporary lifestyle in a peaceful setting. Don't miss the opportunity to rent this exceptional property.

- Four Bedroom, Detached House
- BRAND NEW
- 10 Year Warranty
- Integrated White Goods
- Freshly Laid Lawn and Patio
- Three Double Bedrooms and One Single
- Downstairs Cloakroom
- Three Piece Suite Bathroom
- Master Bedroom with En-Suite
- Large Driveway

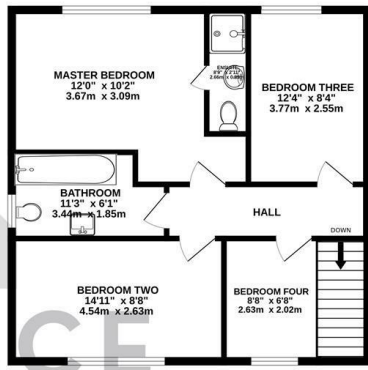
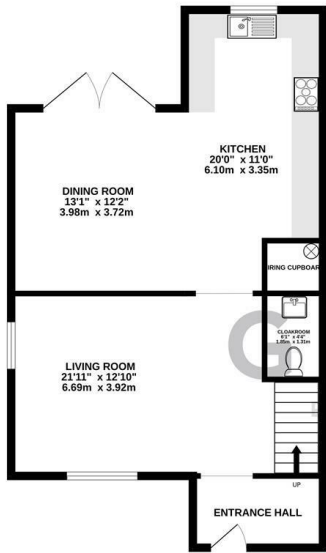
£2,000 Per month

Viewing

Please contact our Grace Estate Agents Office on 01473 747728 if you wish to arrange a viewing appointment for this property or require further information.

GROUND FLOOR
692 sq.ft. (63.4 sq.m.) approx.

1ST FLOOR
619 sq.ft. (57.5 sq.m.) approx.



GRACE
STATE AGENTS



TOTAL FLOOR AREA: 1301 sq.ft. (120.9 sq.m.) approx.
While every attempt has been made to ensure the accuracy of the floorplan contained herein, measurements of doors, windows, rooms and any other items are approximate and no responsibility is taken for any error, omission or mis-statement. This plan is for illustrative purposes only and should be used as such by any prospective purchaser. The services, systems and appliances shown have not been tested and no guarantee as to their operability or efficiency can be given.
Made with Metropix i2025

Energy Efficiency Rating		Current	Potential
Very energy efficient - lower running costs			
(92 plus) A			
(81-91) B			
(69-80) C			
(55-68) D			
(39-54) E			
(21-38) F			
(1-20) G			
Not energy efficient - higher running costs			
		85	
England & Wales		EU Directive 2002/91/EC	

Environmental Impact (CO ₂) Rating		Current	Potential
Very environmentally friendly - lower CO ₂ emissions			
(92 plus) A			
(81-91) B			
(69-80) C			
(55-68) D			
(39-54) E			
(21-38) F			
(1-20) G			
Not environmentally friendly - higher CO ₂ emissions			
England & Wales		EU Directive 2002/91/EC	



These particulars, whilst believed to be accurate are set out as a general outline only for guidance and do not constitute any part of an offer or contract. Intending purchasers should not rely on them as statements of representation of fact, but must satisfy themselves by inspection or otherwise as to their accuracy. No person in this firm's employment has the authority to make or give any representation or warranty in respect of the property.