



Abercrombie Street
London, SW11

CHESTERTONS





A stunning four-bedroom family home available on a quiet street in Battersea.

The house is exceptionally decorated throughout and benefits from a double reception room leading to a spacious kitchen with room for dining, and a private south facing garden. Upstairs boasts four double bedroom and two bathrooms including an en-suite in the top bedroom. Further advantages of the property include a downstairs utility/WC and a south facing terrace which you have access through via one of the bedrooms which is beautifully decorated to double up as a study.

This immaculate house is located a short walk from Clapham Junction and has easy links to the Kings Road and Sloane Square. Its close proximity to Battersea Park and the newly renovated Battersea Power Station and associated tube allows access into the City.

- Furnished or Unfurnished
- South Facing Garden
- Two Bathrooms
- Additional WC/Utility
- Hard Floor Throughout
- Quiet Street

£5,000 pcm

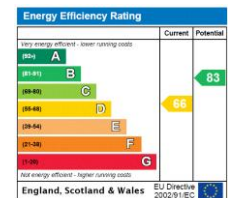
Additional tenant charges apply (fees apply to non-AST tenancies only)

Tenancy Agreement Fee: £300

References per Tenant/Guarantor: £60

Inventory check (approx. £100 – £250 inc. VAT)

chestertons.co.uk/property-to-rent/applicable-fees



Minimum Term: 12 months
Deposit Required: £6,923.08
Local Authority: London Borough of Wandsworth
Council Tax Band: F
EPC Rating: D
Furnished, Part Furnished, Unfurnished

Chestertons Battersea Park & Nine Elms Lettings

62-64 Battersea Bridge Road

London

SW11 3AG

batterseapark@chestertons.co.uk

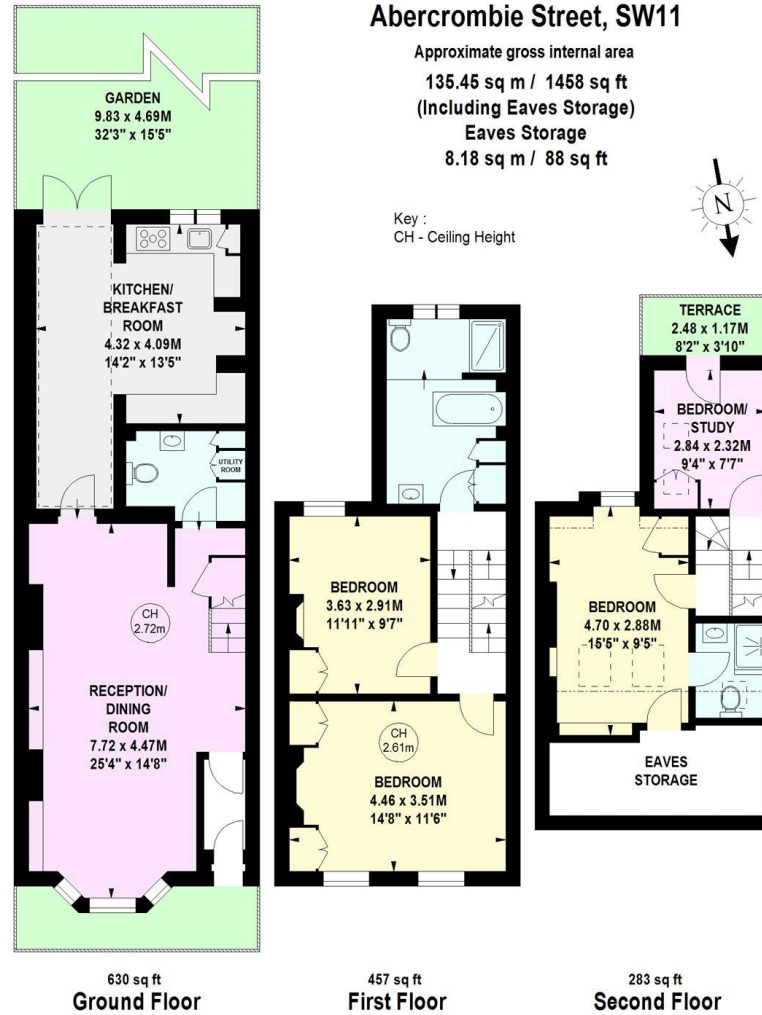
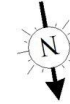
02030408269

chestertons.co.uk

Abercrombie Street, SW11

Approximate gross internal area
135.45 sq m / 1458 sq ft
 (Including Eaves Storage)
 Eaves Storage
8.18 sq m / 88 sq ft

Key :
 CH - Ceiling Height



This floor plan is a representation for guidance purposes only, not for valuation.
 Any figure is approximate and must not be relied on as a statement of fact.
 Copyright of Wyatt Dixon Homes



Chesterton UK Services Limited trading as Chestertons for themselves and for the vendor of this property whose agents they are, give notice that (i) these particulars do not constitute any part of an offer or contract, (ii) all statements contained within these particulars are made without responsibility on the part of Chestertons or the vendor, (iii) whilst made in good faith, none of the statements contained within these particulars are to be relied upon as a statement or representation of fact, (iv) any intending purchasers must satisfy themselves by inspection or otherwise as to the correctness of each of the statements contained within these particulars, (v) the vendor does not make or give either Chestertons or any person in their employment any authority to make or give representation or warranty whatsoever in relation to this property. Wide angle lenses may be used. ©Copyright Chestertons | Chesterton Global Ltd | Registered Office 40 Connaught Street, Hyde Park, London W2 2AB Registered Company Number 05334580.



This paper is
 100% recyclable