

Flat 2 291 High Street

Epping, Essex

Council Tax band: C

Tenure: Leasehold

- CHAIN FREE
- LUXURY DUPLEX
- MODERN SHOWER ROOM
- HIGH STREET LOCATION
- GATED SECURITY ENTRY SYSTEM
- EN-SUITE BATHROOM
- BESPOKE FITTED KITCHEN



Gated Entry

Communal Entrance

Front Door

Entrance Hall

Open Plan Living

18' 8" x 17' 1" (5.68m x 5.21m)

Shower Room

6' 2" x 5' 6" (1.88m x 1.67m)

Stairs Leading To

Bedroom One

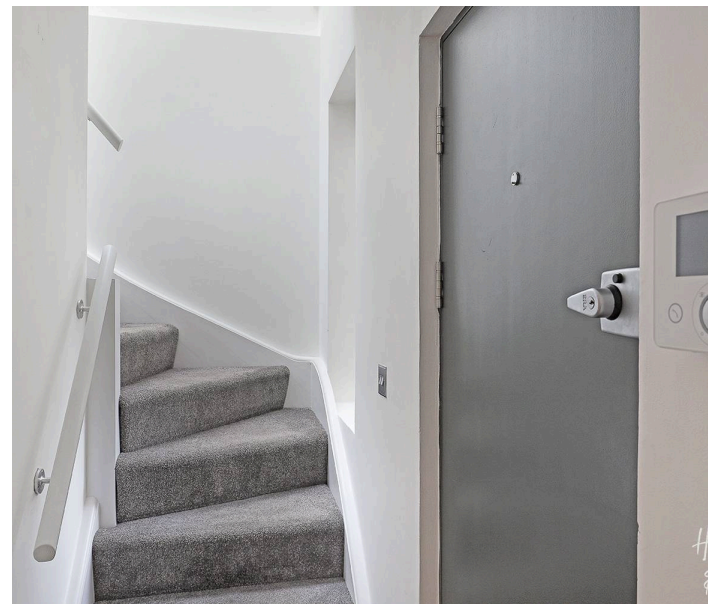
17' 7" x 9' 6" (5.35m x 2.90m)

En-Suite Bathroom

8' 6" x 5' 8" (2.60m x 1.73m)

Bedroom Two

9' 5" x 7' 7" (2.87m x 2.32m)

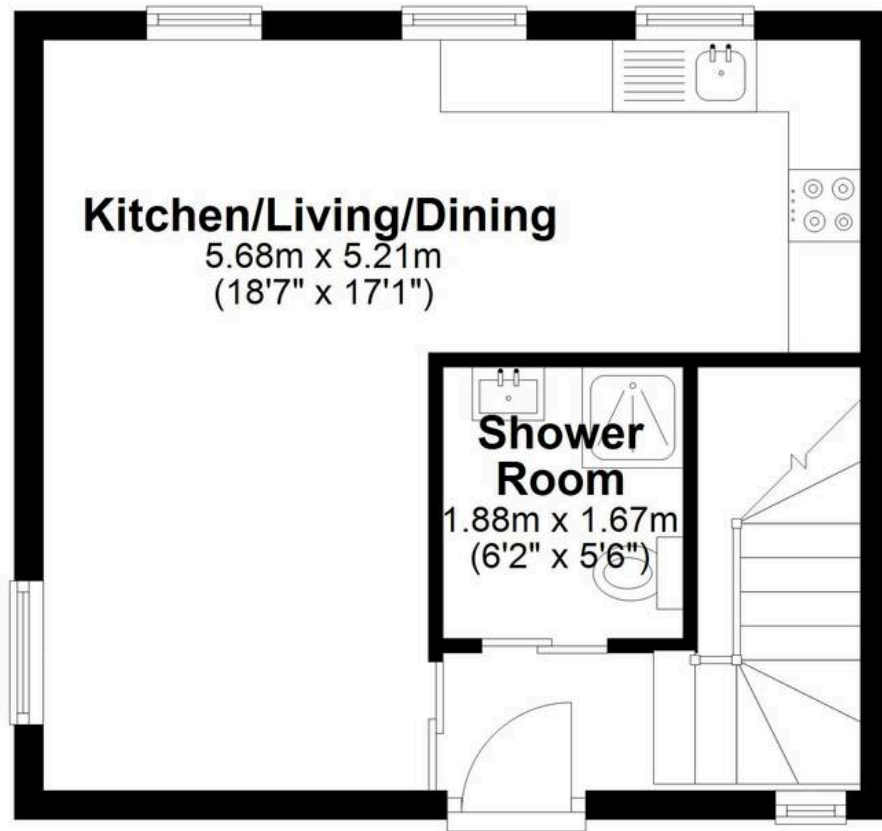






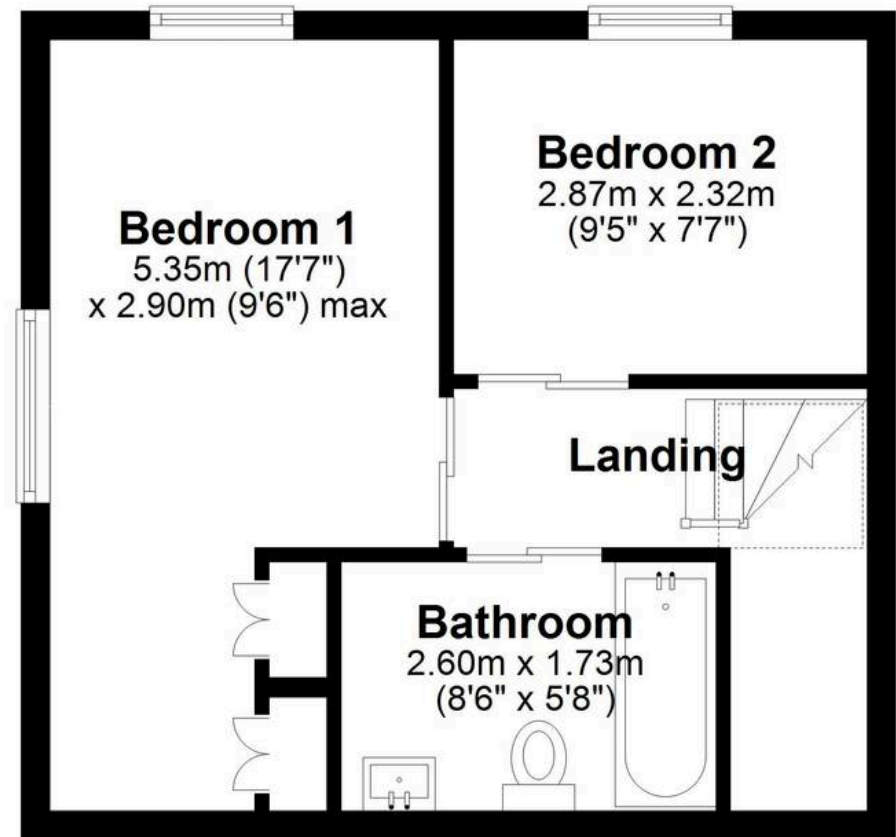
First Floor

Approx. 29.6 sq. metres (318.4 sq. feet)



First Floor

Approx. 31.1 sq. metres (335.1 sq. feet)



Total area: approx. 60.7 sq. metres (653.5 sq. feet)