

shepherds

A better home
moving experience



6 Lilbourne Drive

Hertford, SG13 7WS

Guide Price £525,000



6 Lilbourne Drive

Hertford, SG13 7WS

SOLD BY SHEPHERDS - A well presented three bedroom, two bathroom end of terrace townhouse, ideally positioned on Lilbourne Drive, just moments from the popular Foxholes area whilst enjoying a slightly quieter setting.

The property offers well balanced and versatile accommodation arranged over three floors, making it an ideal home for families or those needing flexible living space.

The ground floor comprises a study, utility room and integral garage, along with a convenient downstairs WC.

On the first floor, the layout is centred around a bright and spacious living room to the front, with a well appointed kitchen/dining room to the rear overlooking the garden.

The top floor offers three well proportioned bedrooms, including a principal bedroom with en-suite shower room, alongside a modern family bathroom serving the remaining two bedrooms.

Externally, the property benefits from a good sized rear garden, a driveway and an additional allocated parking space, providing excellent parking provision.

Lilbourne Drive is well located for access to local amenities, schooling and transport links into Hertford town centre.

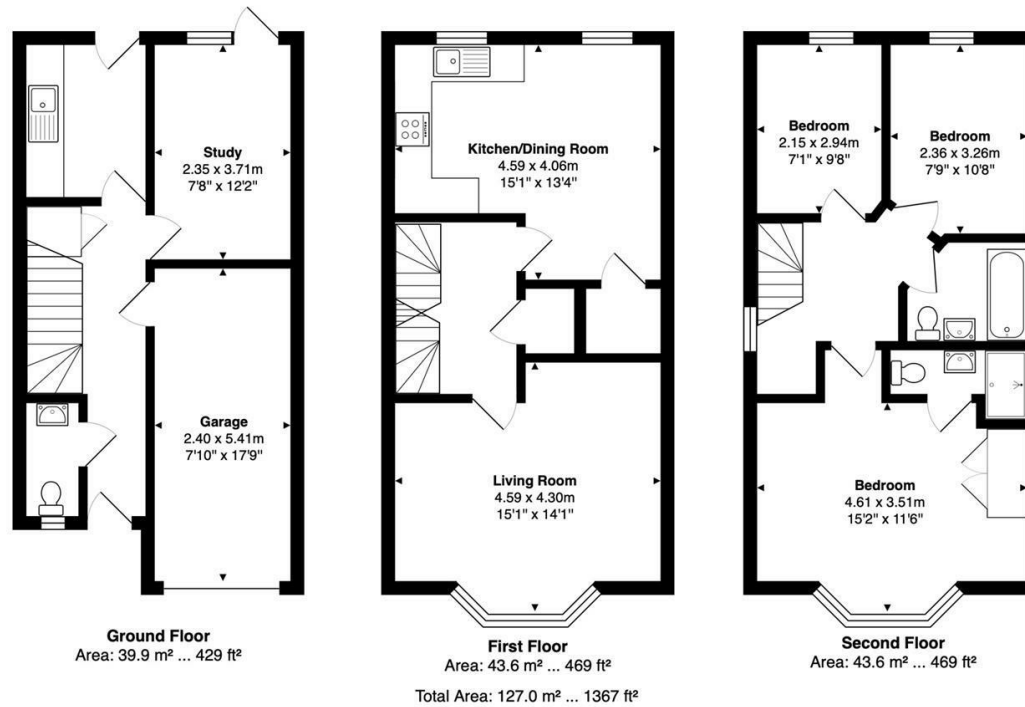




- Three bedroom, two bathroom end of terrace townhouse
- Well balanced accommodation arranged over three floors
- Bright first floor living room and rear kitchen/dining room
- Principal bedroom with en-suite shower room
- Two further bedrooms and family bathroom
- Ground floor study, utility room, garage and downstairs WC
- Good sized rear garden
- Driveway plus additional allocated parking space



Floor Plan

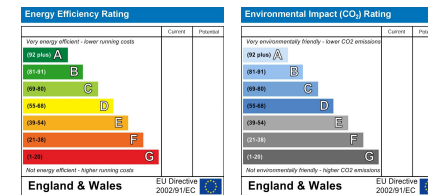


FOR ILLUSTRATIVE PURPOSES ONLY: NOT TO SCALE
 Whilst every attempt has been made to ensure the accuracy of the floor plan shown, all measurements, positioning, fixtures, features, fittings and any other data shown are an approximate interpretation for illustrative purposes only and are not to scale. No responsibility is taken for any error, omission, miss-statement or use of data shown.
 Property marketing provided by www.matthewkyle.co.uk

Viewing

Please contact Shepherds of Hertford on 01992 551955 if you wish to arrange a viewing appointment for this property or require further information.

Energy Performance Graph



These particulars, whilst believed to be accurate are set out as a general outline only for guidance and do not constitute any part of an offer or contract. Intending purchasers should not rely on them as statements of representation of fact, but must satisfy themselves by inspection or otherwise as to their accuracy. No person in this firm's employment has the authority to make or give any representation or warranty in respect of the property.

Riverside House, 6 Millbridge, Hertford, SG14 1PY
 Tel: 01992 551955 Email: enquiries@shepherdsfhertford.co.uk