



**POOLE
TOWNSEND**

Falmouth Street, Walney, Barrow-In-Furness, LA14 3JG

£250,000

3 1 1



This beautifully presented family home is tucked away in a pleasant residential setting, perfectly placed for easy access to the local beach, schools, bus routes and nearby amenities. Filled with natural light throughout, the home offers generous and welcoming living spaces ideal for modern family life. The open-plan lounge and dining area flows effortlessly through glazed doors into a spacious conservatory, creating a wonderful space for relaxing, entertaining and spending time together. The well-appointed kitchen features integrated appliances and leads to a useful utility room, as well as an enclosed lawned and decked garden, perfect for outdoor dining and enjoying sunny days. Upstairs, there are three comfortable and well-proportioned bedrooms, along with a stylish modern bathroom. To the front, off-road parking and a neatly kept lawn add to the home's warm kerb appeal and first impression.

Directions

For Satnav users enter: LA14 3JG

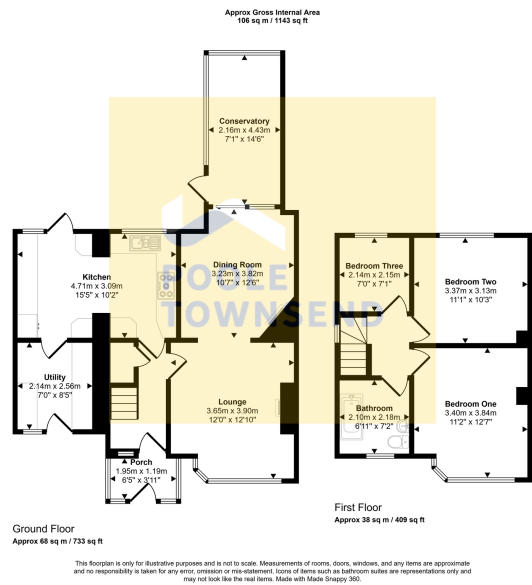
For what3words app users enter: basin.join.apron

Description

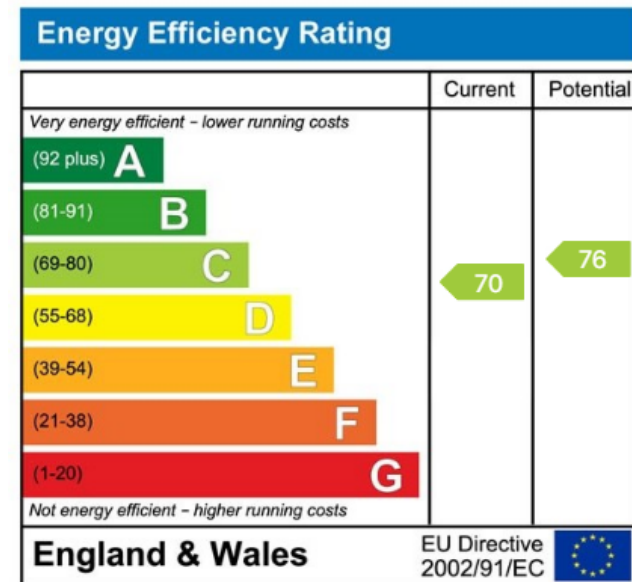
Step inside this beautifully presented family home, where generous and welcoming living spaces are filled with an abundance of natural light. The ground floor, finished with attractive Karndean flooring, offers a wonderful sense of space and comfort, perfectly suited to modern family living. To the front of the home is a cosy lounge centred around a charming multi-fuel stove, while to the rear a more formal dining area features an eye-catching fireplace, creating a lovely setting for family meals and special occasions. Glazed doors lead seamlessly from this space into a spacious conservatory, providing a versatile additional area ideal for relaxing, entertaining, or simply enjoying time together.

The well-appointed kitchen is both stylish and practical, offering a wide range of storage cupboards, wraparound worktops and integrated appliances, including a fridge, freezer, dishwasher and a double oven with grill and five-burner gas hob above. From here, there is direct access to the rear garden and a highly useful utility





- Semi Detached Property
- Open Plan Lounge And Dining
- Kitchen Featuring Integrated Appliances
- Utility Room
- Three Bedrooms
- Stylish Modern Bathroom
- Off Road Parking
- Lawned / Decked Garden
- Conservatory
- Coastal Access / Close To Schools And Amenities



Visit us at
www.pooletownsend.co.uk
enquiries@pooletownsend.co.uk

We are open
 Monday – Friday 9.00 – 5.00
 Saturday 9.00 – 1.00

Barrow 01229 811811
 Ulverston 01229 588111
 Grange 015395 33316
 Kendal 01539 734455
 Milnthorpe 015395 62044