



10 Newington Court The Firs, Bowdon, Altrincham, WA14 2UA

£400,000



10 Newington Court The Firs, Bowdon, Altrincham, WA14 2UA

£400,000

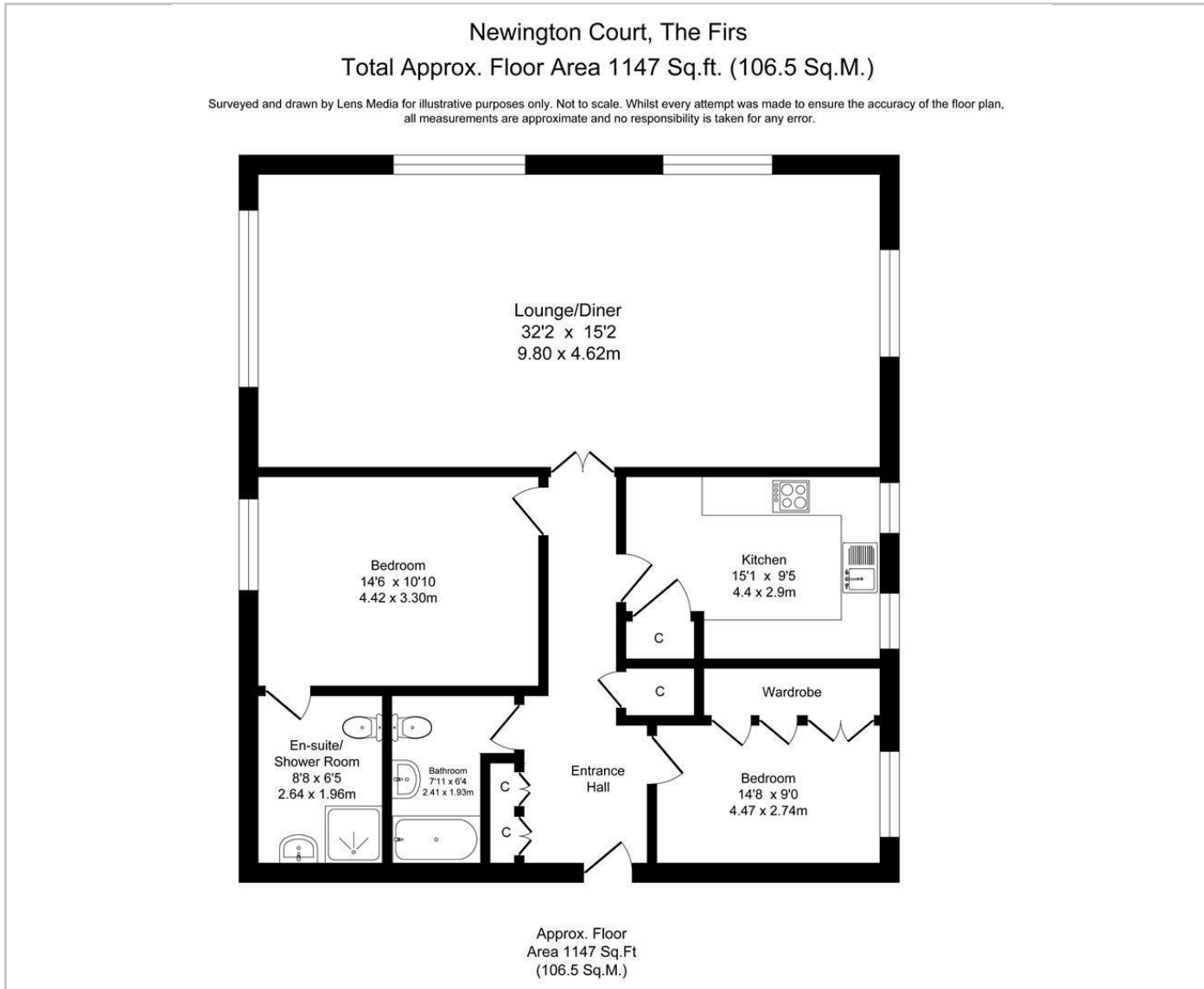
LOCATION LOCATION LOCATION. This amazing apartment is situated in Bowdon close to local amenities such as Bowdon Assembly Rooms, Stamford Arms and The Griffin. Also close to Hale and Altrincham shopping areas where there is also a train station. The apartments stand in mature gardens set back from The Firs and provides parking and a garage. The apartment is situated on the third floor accessed via a lift. The apartment comprises a hallway with storage, large triple aspect lounge/dining room with far reaching views over the rooftops and bowling green, kitchen with dining area and integrated appliances. Master bedroom with ensuite, further double bedroom with fitted furniture and stylish bathroom. The property does have parking and a garage.

Description

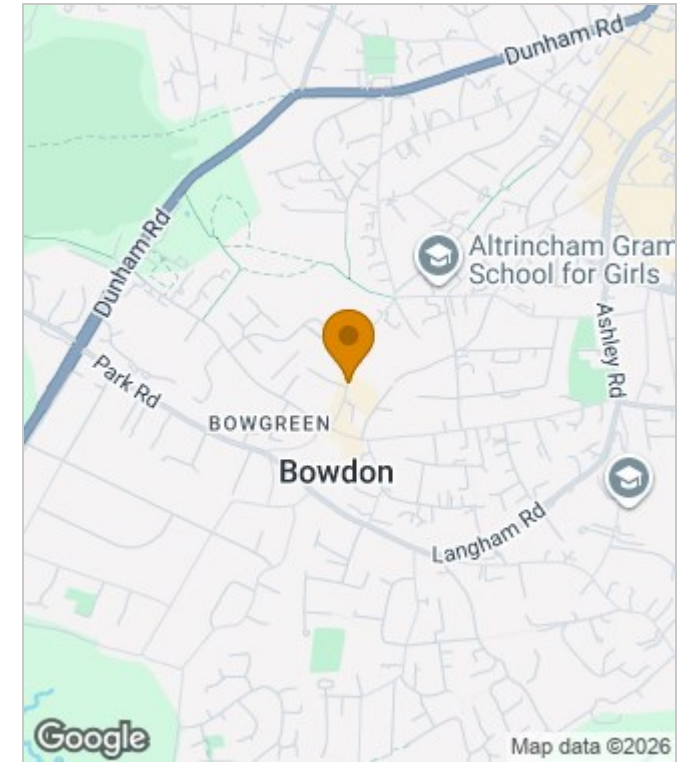


Council Tax Band: E

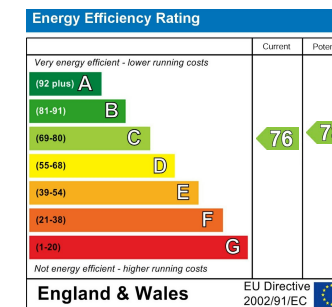
Floor Plans



Area Map



Energy Performance Graph



These particulars, whilst believed to be accurate are set out as a general outline only for guidance and do not constitute any part of an offer or contract. Intending purchasers should not rely on them as statements of representation of fact, but must satisfy themselves by inspection or otherwise as to their accuracy. No person in this firm's employment has the authority to make or give any representation or warranty in respect of the property.