



*27 Keer Avenue*



# 27 Keer Avenue Canvey Island SS8 7NP

Offers In Excess Of £307,500



This deceptively spacious two-bedroom bungalow is attractively presented and offers well-planned accommodation throughout. Conveniently located near the seafront, the property combines modern design with comfortable, practical living.

The accommodation includes an elegant and generously sized front-facing lounge, with a useful utility room positioned to the side. A conservatory/lean-to, accessed from both the lounge and inner hall, provides a versatile additional space. There are two well-proportioned bedrooms, a modern shower room, and a stylish fitted kitchen complete with oven and hob.

Externally, the bungalow benefits from parking to the front and a small garage. A really lovely home, ideal for those seeking a well-presented bungalow in a convenient location.



## Porch

Double-glazed entrance door into the porch, further door connecting to the lounge

## Lounge

18'4 x 12'9 (5.59m x 3.89m)

A good-sized lounge with a double-glazed window to the front elevation, flat plastered ceiling with inset spotlights, radiator, doors connecting to a lean-to/conservatory, door to the side to the utility room, and a further door connecting to an inner hall.

## Inner Hall

Connects to the remainder of the bedrooms, the kitchen, the shower room, and the lean-to/conservatory.

## Kitchen

8'3 x 6'10 (2.51m x 2.08m)

Double-glazed window to the side elevation, range of gloss units and drawers at base level to three walls with work surfaces over, inset hob, inset stainless steel, tiling to splashbacks, matching units at eye level, eye level cooker plus extractor.

### Utility Room

7'4 x 6' (2.24m x 1.83m)

Off the lounge and double-glazed window to the rear elevation, units with space and plumbing facilities for a washing machine, plus work surfaces and an inset stainless steel sink.

### Shower Room

Double-glazed window to the side elevation, tiling to walls and floors in ceramics, a corner shower cubicle, a vanity unit, and a low-level wc.

### Bedroom One

10'2 x 9'11 (3.10m x 3.02m)

Double-glazed window to front elevation, radiator, and access to the loft.

### Bedroom Two

12'9 x 9'10 (3.89m x 3.00m)

Double-glazed window to the side elevation, radiator, coving to textured ceiling.

### Lean-to/Conservatory

7'4 x 6' (2.24m x 1.83m)

Double-glazed sliding patio doors opening into the lounge, further doors connect to the garden, double-glazed window to the side elevation

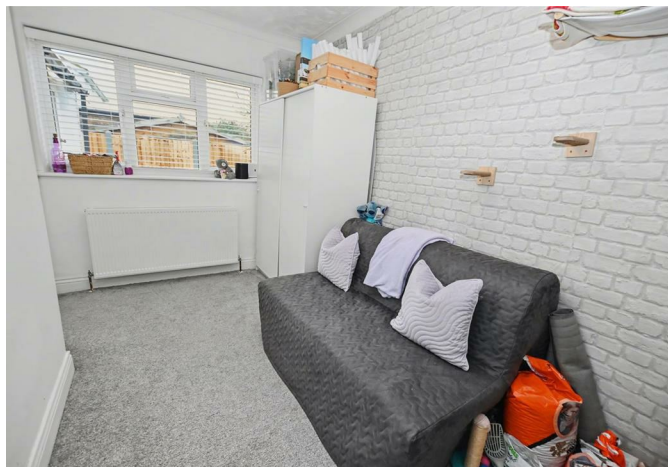
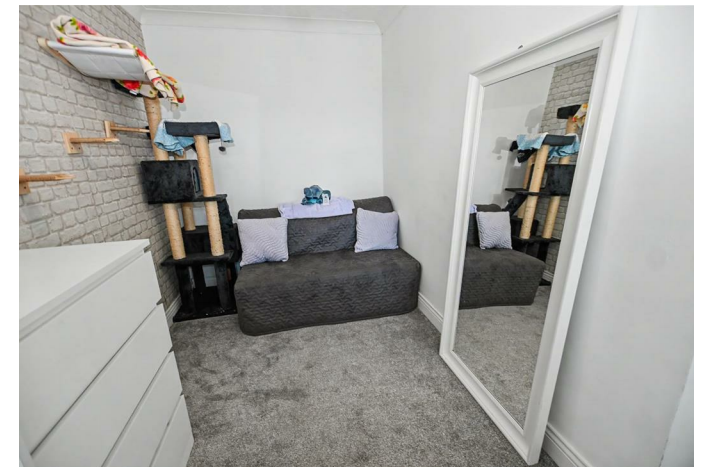
### Exterior

#### Rear Garden

Average in size, lawned and patio area, fenced to boundaries, wide side access to front

#### Front Garden

Off street parking



## GROUND FLOOR



Whilst every attempt has been made to ensure the accuracy of the floorplan contained here, measurements of doors, windows, rooms and any other items are approximate and no responsibility is taken for any error, omission or mis-statement. This plan is for illustrative purposes only and should be used as such by any prospective purchaser. The services, systems and appliances shown have not been tested and no guarantee as to their operability or efficiency can be given.  
Made with Metropix ©2020

**Misrepresentation Act 1967:** These details are prepared as a general guide only, and should not be relied upon as a basis to enter a legal contract or commit expenditure. And any interested party should rely solely on their own Surveyor, Solicitor/Conveyancer or other professionals before committing themselves to any expenditure or other legal commitments. If any interested party wishes to rely upon any information from the Agent, then a request should be made and specific written confirmation can be provided. The Agent will not be responsible for any verbal statement made by the Agent or any member of Staff, as only a specific written confirmation can be provided. The Agent will not be responsible for any loss other than what specific written confirmation has been requested.

**Property Misdescription Act 1991** The Agent has not tested any apparatus, equipment, fixture, fittings or services and so does not verify they are in working order, fit for purpose, or within ownership of the sellers, therefore the buyer must assume the information is incorrect. Neither has the Agent checked the legal documentation to verify legal status of the property. A buyer must assume the information is incorrect until it has been verified by their own Solicitors/Conveyancers. Nothing concerning the type of construction or the condition of the structure is to be implied from the photograph or plans for the property. Photographs of the interior of the property are given purely to give an indication of décor/style etc.. and does not imply that any furniture/fittings etc., are included. A fixtures & fittings list will be provided by the Solicitors/Conveyancers in due course. The sales particulars may change in the course of time and any interested party is advised to make a final inspection of the property prior to exchange of contracts



**Tel No: 01268 699 599 | Fax: 01268 699 080 | Email: [rp@richardpoyntz.com](mailto:rp@richardpoyntz.com)**  
**Registered Office: Richard Poyntz & Company, 11 Knightswick Road, Canvey Island SS8 9PA**

Partners: Richard P. Poyntz F.N.A.E.A., James R. Poyntz M.N.A.E.A., Anna L. Poyntz & Sara Poyntz • V.A.T No: 731 4287 45  
Richard Poyntz & Co (Partnership) is an introducer appointed representative of Stonebridge Mortgage Solutions Ltd for mortgage and insurance introductions.  
Stonebridge Mortgage Solutions Ltd is authorised and regulated by the Financial Conduct Authority.

