



## GROUP 6

31 Draycott Avenue | | LONDON | SW3 3BS

£2,243 Per month

[https://www.rightmove.co.uk/properties/172717796#/?channel=STU\\_LET](https://www.rightmove.co.uk/properties/172717796#/?channel=STU_LET)

**ESON 2**  
REAL ESTATE

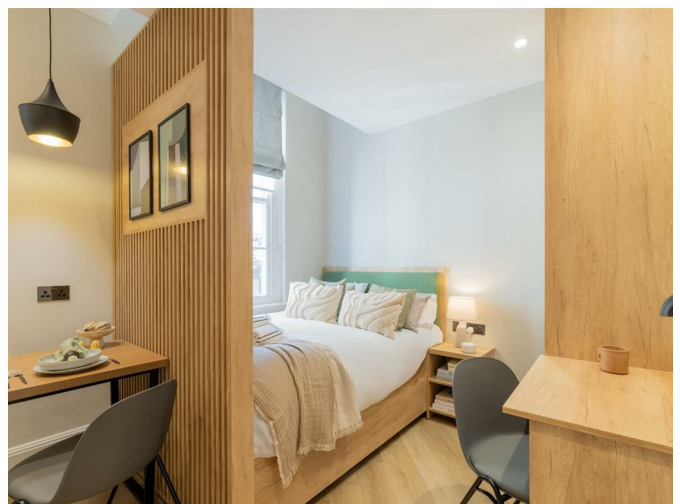
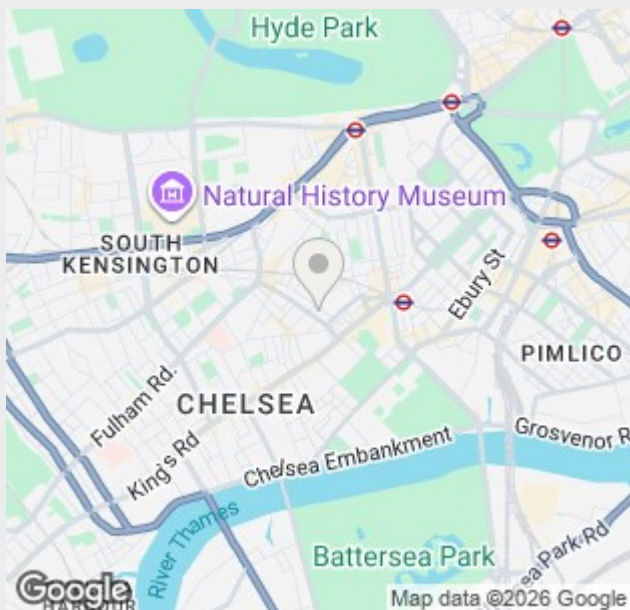
## Key features

- Open-Plan Living
- High-End Kitchen
- Luxurious Bathroom
- Smart Design
- On-site Gym
- Workspace Facilities
- 24/7 Security

## Summary

A newly renovated studio apartment in Chelsea SW3 with a smart space-saving layout, modern kitchen, walk-in shower, and dedicated dining and study areas. The apartment benefits from excellent natural light and built-in storage. Residents enjoy 24-hour gym access, co-working space, secure entry, and CCTV, moments from shops, cafés, and transport.

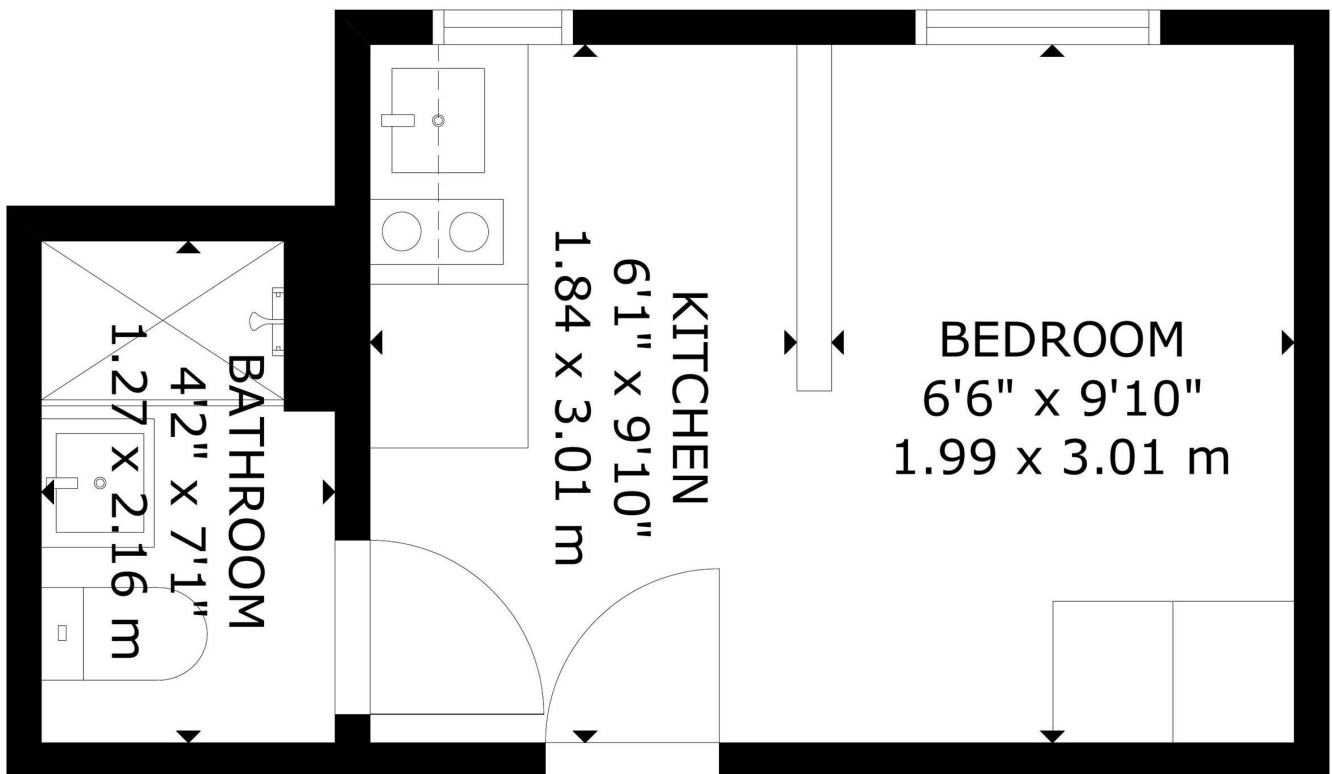
## Location



**ESON 2**  
REAL ESTATE

A beautifully refurbished, design-led studio set within an elegant period building in the heart of Chelsea, a stroll away from sought after Salone square SW3.

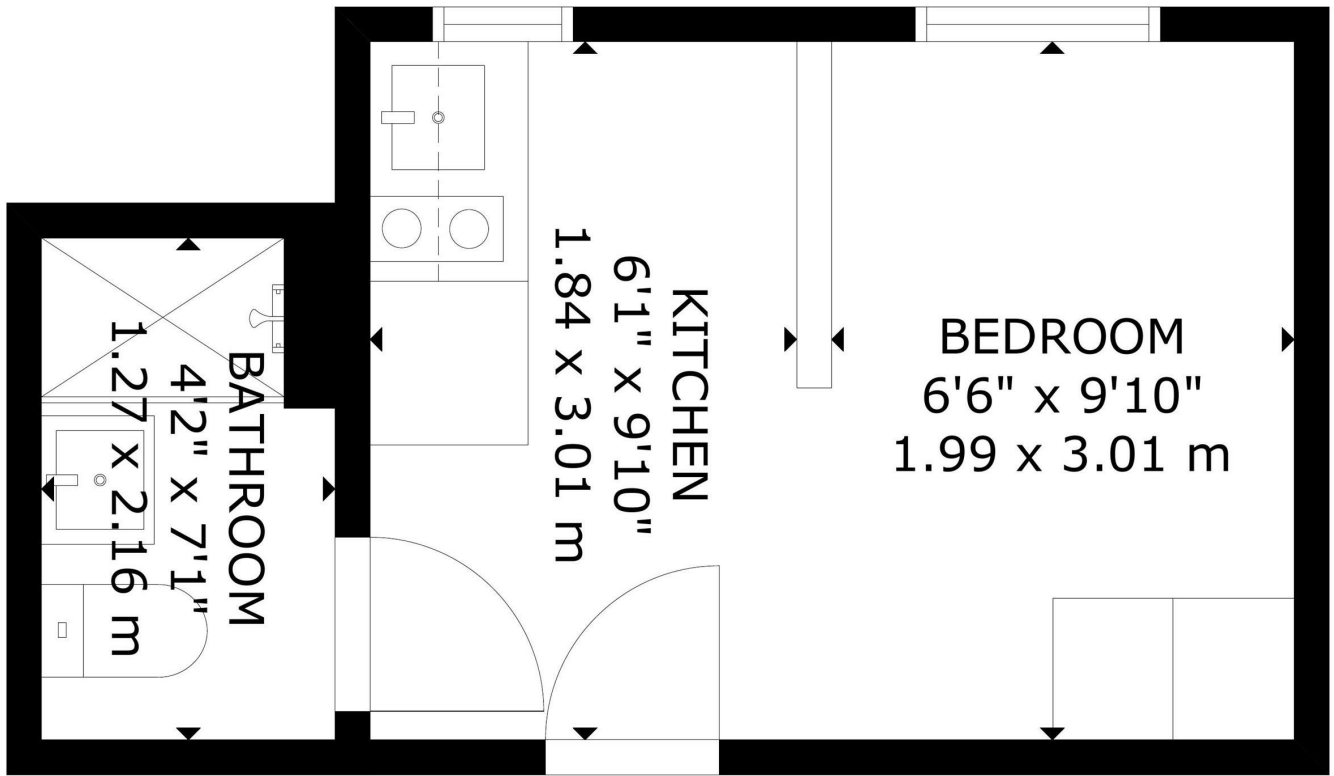
Live right in the mix, Pavilion Road, King's Road and Sloane Street are all moments away, putting London's best cafés, restaurants and shopping on your doorstep. Sloane Square, South Kensington and Knightsbridge are all within easy walking distance, so getting across London is effortless.



GROSS INTERNAL AREA  
TOTAL: 15 m<sup>2</sup>/162 sq ft  
SECOND FLOOR: 15 m<sup>2</sup>/162 sq ft  
SIZE AND DIMENSIONS ARE APPROXIMATE, ACTUAL MAY VARY

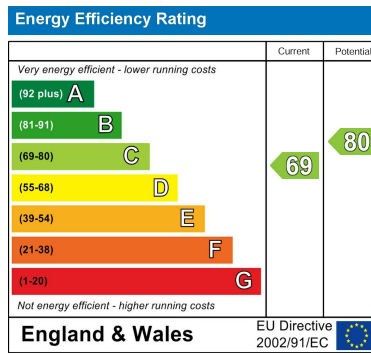
SECOND FLOOR

Floor plans



GROSS INTERNAL AREA  
 TOTAL: 15 m<sup>2</sup>/162 sq ft  
 SECOND FLOOR: 15 m<sup>2</sup>/162 sq ft  
 SIZE AND DIMENSIONS ARE APPROXIMATE, ACTUAL MAY VARY

SECOND FLOOR



Council Tax Band    EPC Rating C



301 Michelin House 81 Fulham road  
 London  
 Greater London  
 SW3 6RD  
 07920 257649  
 fayeel@eson2.co.uk  
 www.eson2.co.uk