



Petal Court, Worsley, M28

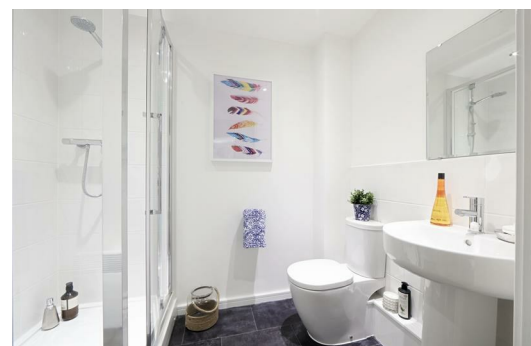
£885 Per Month

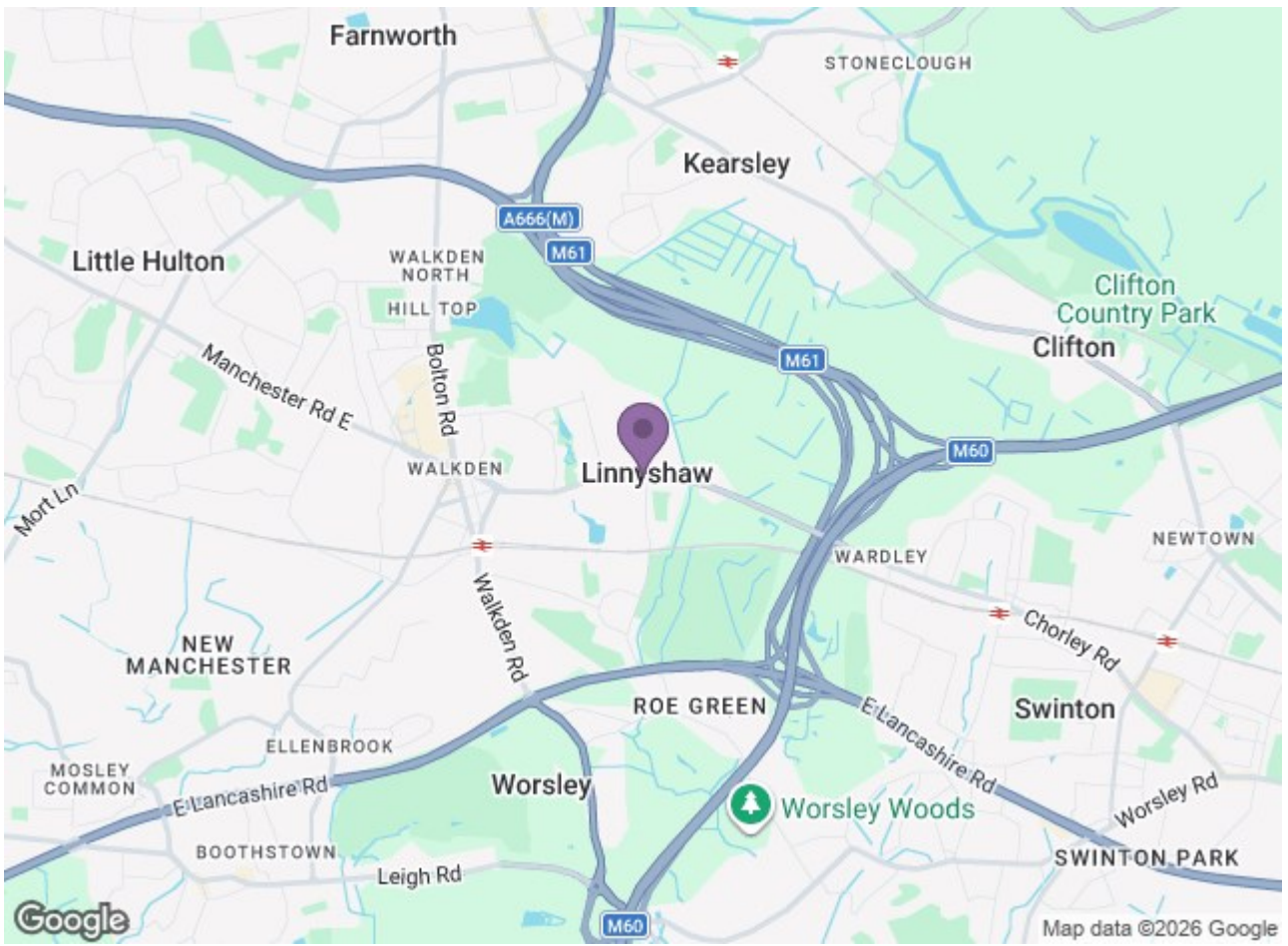
Welcome to Heyfields, located in Walkden, Heyfields is an impressive new development of 66 family homes and 72 apartments, 7 miles from Manchester city centre. Set in a picturesque location and within easy reach of the city centre, this development is ideal for both growing families and young professional couples.

Feast your eyes on our Roosevelt apartments. Perfect for singles or a couple, they feature a contemporary open plan kitchen, living and dining area, a beautiful double bedroom with fitted wardrobe, and a sizeable bathroom.

Energy efficient, these apartments have quality flooring and blinds throughout. Secure as they are comfortable, you also benefit from feature fitted alarm systems and secure-by-design windows and doors.

Available Now
Deposit: £1020
Council Tax Band: A
Unfurnished





Energy Efficiency Rating		Environmental Impact (CO ₂) Rating	
Current	Target	Current	Target
Energy A	Energy B	Energy A	Energy B
Energy B	Energy C	Energy B	Energy C
Energy C	Energy D	Energy C	Energy D
Energy D	Energy E	Energy D	Energy E
Energy E	Energy F	Energy E	Energy F
Energy F	Energy G	Energy F	Energy G
Energy G	Energy H	Energy G	Energy H
Energy H	Energy I	Energy H	Energy I

Energy Efficiency Rating: Current **B**, Target **B**. Score: **76** / **76**.
 Environmental Impact (CO₂) Rating: Current **B**, Target **B**.