



**2 Brennan Place, 2 Regent Street, Long Eaton, Nottingham, NG10 1JX**  
**£750 PCM**

- 1 Bathroom
- 1 Bedroom
- Patio
- Part Furnished
- Long Eaton
- 1 Receptions
- No Parking Available
- Sorry, No Children
- Flat

# 2 Brennan Place, Long Eaton NG10 1JX

Ground floor flat located in the heart of Long Eaton town centre with easy access to all local amenities.

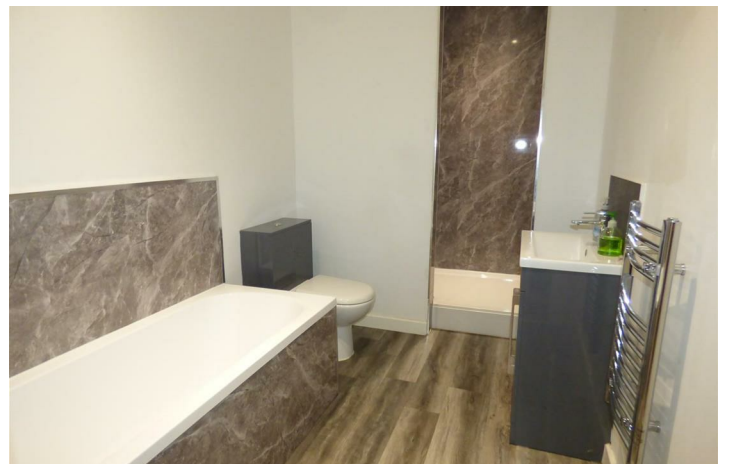
The property on offer comprises of entrance hallway with large lounge/dining area with sky light and french doors leading to your own private patio which is fully enclosed, kitchen with matching range of wall and base units, built in oven and hob with extractor hood over, washing machine and space for fridge/freezer. Double bedroom with all bedroom furniture and shower room with enclosed shower, low level WC, bath and vanity sink.

Outside is an enclosed courtyard garden and keypad gated entry system.

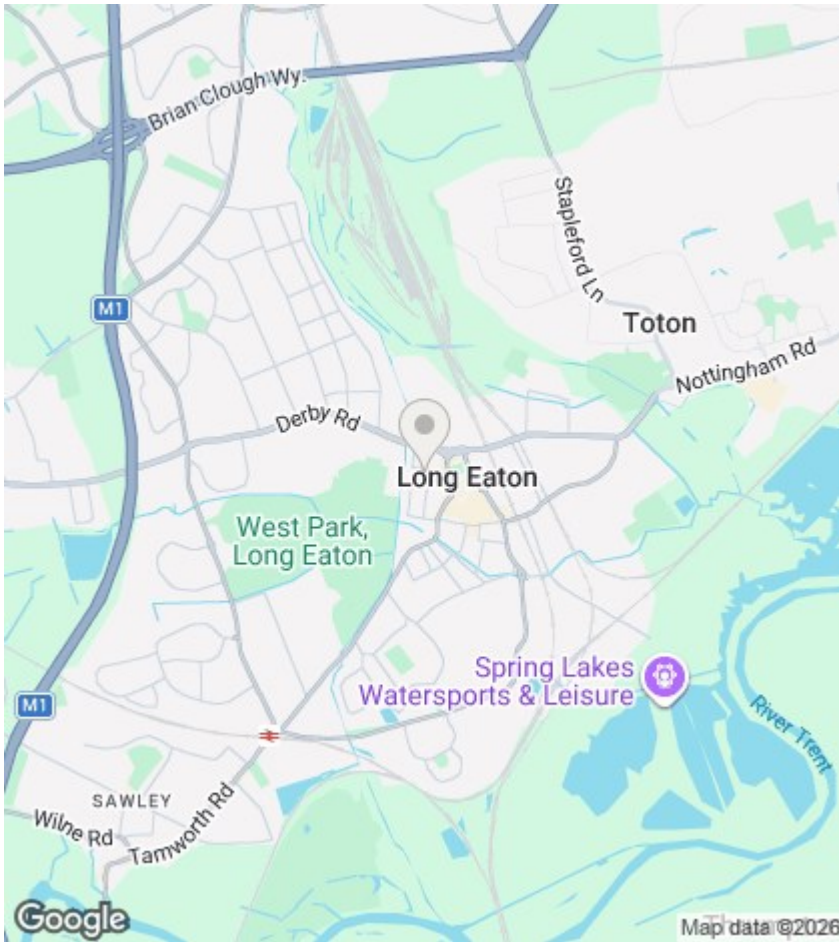
Available Early June. Accompanied Viewings



Council Tax Band: A







## Directions

## Viewings

Viewings by arrangement only. Call 0115 9466946 to make an appointment.

## EPC Rating:

Energy Efficiency Rating		Current	Potential
Very energy efficient - lower running costs			
(92 plus) <b>A</b>			
(81-91) <b>B</b>			
(69-80) <b>C</b>			
(55-68) <b>D</b>			
(39-54) <b>E</b>			
(21-38) <b>F</b>			
(1-20) <b>G</b>			
Not energy efficient - higher running costs			
<b>England &amp; Wales</b>		EU Directive 2002/91/EC	