



Flat 2, 4 Guildhall Street, Chichester, PO19 1NJ
£175,000 Leasehold

 2 Bedrooms  2 Bathrooms  1 Reception Room

Sw
Sims Williams

Key Features

- Listed Townhouse Conversion
- Heart Of Chichester City
- Adjacent To Priory Park
- First And Second Floor Flat
- Two Bedrooms
- Two Bathrooms
- Sitting Room
- Private Parking Space

EPC Rating

Current = E

Potential = D

Council Tax Band

Band = C

Tenure - Leasehold

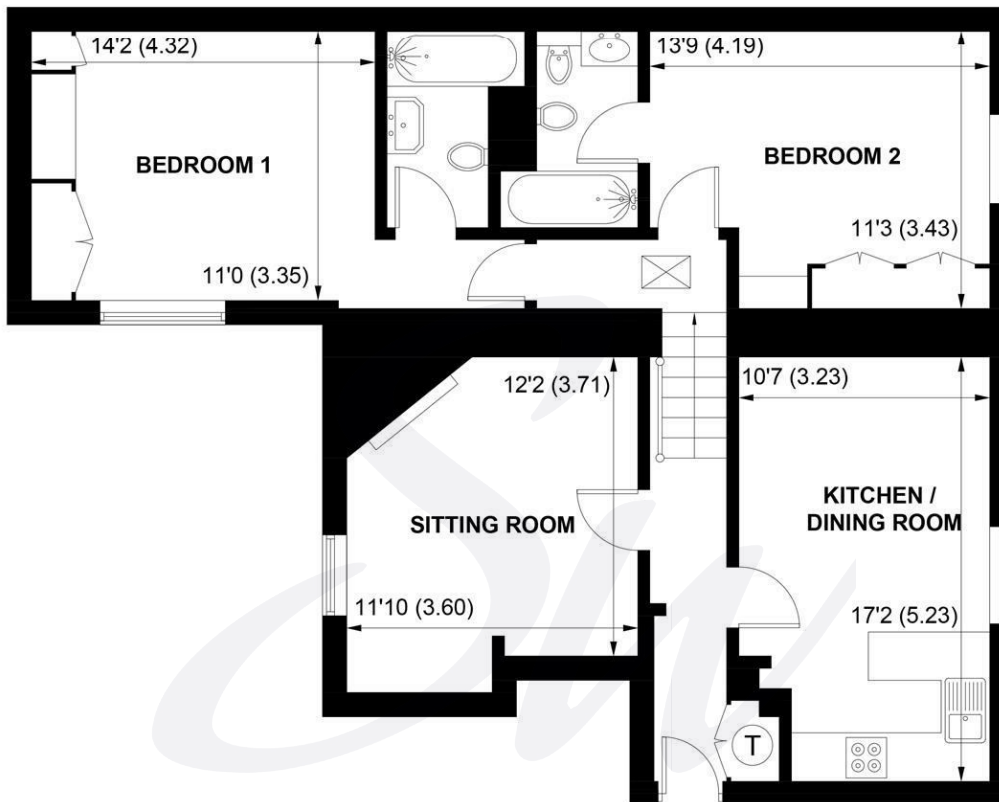
Length of Lease: 125 years

Years Remaining: 87

Ground Rent: £75.00 pa

Service Charge: £1,164.51 pa





FIRST FLOOR

APPROXIMATE GROSS INTERNAL AREA = 883 SQ FT / 82.0 SQ M

NOT TO SCALE (For illustrative purposes only as defined by RICS Code of Measuring Practice) 2026 ©

Produced for Sims Williams



simswilliams.co.uk

CHICHESTER

8-9 Southgate

Sales 01243 787868

Lettings 01243 836055

chichester@simswilliams.co.uk

WALBERTON

5 Maple Parade

Sales 01243 551368

Lettings 01243 836055

walberton@simswilliams.co.uk

ARUNDEL

8a High Street

Sales 01903 885678

Lettings 01903 881133

arundel@simswilliams.co.uk

BOGNOR REGIS

46 High Street

Sales 01243 862626

Lettings 01243 836055

bognor-regis@simswilliams.co.uk

Viewing Strictly by arrangement via the vendor's agent Sims Williams 01243 787868. These particulars are believed to be correct but their accuracy is not guaranteed and they do not form part of any contract.