



# PM ESTATES

Property Sales & Lettings



## Swallow Court

Bishops Stortford, Hertfordshire, CM23 3BA

Guide Price **£190,000**

# Swallow Court

Bishops Stortford, Hertfordshire, CM23 3BA

## Overview

- Ground Floor Apartment
- Modern Interior Design
- One Double Bedroom
- Open-Plan Living Area
- Fully Fitted Kitchen
- Integrated Appliances
- Allocated Parking
- Town Centre Location
- Walking Distance to Rail Station
- Energy Rating: C
- Council Tax Band: B



## Description

This spacious one-bedroom ground floor apartment is situated within the popular John Dyde Close Development of Bishops Stortford to sales market.

The main feature within the property is the large, open plan living area, which benefits from a fully fitted kitchen housing integrated appliances and Juliet balcony styled doors which overlook the Communal Gardens.

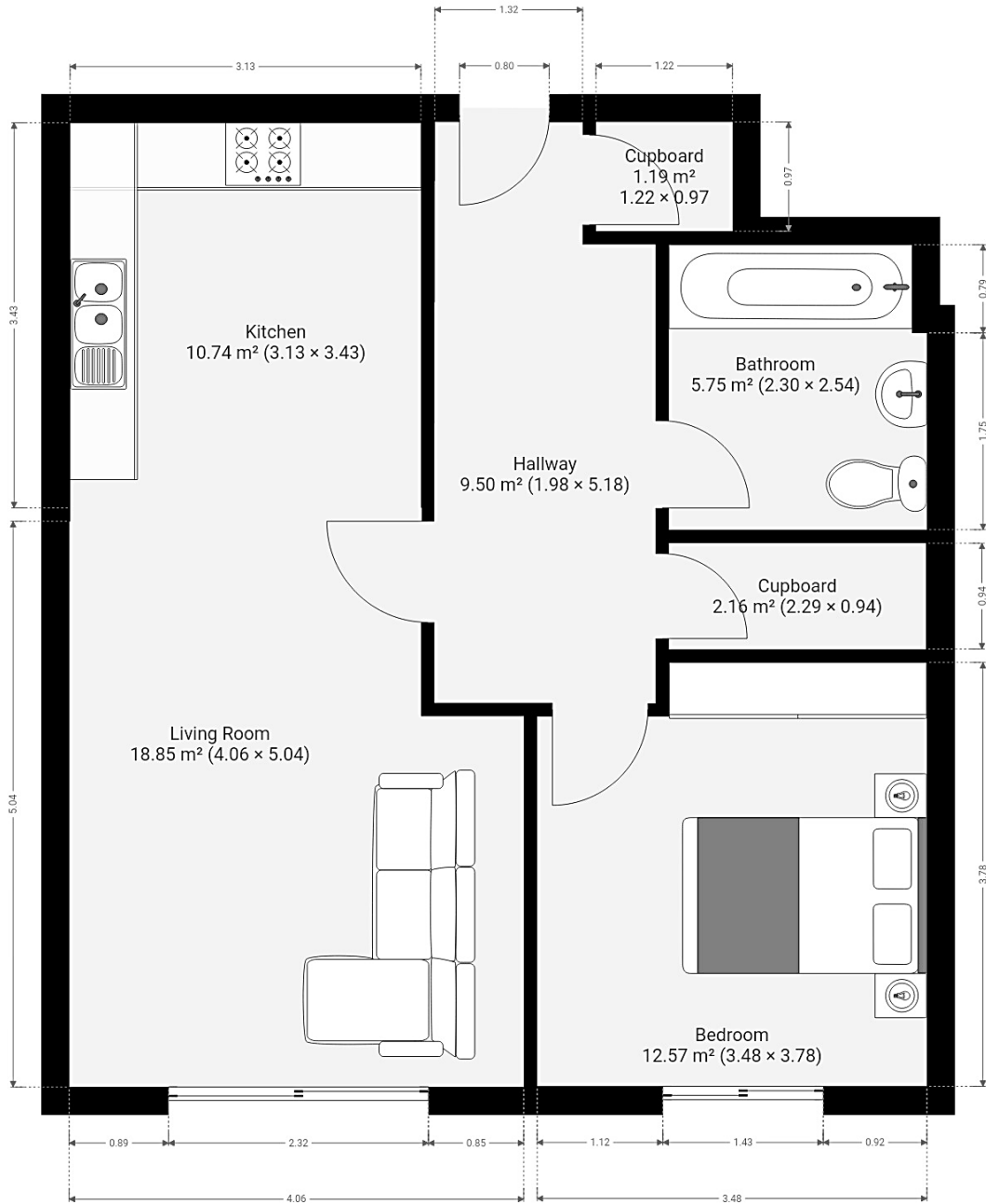
In addition, this apartment has a double sized bedroom with the added benefit of a fitted two-door wardrobe. Along with a full tiled bathroom which is complete with pebble grey tiles and a custom made to measure mirror.

The property is a stone's throw from the mainline rail station which offers direct services to London Liverpool Street, Stansted Airport and Cambridge and has the luxury of one allocated parking bay along with visitors parking.



Score	Energy rating	Current	Potential
92+	A		
81-91	B		
69-80	C	78 C	80 C
55-68	D		
39-54	E		
21-38	F		
1-20	G		

# Floor Plan



7 Riverside Walk, South Street, Bishop's Stortford, Herts CM23 3AG

Tel: 01279 654646

Email: [info@pm-estates.co.uk](mailto:info@pm-estates.co.uk)

[www.pm-estates.co.uk](http://www.pm-estates.co.uk)

PM Estates wish to advise prospective purchasers that we have not checked the services or appliances. The sales particulars have been prepared as a guide only; any floor-plan or map is for illustrative purposes only. PM Estates, for themselves and for the vendors or lessors of this property whose agents they are give notice that: the particulars have been produced in good faith; do not constitute any part of a contract; no person in the employment of PM Estates has any authority to make or give any representation of warranty in relation to this property.

P820