



Shropshire Close, Market Harborough, LE16 7LE

Market Harborough

£800 pcm

Deposit: £923.07

Date First Available: 24/07/2026

“Central Convenience!”

Situated just a stones' throw from Market Harborough's historic town centre, this impressive flat is ideally situated on the top floor with a south-east facing balcony overlooking the park, two bedrooms and a modern bathroom!

Conveniently located very close to Market Harborough town centre with a variety of amenities, local shops and restaurants, schools, gyms, churches, and the train station with direct links into London St Pancras within an hour.

Entrance through the composite front door leading into the inviting entrance hall with attractive laminate flooring and access to the attic space via a hatch.

Spacious and naturally light living/dining room with views out over the neighbouring park and a fantastic south-east facing balcony offering a perfect space to sit out and enjoy the sun.

Kitchen comprising attractive laminate flooring, eye and base level high gloss fitted units, roll top work surfaces, a stainless-steel sink, an integrated Zanussi electric cooker with a four-ring gas hob and extractor over, space for a fridge/freezer and space for a washing machine.

Main bedroom benefitting from being double in size with a window overlooking the neighbouring park and a useful fitted wardrobe. The second bedroom is a generous single and offers the potential to be utilised as a study for anybody working from home.

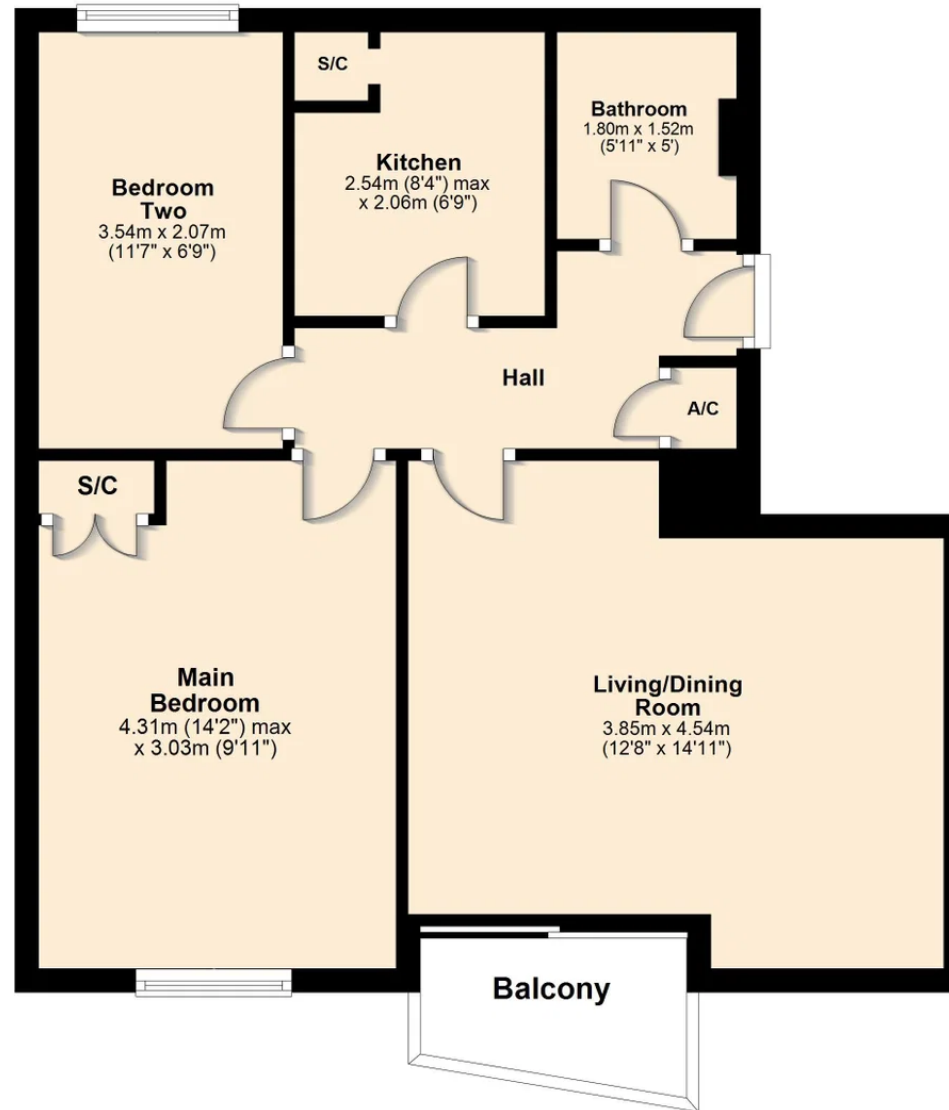
Modern and stylish bathroom comprising ceramic tiled flooring and walls, a heated towel rail, a low-level WC, a vanity enclosed wash hand basin and a panel enclosed bath with a Triton electric shower over.

The property is approached via the shared access road with parking spaces available on a first-come, first-served basis. An external shed located in a block is allocated to Flat 12 offering ideal storage. A secure door with an intercom system leads into the communal Entrance Hall and stairs flow up to the top floor where flat 12 is located with a storage cupboard to the left of the front door.





Top Floor



Henderson Connellan Market Harborough office 01858 410 400 | 63 High Street, Market Harborough, Leicestershire, LE16 7AF
marketharboroughsales@hendersonconnellan.co.uk | marketharboroughlettings@hendersonconnellan.co.uk



Disclaimer: These particulars do not form part of any offer or contract and should not be relied upon as statements or representations of fact. Any areas, measurements of distances are approximate. The text, photographs and plans are for guidance only and are not necessarily comprehensive.

