

The Courtyard

Maidenhead • Berkshire • SL6 4FZ

Guide Price: £720,000



coopers
est 1986

The Courtyard

Maidenhead • Berkshire • SL6 4FZ

A beautiful three bedroom Grade II listed Victorian character home, set within The Courtyard, a highly sought-after and peaceful cul-de-sac in Maidenhead. Ideally positioned, the property is within walking distance of Maidenhead town centre and the Elizabeth Line station. The home has period charm and original architectural features, complemented by exceptionally high ceilings and bright, spacious living accommodation throughout. The ground floor comprises an entrance hall with WC, useful storage space, a fitted kitchen, and a generous dining room with doors opening onto the rear garden, creating an inviting and sociable living space filled with natural light. To the first floor are three well proportioned bedrooms, including a main bedroom featuring a walk-in dressing room and en-suite shower room. The additional bedrooms are served by a family bathroom. Outside, the property benefits from a private rear garden, two allocated parking spaces, and further residents' parking. The location further enhances the appeal, with a quiet cul-de-sac setting, excellent local schools nearby, and convenient access to the M4 and M40 motorway networks, making it ideal for both families and commuters alike.

Character property

Private cul-de-sac

Boasting 1,402 sq ft of accommodation

Generous kitchen & dining room

Separate living room

Three bedrooms

En-suite & dressing room

Two allocated parking spaces

Within walking distance to Elizabeth Line

Grade II listed

These particulars are intended as a guide and must not be relied upon as statements of fact. Your attention is drawn to the Important Notice on the last page.

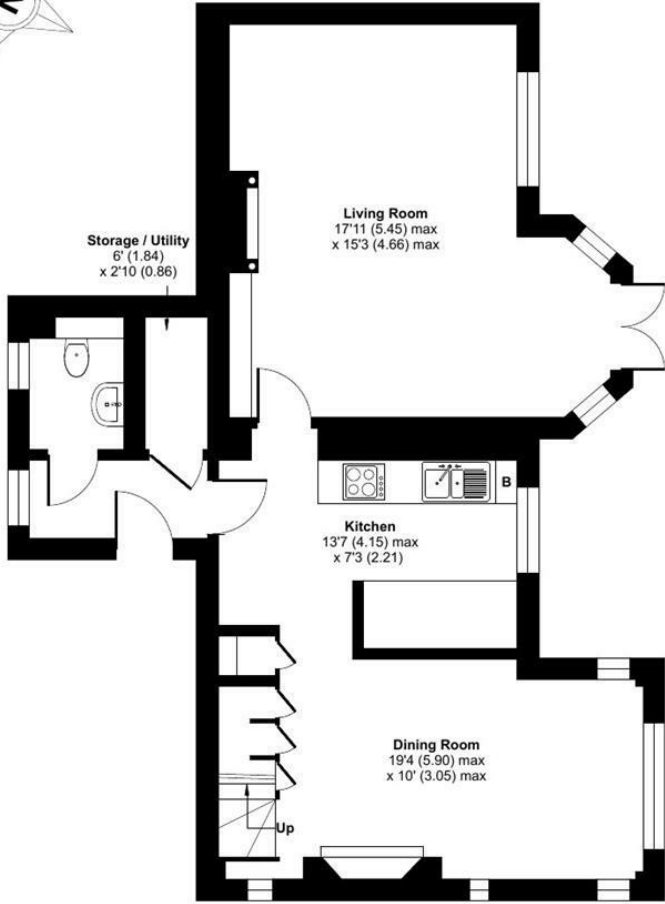




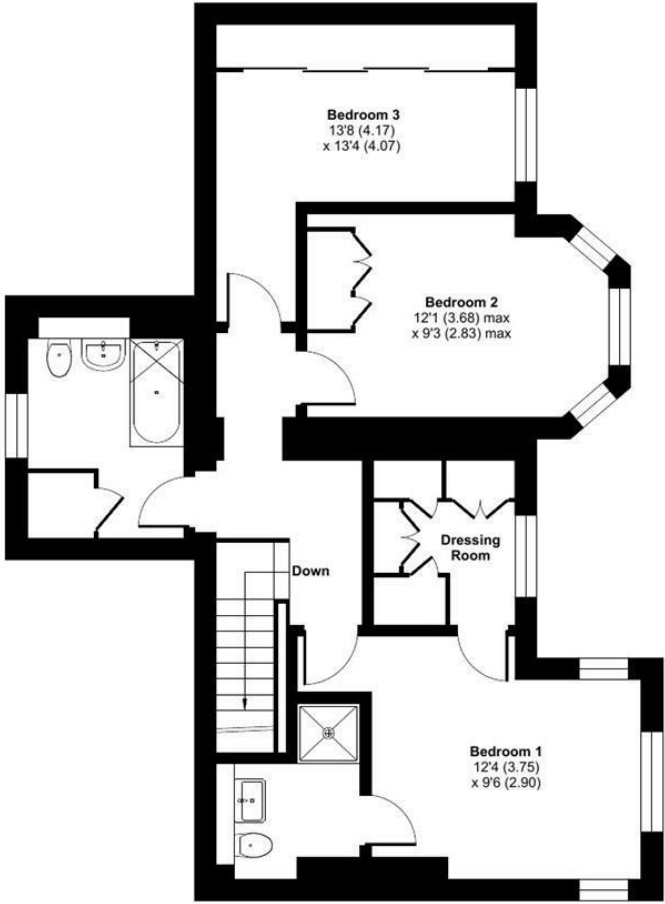
The Courtyard, Maidenhead, SL6

Approximate Area = 1436 sq ft / 133.4 sq m

For identification only - Not to scale



GROUND FLOOR



FIRST FLOOR



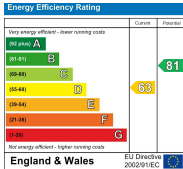
Floor plan produced in accordance with RICS Property Measurement 2nd Edition, Incorporating International Property Measurement Standards (IPMS2 Residential). © n/checom 2026. Produced for Coopers. REF: 1482238

coopers
est 1986



**42 Queen Street, Maidenhead,
SL6 1HZ**
maidenhead@coopersresidential.co.uk

CoopersResidential.co.uk



Important Notice: These particulars, whilst believed to be accurate are set out as a general outline only for guidance and do not constitute any part of an offer or contract. Intending purchasers should not rely on them as statements or representation of fact, but must satisfy themselves by inspection or otherwise has the authority to make or give any representation or warranty in respect of the property.