



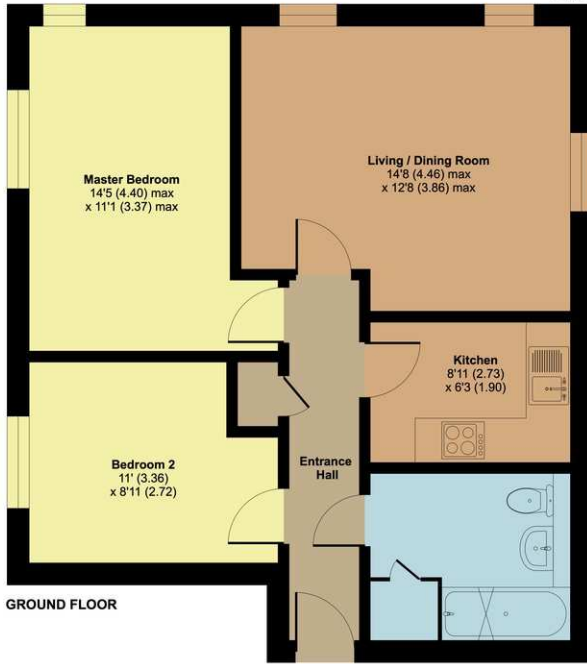
45 Winters Field, Taunton, Somerset TA1 1PY

£139,000



45 Winters Field, Taunton, TA1 1PY

Approximate Area = 617 sq ft / 57.3 sq m
For identification only - Not to scale



Features

- Entrance Hall
- Living / Dining Room with dual aspect
- Kitchen with fitted hob & oven, washer/dryer and fridge/freezer
- Master Bedroom
- Bedroom 2
- Bathroom with white suite & shower over bath
- Allocated parking space
- Double glazing
- Night storage heating
- Lease term 999 years from 2001 with 973 years remaining
- Current Ground Rent: £203 pa paid to Premier Estates
- Current Service Charge: £1,310 pa paid to FirstPort
- Council tax band B
- what3words: ///dare.scope.form

Floor plan produced in accordance with RICS Property Measurement 2nd Edition, Incorporating International Property Measurement Standards (IPMS2 Residential). © Produced for Robert Cooney. REF: 1464657

2026.

A modern second floor apartment in this conveniently located development within 0.5 mile level walk of the centre of town with 2 double bedrooms and allocated parking. No onward chain.



Viewing strictly through the selling agents:

Robert Cooney

Corporation Street, Taunton, Somerset TA1 4AW

Telephone: 01823 230230

E-mail: taunton@robertcooney.co.uk

Website: robertcooney.co.uk

**robert
cooney**

For clarification, we wish to inform prospective purchasers that: these particulars are set out as a general outline only for the guidance of intended purchasers, and do not constitute, nor constitute part of, an offer or contract; all descriptions, dimensions, references to condition and necessary permission for use and occupation, and other details, are given without responsibility and any intending purchasers should not rely on them as statements or representation of fact, but must satisfy themselves by inspection or otherwise as to the correctness of each of them; no person in the employment of Robert Cooney has any authority to make or give any representation or warranty whatever in relation to this property; we have not carried out a detailed survey nor tested the services, appliances and specific fittings.